

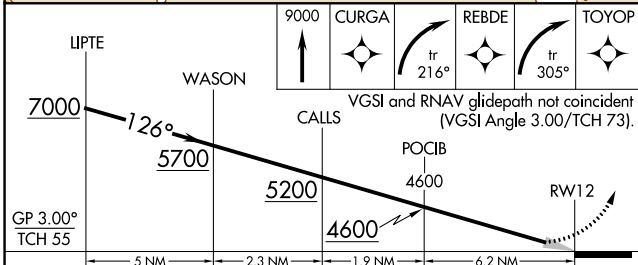
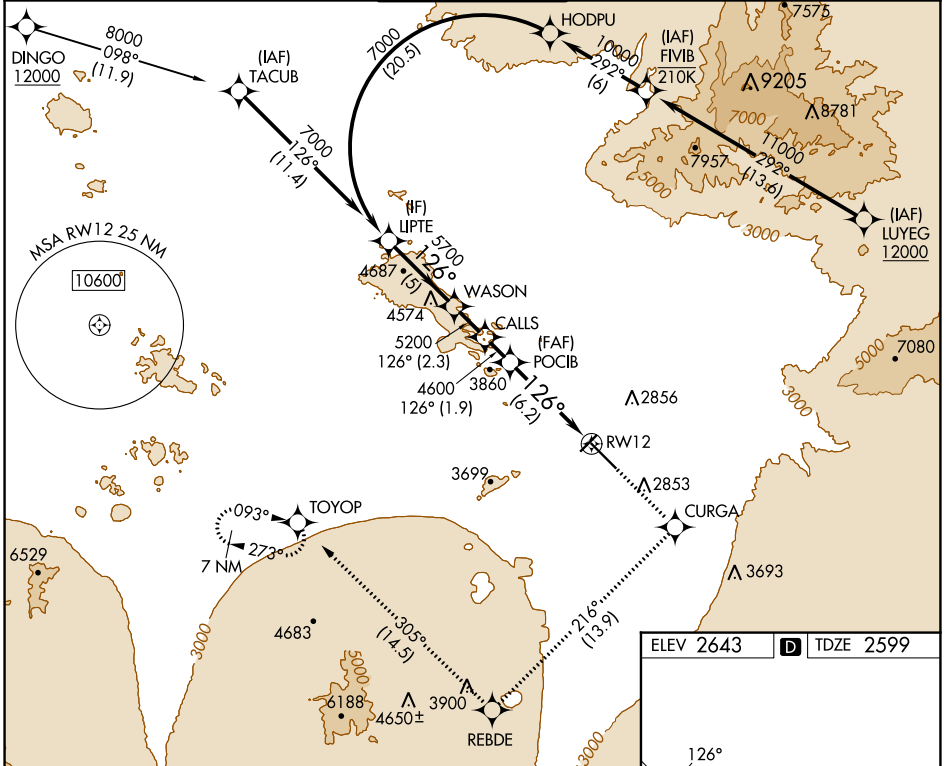
APP CRS	Rwy ldg	<b>10996</b>
<b>126°</b>	TDZE	<b>2599</b>
	Apt Elev	<b>2643</b>

# RNAV (RNP) Y RWY 12

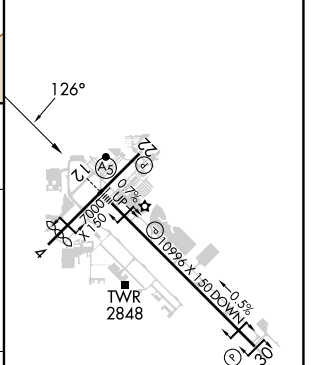
TUCSON INTL (TUS)

RNP AR APCH - GPS.	MALSR	MISSED APPROACH: Climb to 9000 direct CURGA and climbing right turn on track 216° to REBDE and climbing right turn on track 305° to TOYOP and hold, continue climb-in-hold to 9000.
▼ For uncompensated Baro-VNAV systems, procedure NA below -2°C or above 54°C. For inop ALS, increase RNP 0.30 all Cats visibility to RVR 4500.		

ATIS <b>123.8 279.65</b>	TUCSON APP CON <b>119.4 318.1</b>	TUCSON TOWER <b>118.3 257.8</b>	GND CON <b>120.025 348.6</b>	CLNC DEL <b>126.65 326.2</b>
-----------------------------	--------------------------------------	------------------------------------	---------------------------------	---------------------------------



ELEV 2643	<b>D</b> TDZE 2599
-----------	--------------------



CATEGORY	A	B	C	D
RNP 0.30 DA	2905/24 306 (300-½)			
<b>AUTHORIZATION REQUIRED</b>				

HIRL Rwy 12-30  
MIRL Rwy 4-22  
REIL Rwy 22 and 30

SW-4, 26 DEC 2024 to 23 JAN 2025

SW-4, 26 DEC 2024 to 23 JAN 2025