

VALPARAISO DESTIN FT WALTON BEACH, FLORIDA

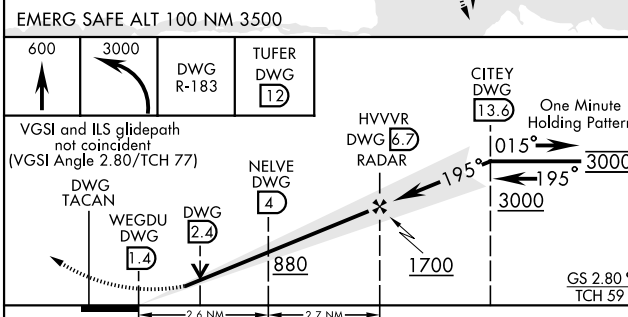
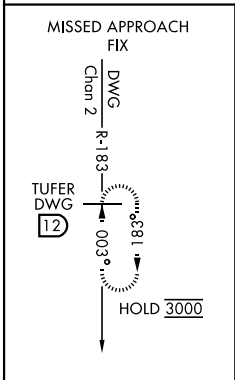
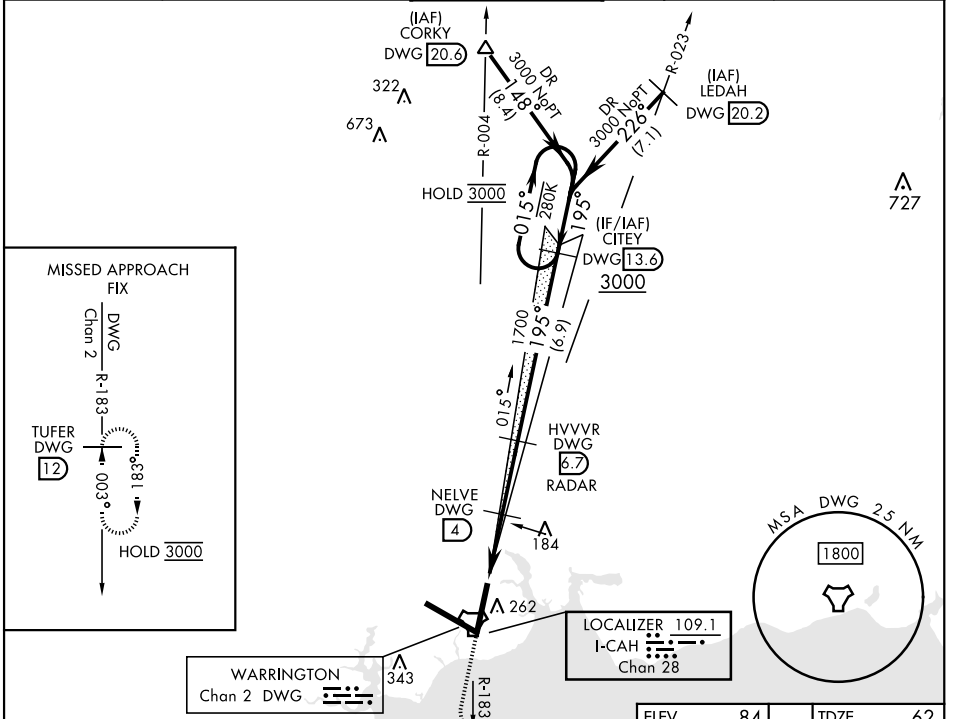
ILS or LOC Y RWY 20

LOC/DME I-CAH 109.1 Chan 28	APCH CRS 195°	Rwy Idg 10,012 TDZE 62 Arprt Elev 84
---	-------------------------	---

[USAF]

EGLIN AFB DESTIN FORT WALTON BEACH (KVPS)

DME required		ALSF-1		MISSED APPROACH: Climb to 600, then climbing left turn to 3000 on DWG TACAN R-183 to TUFER/12 DME and hold.	
* When ALS inop increase RVR to 40, vis to ¾ mile. ** When ALS inop increase RVR to 55, vis to 1 mile.		A1			
ATIS ★ 134.625 273.5	APP CON 125.1 281.45 271°-089° 132.1 360.6 090°-270°	TOWER 118.2 353.65	GND CON 121.8 335.8	CLNC DEL 127.7 377.2	



ELEV	84	TDZE	62		
† Rwy 20 apch lgt 1500' nonstandard. HIRL all rwys					
FAF to MAP 5.3 NM					
Knots	60	90	120	150	180
Min:Sec	5:18	3:32	2:39	2:07	1:46

CATEGORY	A	B	C	D	E
S-ILS 20 *	262/24		200	(200-½)	
S-LOC 20 **	440/24	378 (400-½)	440/35	378	(400-¾)
☉ CIRCLING	600-1	516 (600-1)	680-1½ 596 (600-½)	680-2 596 (600-2)	700-2¼ 616 (700-2¼)

VALPARAISO DESTIN FT WALTON BEACH, FLORIDA
Orig 16MAY24

EGLIN AFB DESTIN FORT WALTON BEACH (KVPS)
30°29'N-86°32'W

ILS or LOC Y RWY 20

SE-3, 26 DEC 2024 to 23 JAN 2025

SE-3, 26 DEC 2024 to 23 JAN 2025