

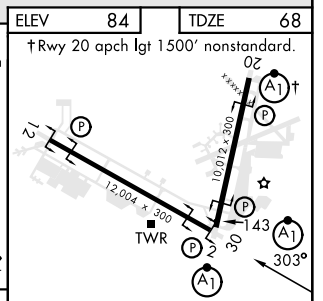
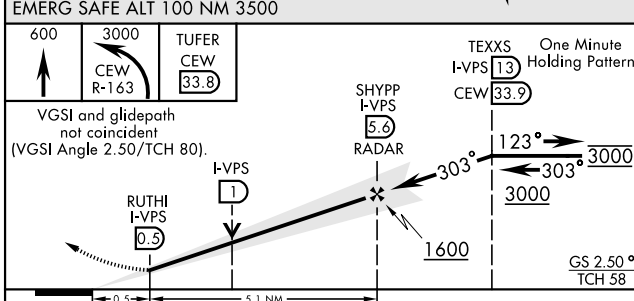
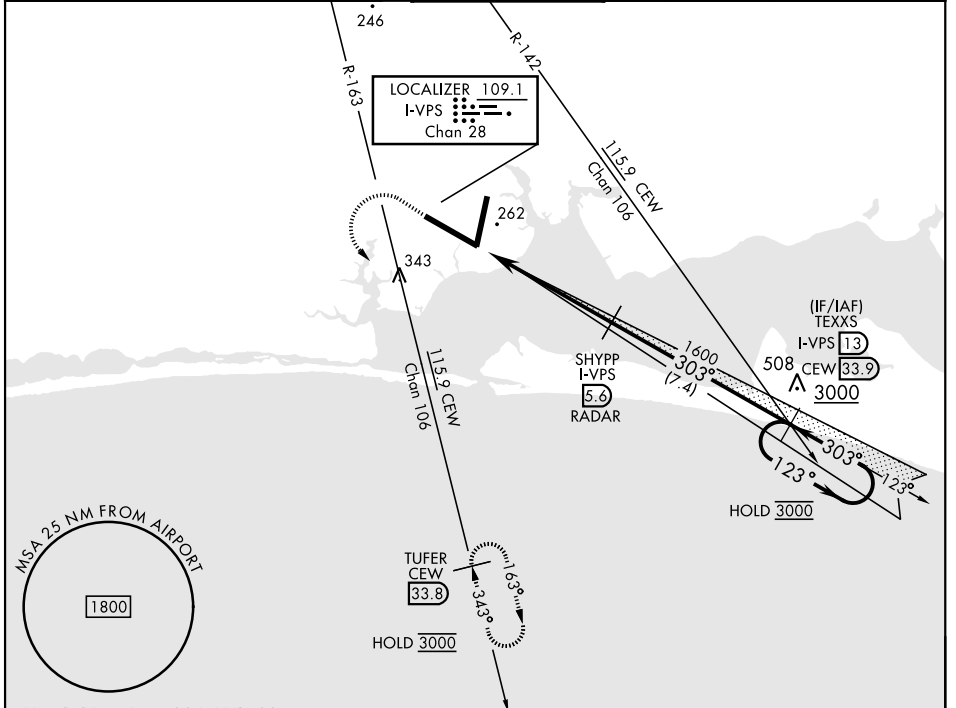
ILS or LOC Z RWY 30

LOC/DME I-VPS 109.1 Chan 28	APCH CRS 303°	Rwy Idg 12,004 TDZE 68 Arprt Elev 84
---	-------------------------	---

[USAF] EGLIN AFB DESTIN FORT WALTON BEACH(KVPS)

DME required	ALSIF-1 	MISSED APPROACH: Climb to 600, then climbing left turn to 3000 on CEW VORTAC R-163 to TUFER/33.8 DME and hold.
--------------	-------------	--

ATIS ★ 134.625 273.5	APP CON 125.1 281.45 271°-089° 132.1 360.6 090°-270°	TOWER 118.2 353.65	GND CON 121.8 335.8	CLNC DEL 127.7 377.2
--------------------------------	--	------------------------------	-------------------------------	--------------------------------



600	3000	TUFER CEW 33.8	TEXXS I-VPS 13 CEW 33.9	One Minute Holding Pattern	
VGSi and glidepath not coincident (VGSi Angle 2.50/TCH 80).					
CATEGORY	A	B	C	D	E
S-ILS 30 *	268/24		200	(200-½)	
S-LOC 30 **	400/24	332 (400-½)	400/26	332	(400-½)
CIRCLING	600-1	516 (600-1)	680-1½ 596 (600-1½)	680-2 596 (600-2)	700-2¼ 616 (700-2¼)

ELEV	84	TDZE	68
†Rwy 20 apch lgt 1500' nonstandard.			
HIRL all rwys			
FAF to MAP 5.1 NM			
Knots	60	90	120 150 180
Min:Sec	5:06	3:24	2:33 2:02 1:42

ILS or LOC Z RWY 30

SE-3, 26 DEC 2024 to 23 JAN 2025

SE-3, 26 DEC 2024 to 23 JAN 2025