

WARNER ROBINS, GEORGIA

# RNAV (GPS) RWY 33

APCH CRS	Rwy Idg	12,001
326°	TDZE	275
	Arprt Elev	294

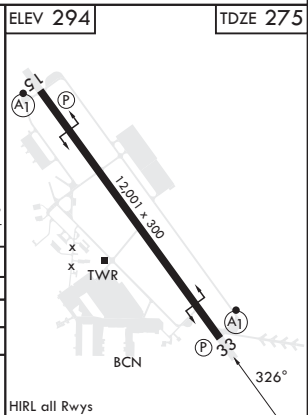
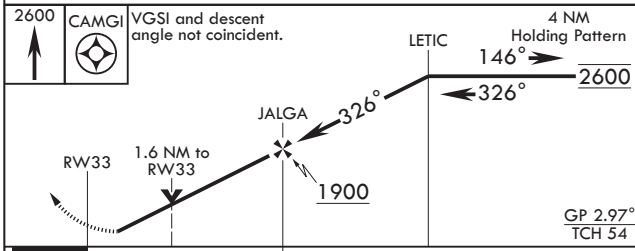
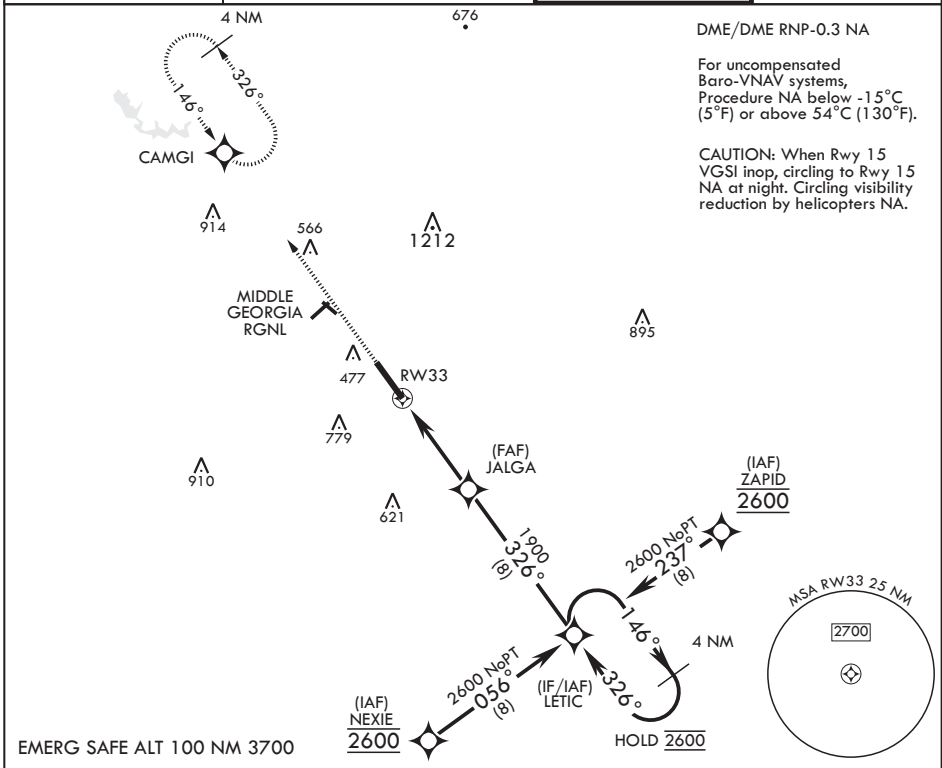
(USAF)

ROBINS AFB (KWRB)

\* When ALS inop increase CAT ABCDE vis to 1 7/8 miles.  
 \*\* When ALS inop, increase CAT AB RVR to 55, vis to 1 mile, CAT CDE vis to 1 3/8.  
 \*\*\* Circling NA SW of RWY 33-15.

ALS-1 MISSED APPROACH: Climb to 2600 direct CAMGI and hold.

ATIS 119.475 273.475	ATLANTA APP CON/DEP CON 124.2 279.6	TOWER 133.225 257.975	GND CON 121.85 275.8
-------------------------	--	--------------------------	-------------------------



CATEGORY	A	B	C	D	E
LNAV/VNAV DA*	820-1 <sup>3</sup> / <sub>8</sub>		545	(600-1 <sup>3</sup> / <sub>8</sub> )	
LNAV MDA**	760/24	485 (500-1/2)	760/50	485	(500-1)
CIRCLING***	820-1 <sup>3</sup> / <sub>8</sub>	486 (600-1 <sup>3</sup> / <sub>8</sub> )	840-1 <sup>1</sup> / <sub>2</sub> 546 (600-1 <sup>1</sup> / <sub>2</sub> )	960-2 666 (700-2)	1100-2 <sup>3</sup> / <sub>4</sub> 806 (900-2 <sup>3</sup> / <sub>4</sub> )

WARNER ROBINS, GEORGIA

32°38'N - 83°36'W

ROBINS AFB (KWRB)

Amdt 5 20MAY21

# RNAV (GPS) RWY 33

SE-4, 26 DEC 2024 to 23 JAN 2025

SE-4, 26 DEC 2024 to 23 JAN 2025