

WENDOVER, UTAH

AL-445 (FAA)

24025

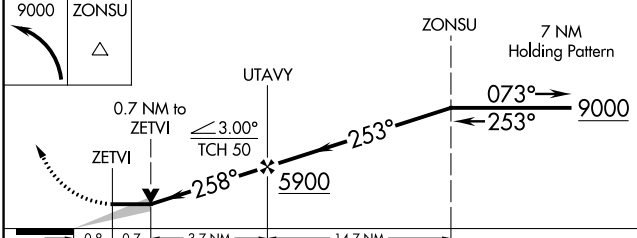
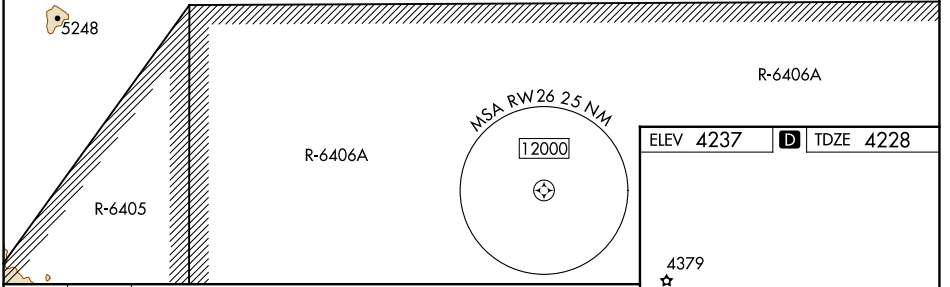
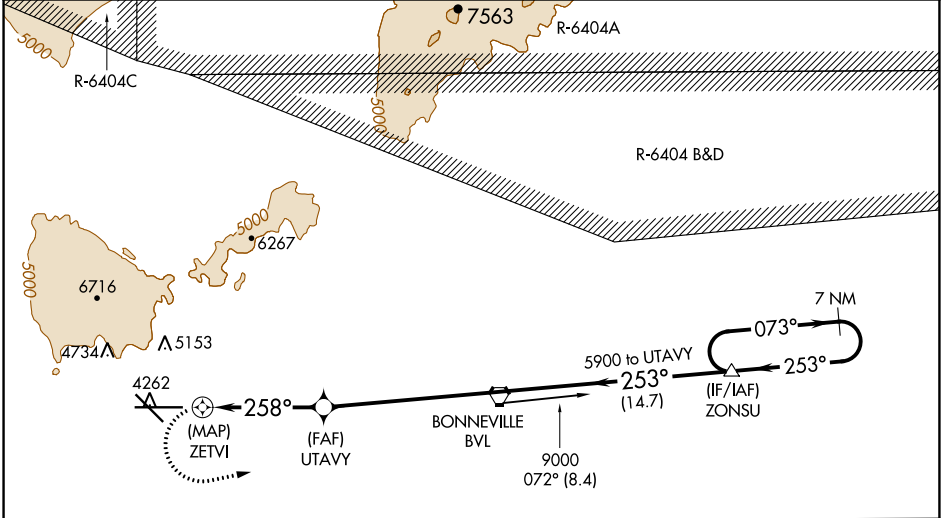
APP CRS	Rwy Idg	<b>10002</b>
<b>258°</b>	TDZE	<b>4228</b>
	Apt Elev	<b>4237</b>

# RNAV (GPS) RWY 26

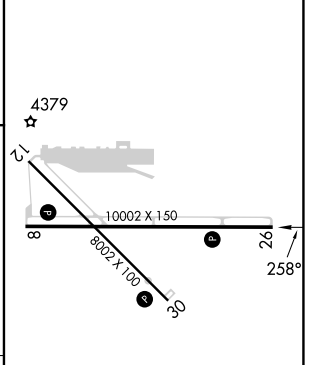
WENDOVER (ENV)

NA MISSED APPROACH: Climbing left turn to 9000 direct ZONSU and hold, continue climb-in-hold to 9000.
--

AWOS-3PT <b>120.55</b>	SALT LAKE CENTER <b>128.55 269.175</b>	UNICOM <b>122.8 (CTAF)</b>
---------------------------	---	-------------------------------



ELEV 4237	<b>D</b> TDZE 4228
-----------	--------------------



CATEGORY	A	B	C	D	E
LNVA MDA	4740-1	512 (600-1)	4740-1 <sup>3</sup> / <sub>4</sub>	512 (600-1 <sup>1</sup> / <sub>2</sub> )	
<b>C</b> CIRCLING	4740-1 <sup>1</sup> / <sub>4</sub>	503 (600-1 <sup>1</sup> / <sub>4</sub> )	4860-1 <sup>3</sup> / <sub>4</sub> 623 (700-1 <sup>3</sup> / <sub>4</sub> )	5080-2 <sup>3</sup> / <sub>4</sub> 843 (900-2 <sup>3</sup> / <sub>4</sub> )	5700-3 1463 (1500-3)

REIL Rwy 8, 12, 26 and 30 **1**  
 MIRL Rwy 8-26 and 12-30 **1**

SW-4, 26 DEC 2024 to 23 JAN 2025

SW-4, 26 DEC 2024 to 23 JAN 2025

WENDOVER, UTAH  
Amdt 1A 02JAN20

40°43'N-114°02'W

# WENDOVER (ENV)

## RNAV (GPS) RWY 26