

APP CRS	Rwy Idg	N/A
<b>078°</b>	TDZE	N/A
	Apt Elev	<b>4237</b>

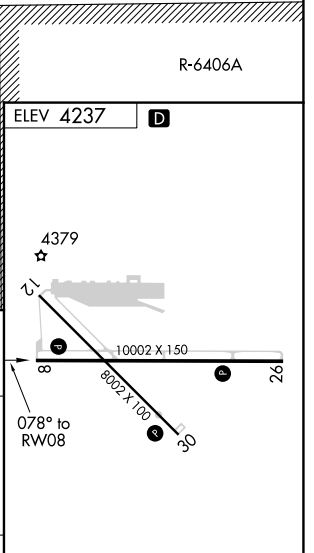
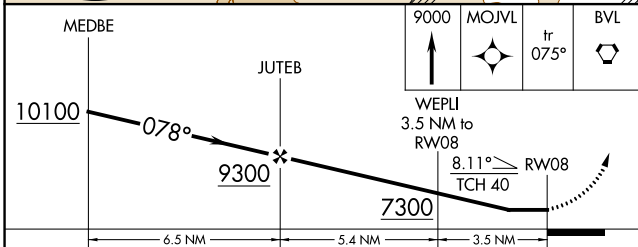
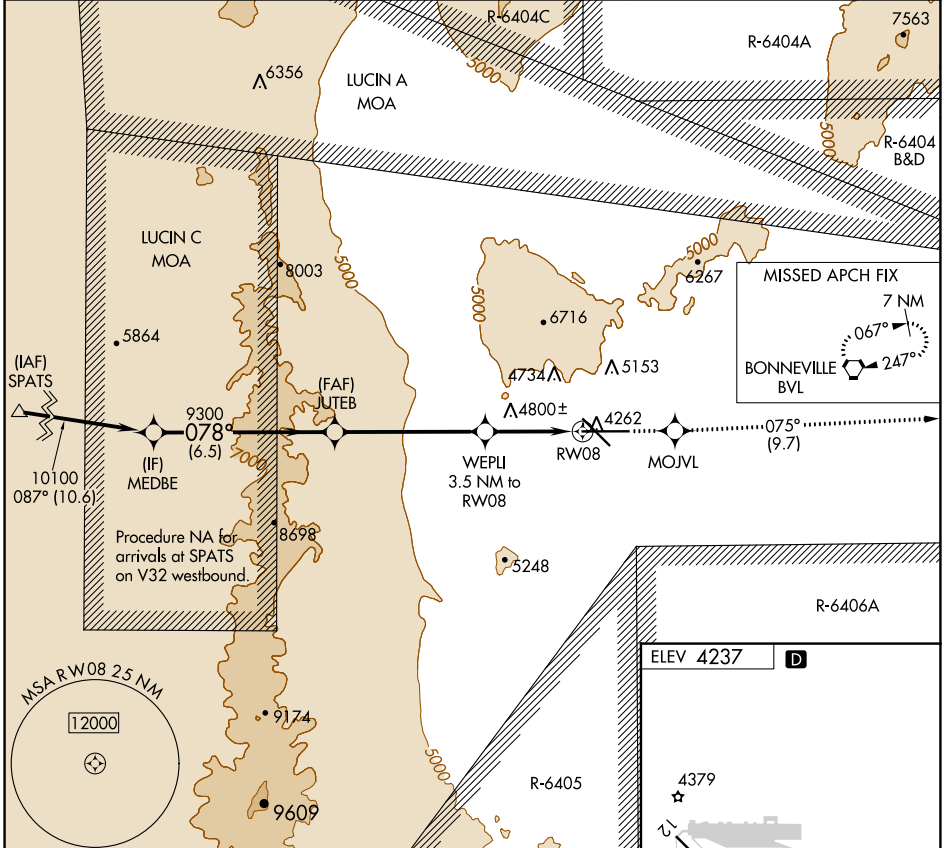
# RNAV (GPS)-C

WENDOVER (ENV)

**⚠** Circling NA north of Rwy 8-26. DME/DME RNP-0.3 NA.

**⚠** MISSED APPROACH: Climb to 9000 direct MOJVL and on track 075° to BVL VORTAC and hold, continue climb-in-hold to 9000.

AWOS-3PT <b>120.55</b>	SALT LAKE CENTER <b>128.55 269.175</b>	UNICOM <b>122.8 (CTAF)</b>
---------------------------	---	-------------------------------



CATEGORY	A	B	C	D	E
<b>CIRCLING</b>	6020-1¼ 1783 (1800-1¼)	6020-1½ 1783 (1800-1½)	6020-3	1783 (1800-3)	

REIL Rwy 8, 12, 26 and 30 **Ⓛ**  
MIRL Rwy 8-26 and 12-30 **Ⓛ**

SW-4, 26 DEC 2024 to 23 JAN 2025

SW-4, 26 DEC 2024 to 23 JAN 2025