


LOC I-BAF 111.9	APP CRS 204°	Rwy Idg 8919
		TDZE 270
		Apt Elev 270

ILS or LOC RWY 20

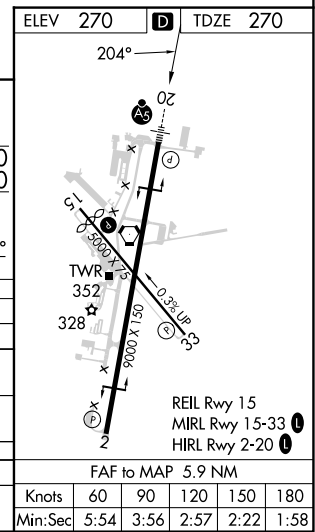
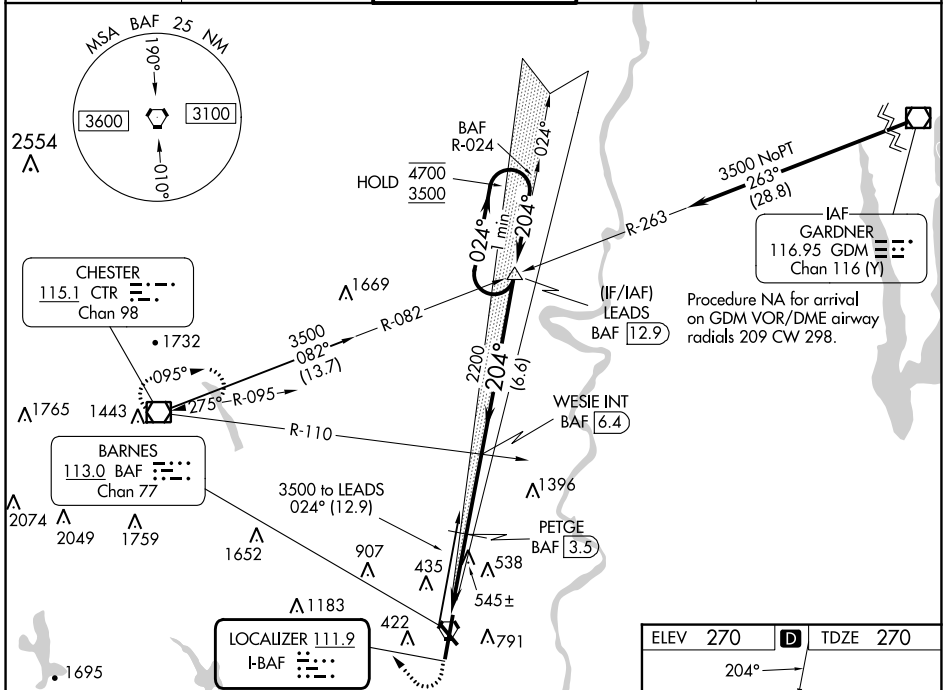
WESTFIELD-BARNES RGNL (BAF)

⚠ Circling Rwy 15 NA at night. DME from BAF VORTAC. DME use requires simultaneous reception of I-BAF and BAF DME. For inop ALS, increase S-ILS 20 Cat E visibility to RVR 4000; increase S-LOC 20 Cat E visibility to 3 SM; increase PETGE fix minimums S-LOC 20 Cat E visibility to 1 1/2 SM.

⚠ -21°C

MALSR  MISSED APPROACH: Climb to 1300 then climbing right turn to 4000 direct CTR VOR/DME and hold, continue climb-in-hold to 4000.

ATIS 127.1 263.15	BRADLEY APP CON 125.35 281.5	WESTFIELD TOWER ★ 118.9 (CTAF) 0 251.1	GND CON 121.7 289.4	CLNC DEL 121.7
-----------------------------	--	---	-------------------------------	--------------------------



1300	4000	CTR	*LOC only.	WESIE INT BAF 6.4	LEADS BAF 12.9	One Minute Holding Pattern
BAF 0.5	BAF 2	BAF 3.5	PETGE BAF 3.5	2200	204°	4700/3500
GS 3.0° TCH 50						
CATEGORY A B C D E						
S-ILS 20	520/24		250 (300-1/2)			
S-LOC 20	1260/40 990 (1000-3/4)	1260/55 990 (1000-1)	1260-2 1/2 990 (1000-2 1/2)			
C CIRCLING	1260-1 1/4 990 (1000-1 1/4)	1260-1 1/2 990 (1000-1 1/2)	1260-3 990 (1000-3)	1660-3 1390 (1400-3)		
PETGE FIX MINIMUMS (DME REQUIRED)						
S-LOC 20	800/24 530 (600-1/2)		800/55 530 (600-1)			
C CIRCLING	1160-1 1/4 890 (900-1 1/4)		1160-2 3/4 890 (900-2 3/4)		1660-3 1390 (1400-3)	
FAF to MAP 5.9 NM						
Knots 60 90 120 150 180						
Min:Sec 5:54 3:56 2:57 2:22 1:58						

NE-1, 26 DEC 2024 to 23 JAN 2025

NE-1, 26 DEC 2024 to 23 JAN 2025