

BAF VORTAC <b>113.0</b> Chan 77	APP CRS <b>025°</b>	Rwy Idg TDZE <b>264</b> Apt Elev <b>270</b>
---------------------------------------	------------------------	---

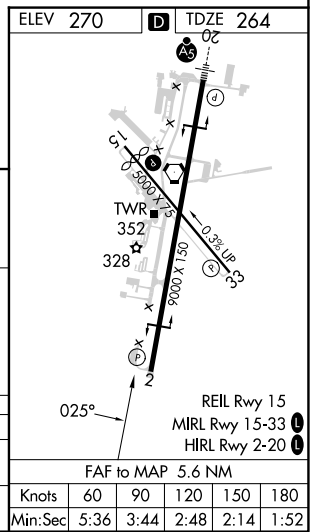
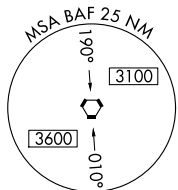
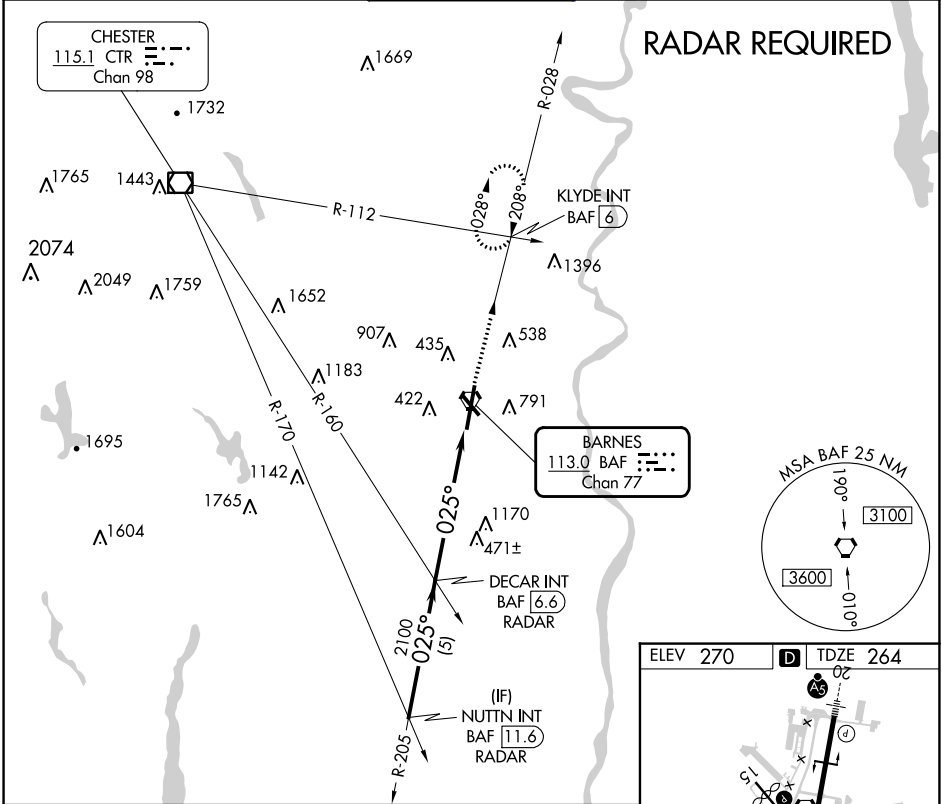
# VOR or TACAN RWY 2

WESTFIELD-BARNES RGNL (BAF)

**⚠** Night landing: Rwy 15 NA.  
**❄** -21°C Helicopter visibility reduction below ¾ SM NA.

MISSED APPROACH: Climb to 3000 via the BAF VORTAC R-028 to KLYDE INT and hold.

ATIS <b>127.1 263.15</b>	BRADLEY APP CON <b>125.35 281.5</b>	WESTFIELD TOWER* <b>118.9</b> (CTAF) <b>0 251.1</b>	GND CON <b>121.7 289.4</b>	CLNC DEL <b>121.7</b>
-----------------------------	--	--	-------------------------------	--------------------------



NUTTN INT BAF 11.6 RADAR

VGSI and descent angles not coincident (VGSI Angle 3.00/TCH 50).

3000

025°

2100

3.02° TCH 43

5.6 NM

5 NM

3000

BAF R-028

KLYDE INT

BAF 1

BAF VORTAC

CATEGORY	A	B	C	D	E
S-2	780-1	516 (600-1)	780-1½ 516 (600-1½)	780-1¾	516 (600-1¾)
CIRCLING	1160-1¼	890 (900-1¼)	1160-2¾ 890 (900-2¾)	1660-3	1390 (1400-3)

FAF to MAP 5.6 NM

Knots	60	90	120	150	180
Min:Sec	5:36	3:44	2:48	2:14	1:52

NE-1, 26 DEC 2024 to 23 JAN 2025

NE-1, 26 DEC 2024 to 23 JAN 2025