

WAAS CH 93831 W13A	APP CRS 132°	Rwy Idg TDZE Apt Elev	5003 2822 2822
----------------------------------------	------------------------	-----------------------------	-------------------------------------------

RNAV (GPS) RWY 13

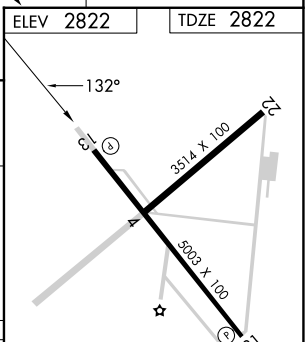
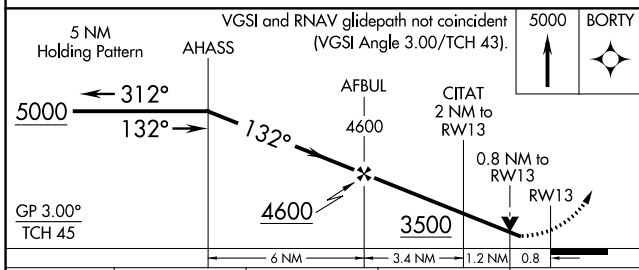
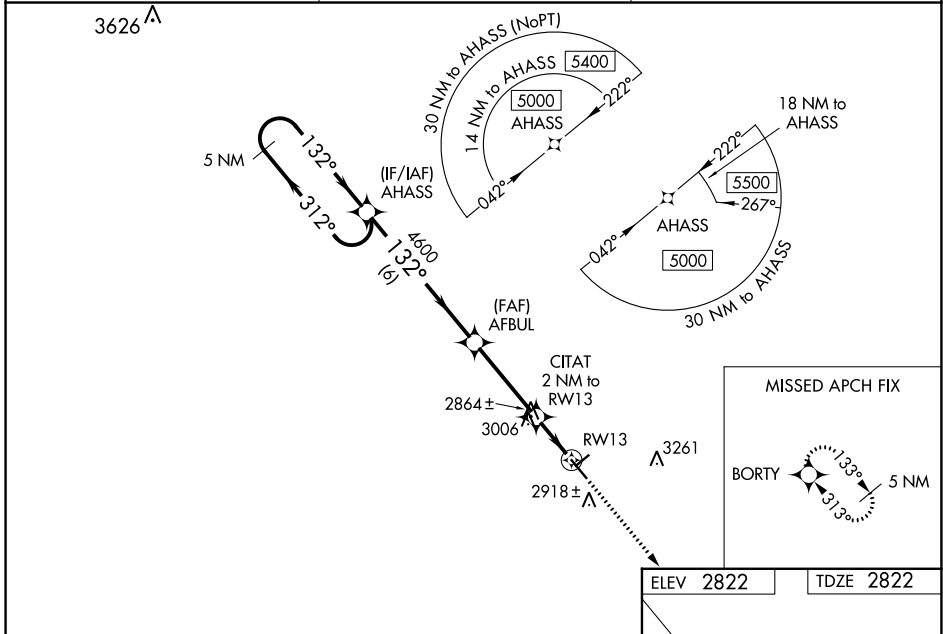
WINKLER COUNTY (INK)

RNP APCH - GPS.

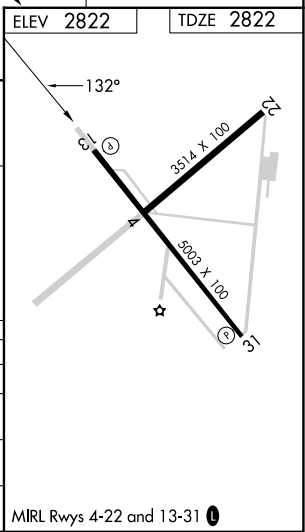
⚠ Baro-VNAV NA when using Pecos altimeter setting. For uncompensated Baro-VNAV systems, LNAV/VNAV NA below -20°C or above 54°C. VDP NA with Pecos altimeter setting. Rwy 13 helicopter visibilities reduction below 3/4 SM NA. When local altimeter setting not received, use Pecos altimeter setting: increase LPV DA to 3167 feet and all Cats visibilities 1/4 SM; increase LNAV/VNAV DA to 3167 feet and all Cats visibilities 1/4 SM; increase all MDAs 100 feet and LNAV Cat C visibility 3/8 SM and Circling Cat C visibility 1/4 SM.

MISSED APPROACH:
Climb to 5000 direct BORTY and hold.

ASOS 118.325	FORT WORTH CENTER 133.1 298.95	UNICOM 123.0 (CTAF) 0
------------------------	------------------------------------------	---------------------------------



CATEGORY	A	B	C	D
LPV DA	3072-3/4	250 (300-3/4)		NA
LNAV/VNAV DA	3072-3/4	250 (300-3/4)		NA
LNAV MDA	3320-1	498 (500-1)	3320-1 3/8 498 (500-1 3/8)	NA
CIRCLING	3320-1	498 (500-1)	3580-2 1/4 758 (800-2 1/4)	NA



SC-3, 26 DEC 2024 to 23 JAN 2025

SC-3, 26 DEC 2024 to 23 JAN 2025