

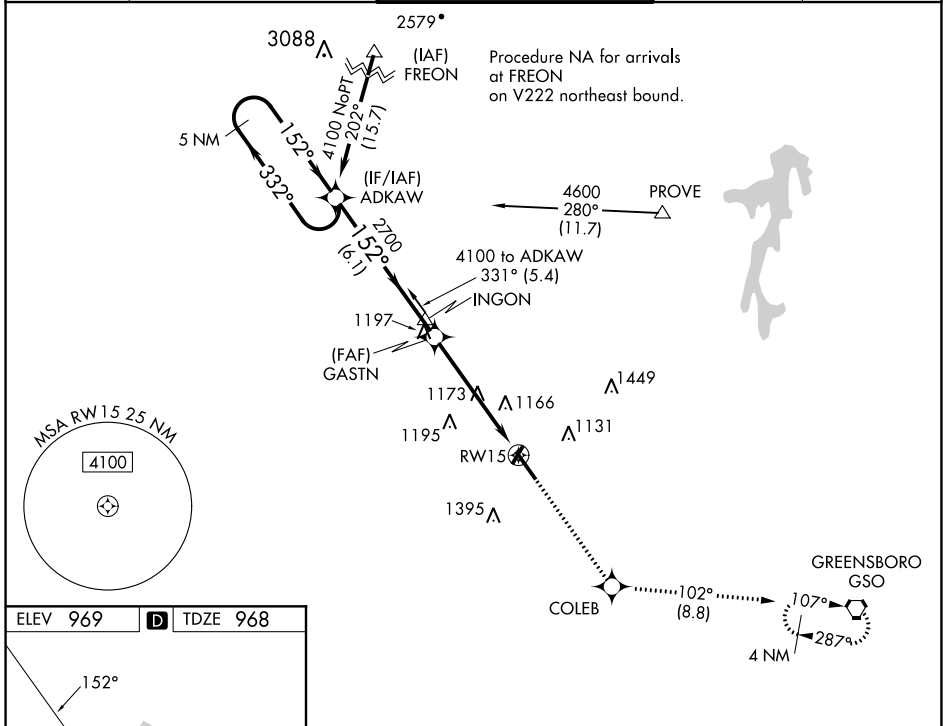
APP CRS	Rwy Idg	<b>6069</b>
<b>152°</b>	TDZE	<b>968</b>
	Apt Elev	<b>969</b>

# RNAV (GPS) RWY 15

SMITH REYNOLDS (INT)

RNP APCH.	<p>When local altimeter setting not received, use Piedmont Triad Intl altimeter setting and increase all MDA 40 feet and Circling Cats C/D visibility ¼ SM. Circling Rwy 4, 22 NA at night. Rwy 15 helicopter visibility reduction below ¾ SM NA.</p>	<p>MISSED APPROACH: Climb to 3000 direct COLEB and on track 102° to GSO VORTAC and hold.</p>
-----------	---	--

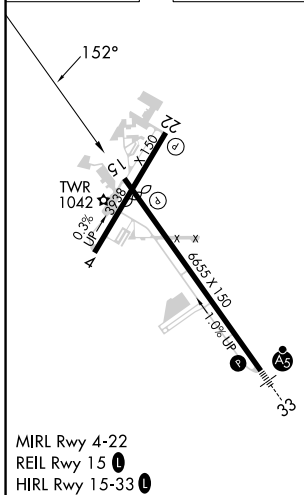
ATIS <b>121.3</b>	GREENSBORO APP CON <b>124.35 269.225</b>	WINSTON-SALEM TOWER ★ <b>123.75 (CTAF) 0 257.8</b>	GND CON <b>128.25</b>	UNICOM <b>122.95</b>
----------------------	---	---	--------------------------	-------------------------



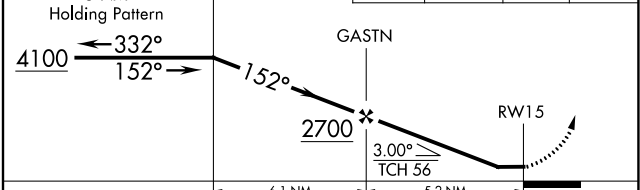
SE-2, 26 DEC 2024 to 23 JAN 2025

SE-2, 26 DEC 2024 to 23 JAN 2025

ELEV 969	<b>D</b>	TDZE 968
----------	----------	----------



VGSI and descent angles not coincident (VGSI Angle 3.00/TCH 38).	3000	COLEB	tr 102°	GSO
--	------	-------	---------	-----



CATEGORY	A	B	C	D
LNAV MDA	1440-1	472 (500-1)	1440-1 3/8	472 (500-1 3/8)
CIRCLING	1480-1 511 (600-1)	1580-1 611 (700-1)	1700-2 731 (800-2)	1760-2 1/2 791 (800-2 1/2)