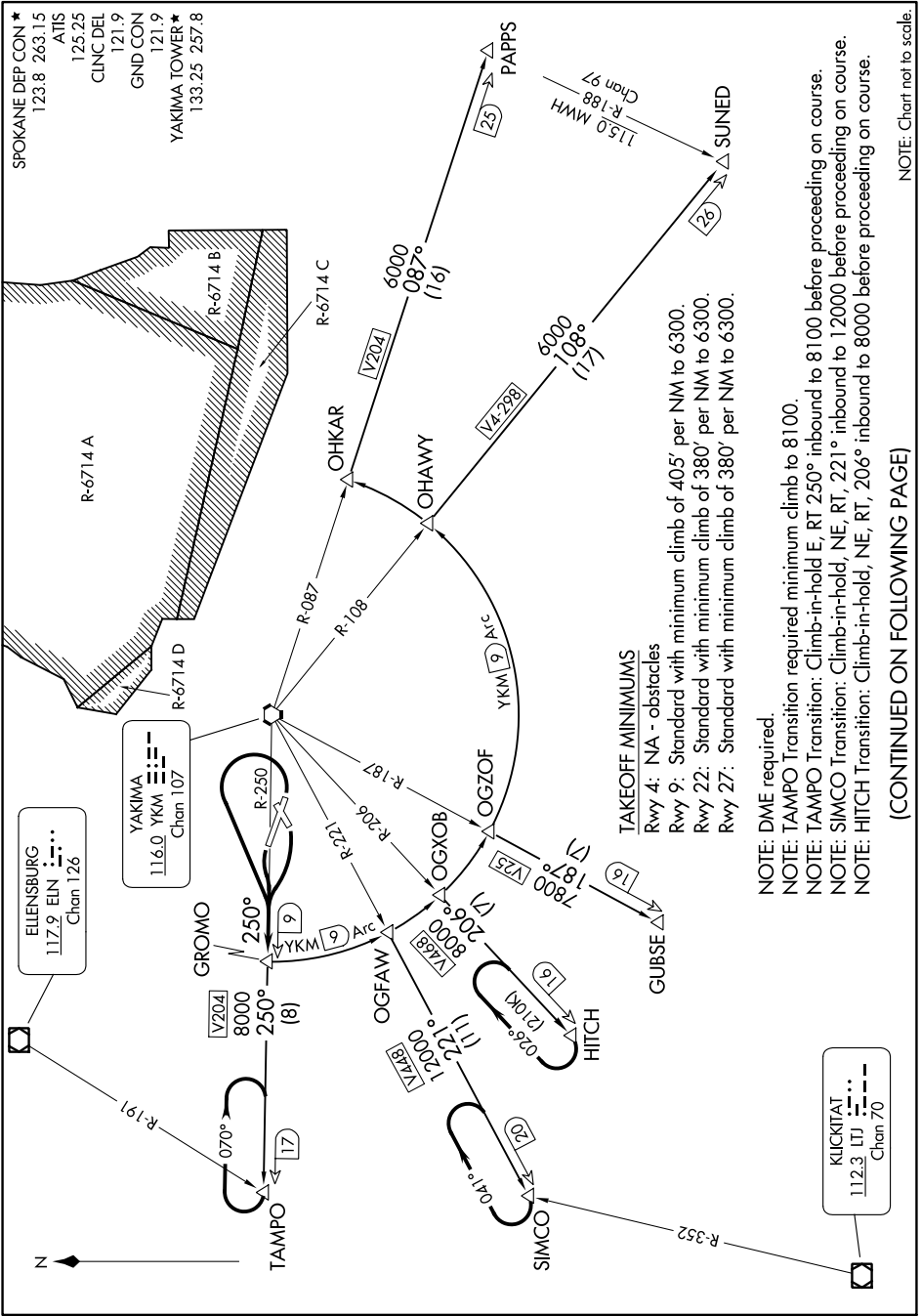


GROMO FOUR DEPARTURE

NW-1, 26 DEC 2024 to 23 JAN 2025



NOTE: Chart not to scale.

(CONTINUED ON FOLLOWING PAGE)

NOTE: DME required.
NOTE: TAMPO Transition required minimum climb to 8100.
NOTE: TAMPO Transition: Climb-in-hold E, RT 250° inbound to 8100 before proceeding on course.
NOTE: SIMCO Transition: Climb-in-hold, NE, RT, 221° inbound to 12000 before proceeding on course.
NOTE: HITCH Transition: Climb-in-hold, NE, RT, 206° inbound to 8000 before proceeding on course.

GROMO FOUR DEPARTURE

NW-1, 26 DEC 2024 to 23 JAN 2025