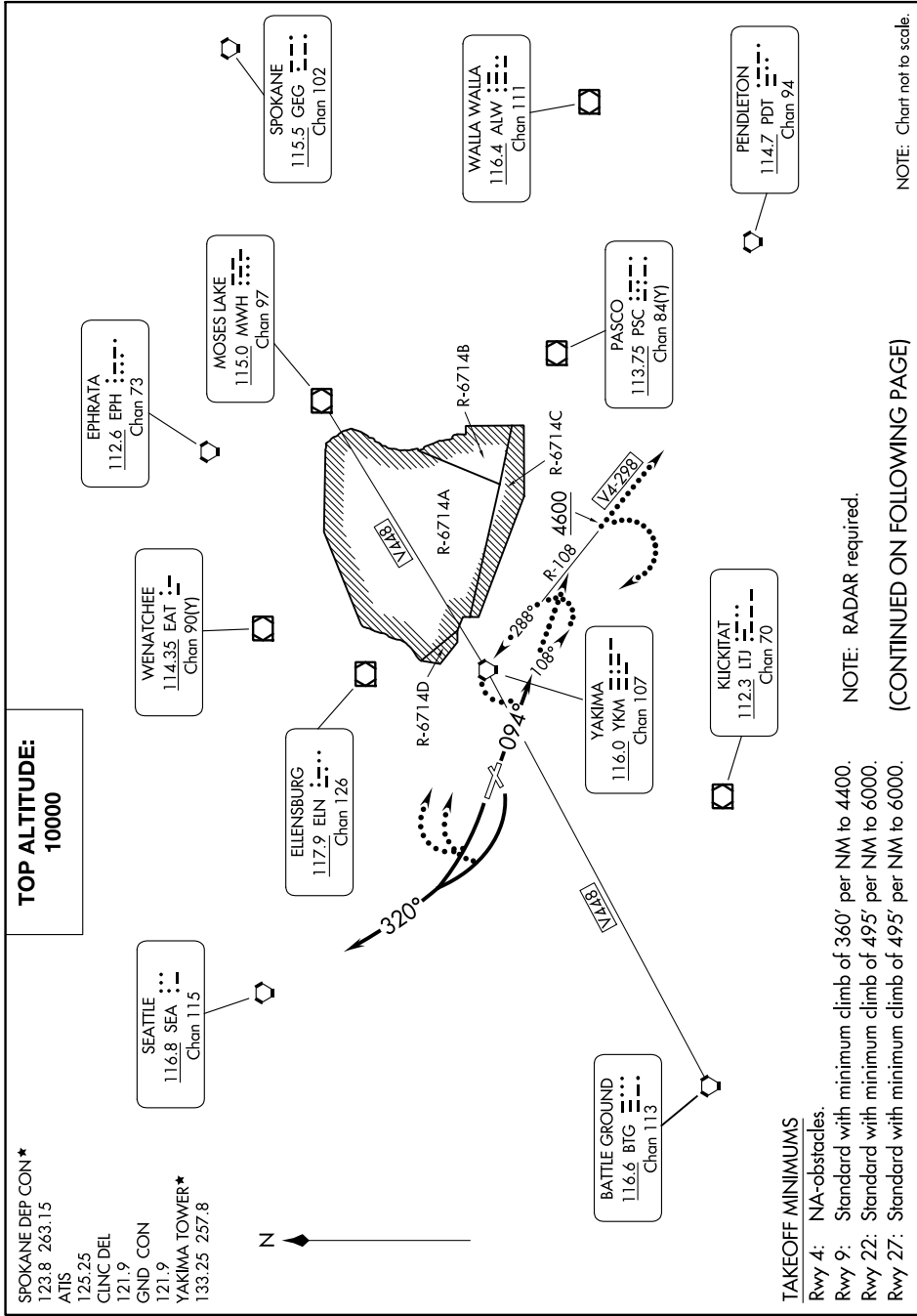


# NACHES FOUR DEPARTURE

YAKIMA AIR TRML/MCALLISTER FLD (YKM)  
AL-465 (FAA) YAKIMA, WASHINGTON

NW-1, 26 DEC 2024 to 23 JAN 2025



SPOKANE DEP CON\*  
123.8 263.15  
ATIS  
125.25  
CINC DEL  
121.9  
GND CON  
121.9  
YAKIMA TOWER\*  
133.25 257.8

# NACHES FOUR DEPARTURE

10NOV16

### TAKEOFF MINIMUMS

- Rwy 4: N/A-obstacles.
- Rwy 9: Standard with minimum climb of 360' per NM to 4400.
- Rwy 22: Standard with minimum climb of 495' per NM to 6000.
- Rwy 27: Standard with minimum climb of 495' per NM to 6000.

NOTE: RADAR required.

(CONTINUED ON FOLLOWING PAGE)

NOTE: Chart not to scale.

YAKIMA, WASHINGTON

YAKIMA AIR TRML/MCALLISTER FLD (YKM)

NW-1, 26 DEC 2024 to 23 JAN 2025