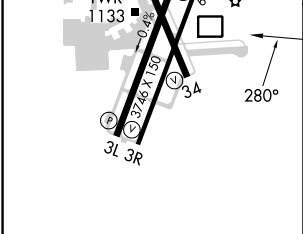
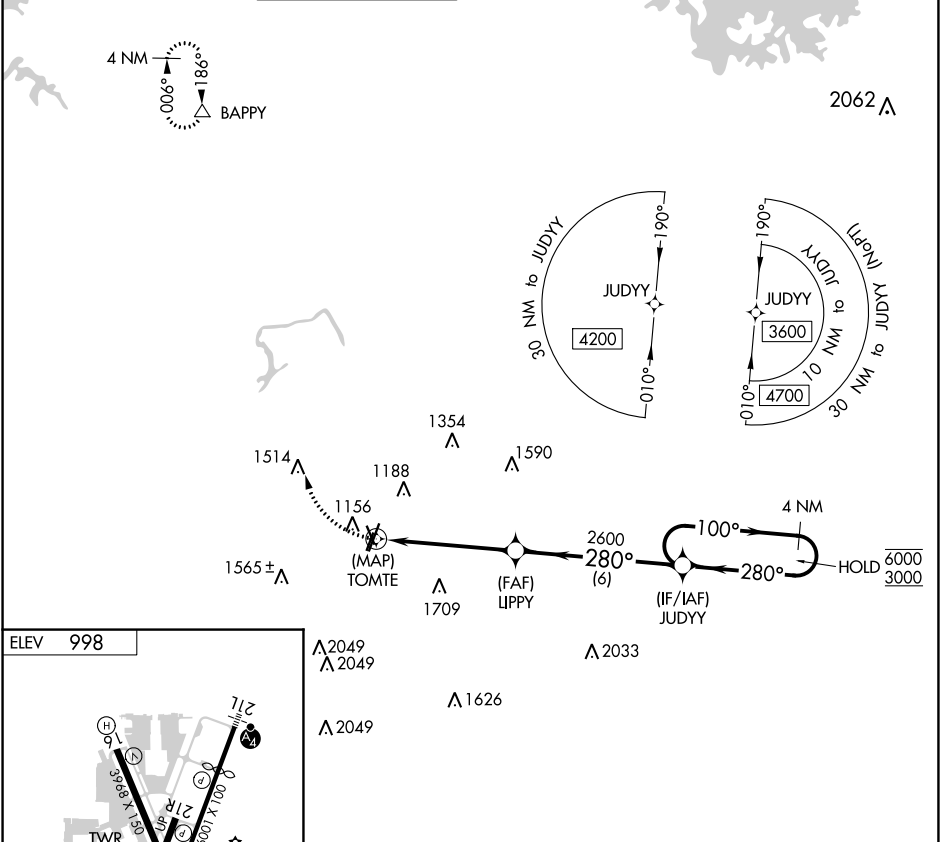


APP CRS	Rwy Idg	N/A
<b>280°</b>	TDZE	N/A
	Apt Elev	<b>998</b>

# RNAV (GPS)-A

DEKALB-PEACHTREE (PDK)

RNP APCH.		MISSED APPROACH: Climbing right turn to 4000 direct BAPPY and hold.							
Circling Rwy 16, 34 NA at night.		ATIS	ATLANTA APP CON	PEACHTREE TOWER ★	GND CON	CLNC DEL	CLNC DEL	UNICOM	
<b>128.4</b>	<b>126,975 239,275</b>	<b>120.9(CTAF) 281.5</b>	<b>121.6</b>	<b>125.2</b>	<b>120.9</b> <small>(When twr closed)</small>	<b>122.95</b>	<b>120.0</b>		



CATEGORY	A	B	C	D
CIRCLING	1580-1	582 (600-1)	1840-2½ 842 (900-2½)	2060-3 1062 (1100-3)

SE-4, 26 DEC 2024 to 23 JAN 2025

SE-4, 26 DEC 2024 to 23 JAN 2025