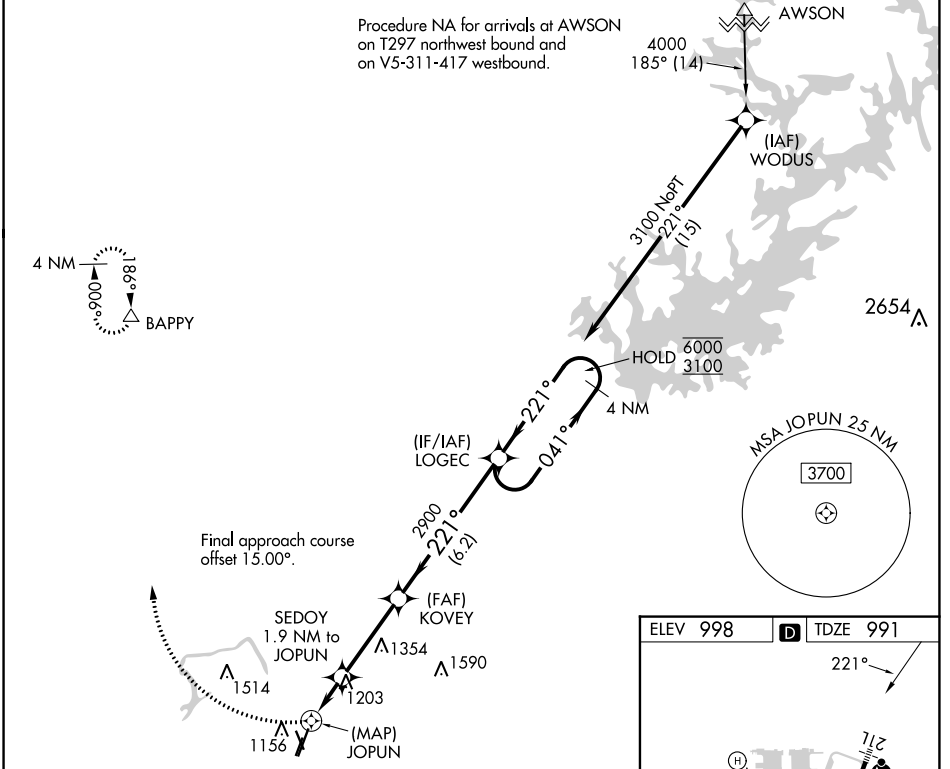


RNAV (GPS) Y RWY 21L

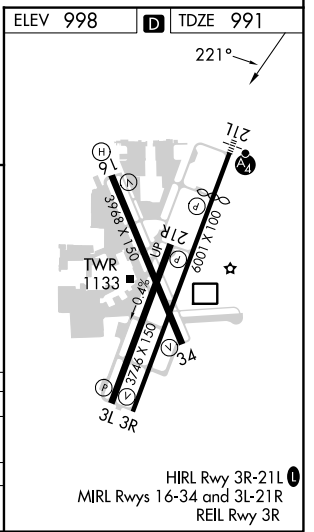
DEKALB-PEACHTREE (PDK)

APP CRS 221°	Rwy Idg 4996
	TDZE 991
	Apt Elev 998

RNP APCH.				MALSF	MISSED APPROACH: Climbing right turn to 4000 direct BAPPY and hold.		
<p>⚠ Circling Rwy 16, 34 NA at night. Rwy 21L helicopter visibility reduction below 3/4 SM NA. For uncompensated Baro-VNAV systems, procedure NA below -8°C or above 54°C. For inop ALS, increase LNAV/VNAV all Cats visibility to 1 1/2 SM and LNAV Cat A/B visibility to RVR 5500.</p>							
ATIS 128.4	ATLANTA APP CON 126,975 239,275	PEACHTREE TOWER★ 120.9(CTAF) 281.5	GND CON 121.6	CLNC DEL 125.2	CLNC DEL 120.9 (When twr closed)	UNICOM 122.95	120.0



4000	BAPPY	SEDOY 1.9 NM to JOPUN		KOVEY 2900	LOGEC	4 NM Holding Pattern
*LNAV only.		*0.8 NM to JOPUN				
JOPUN		1800*	2900	041° → 6000	← 221°	6000 3100
GP 3.00° TCH 56						
0.5 0.8 NM		1.1 NM	3.5 NM	6.2 NM		
CATEGORY	A	B	C	D		
LNAV/VNAV	DA	1449/55		458 (500-1)		
LNAV MDA	1460/40	469 (500-3/4)	1460/60	469 (500-1 1/4)		
CIRCLING	1500-1	502 (600-1)	1840-2 1/2	2060-3		
			842 (900-2 1/2)	1062 (1100-3)		



SE-4, 26 DEC 2024 to 23 JAN 2025

SE-4, 26 DEC 2024 to 23 JAN 2025