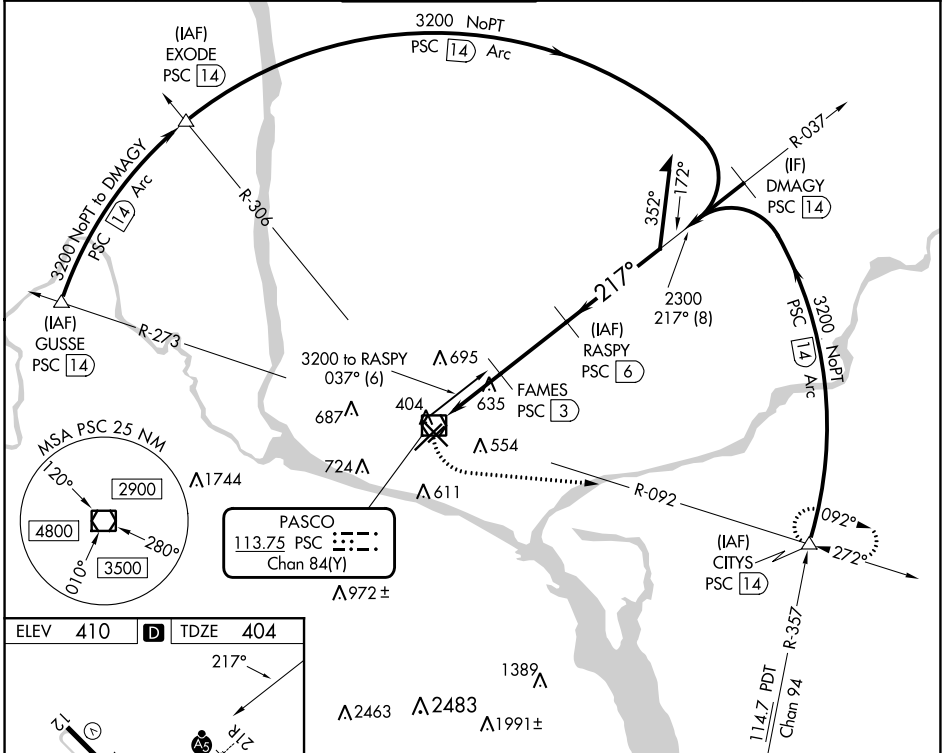


VOR/DME PSC <b>113.75</b> Chan <b>84(Y)</b>	APP CRS <b>217°</b>	Rwy Idg <b>7110</b> TDZE <b>404</b> Apt Elev <b>410</b>
---	------------------------	---

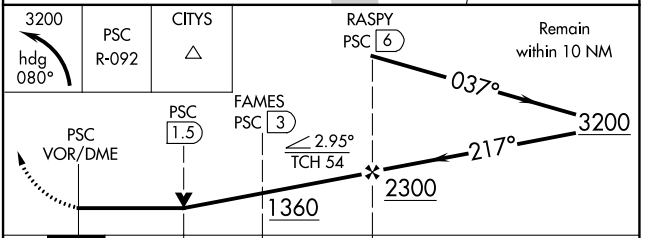
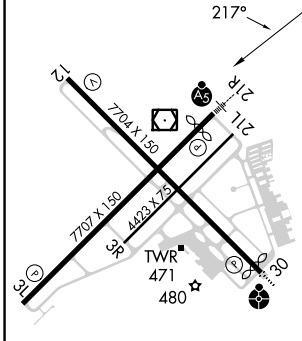
# VOR RWY 21R

TRI-CITIES (PSC)

DME required.		MALSR 		MISSED APPROACH: Climbing left turn to 3200 on heading 080° and PSC VOR/DME R-092 PSC VOR/DME to CITYS INT/PSC 14 DME and hold.	
ATIS <b>125.65</b>	SPOKANE APP CON * <b>128.75 377.2</b>	TRI-CITIES TOWER * <b>135.3 (CTAF) 323.3</b>	GND CON <b>121.8</b>	CLNC DEL <b>120.0</b>	UNICOM <b>122.95</b>



ELEV 410	<b>D</b>	TDZE 404
----------	----------	----------



CATEGORY	A	B	C	D
S-21R	940/24	536 (600-½)	940/55	536 (600-1)
<b>C</b> CIRCLING	940-1	530 (600-1)	1040-1¾ 630 (700-1¾)	1100-2¼ 690 (700-2¼)

REIL Rwy 3L and 12  
MIRL Rwy 12-30  
HIRL Rwy 3L-21R

NW-1, 26 DEC 2024 to 23 JAN 2025

NW-1, 26 DEC 2024 to 23 JAN 2025