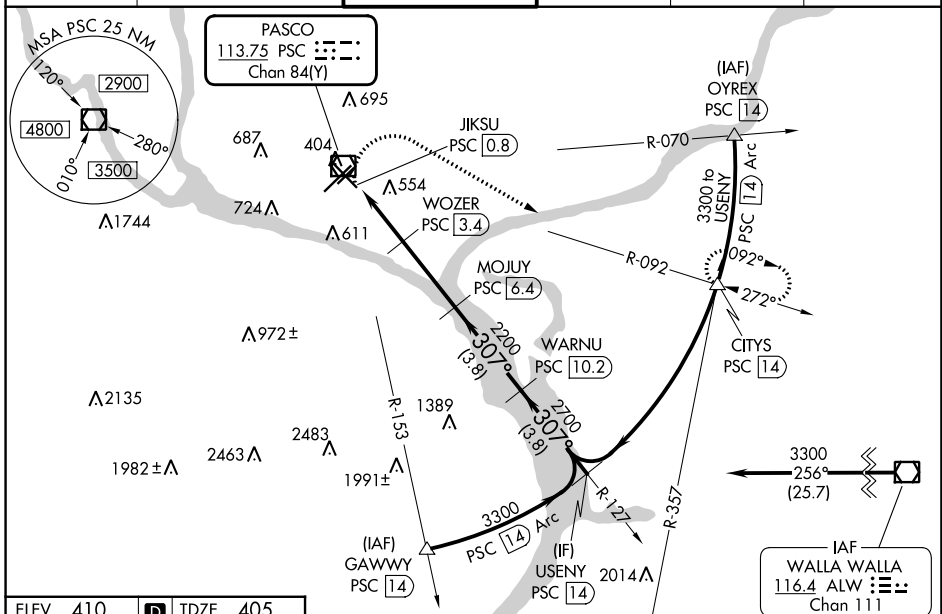


VOR/DME PSC 113.75 Chan 84(Y)	APP CRS 307°	Rwy Idg 7504 TDZE 405 Apt Elev 410
---	------------------------	---

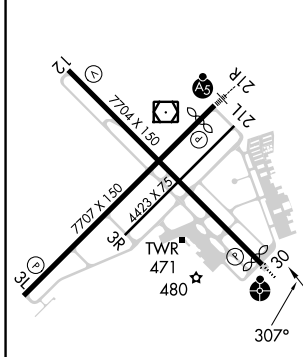
VOR RWY 30 TRI-CITIES(PSC)

DME required.			MISSED APPROACH: Climbing right turn to 3200 on heading 105° and PSC R-092 to CITIES/PSC 1.4 DME and hold.
Rwy 30 helicopter visibility reduction below 3/4 SM NA. VDP NA when using Hermiston altimeter setting. When local altimeter setting not received, use Hermiston altimeter setting and increase all MDAs 100 feet, increase S-30 visibility Cat C/D 3/8 SM and Circling Cat C/D visibility 1/4 SM. For inop ALS, increase S-30 Cat C/D visibility to 1 1/8 SM.			

ATIS 125.65	SPOKANE APP CON * 128.75 377.2	TRI-CITIES TOWER * 135.3 (CTAF) 323.3	GND CON 121.8	CLNC DEL 120.0	UNICOM 122.95
-----------------------	--	--	-------------------------	--------------------------	-------------------------

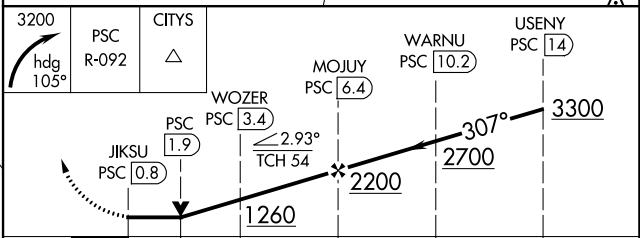


ELEV 410	D	TDZE 405
----------	----------	----------



REIL Rws 3L and 12	MIRL Rwy 12-30	HIRL Rwy 3L-21R
--------------------	----------------	-----------------

Procedure NA for arrival on ALW VOR/DME airway radials 216 CW 314.



CATEGORY	A	B	C	D
S-30	820-3/4	415 (500-3/4)	820-1	415 (500-1)
C CIRCLING	880-1 470 (500-1)	940-1 530 (600-1)	1040-1 3/4 630 (700-1 3/4)	1100-2 1/4 690 (700-2 1/4)

NW-1, 26 DEC 2024 to 23 JAN 2025

NW-1, 26 DEC 2024 to 23 JAN 2025