

WAAS CH 70419 W22A	APP CRS 222°	Rwy Idg TDZE Apt Elev	5675 4310 4314
--	------------------------	-----------------------------	---

RNAV (GPS) RWY 22

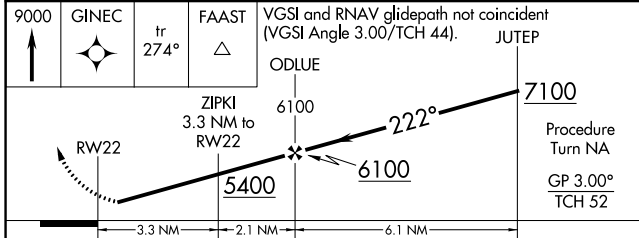
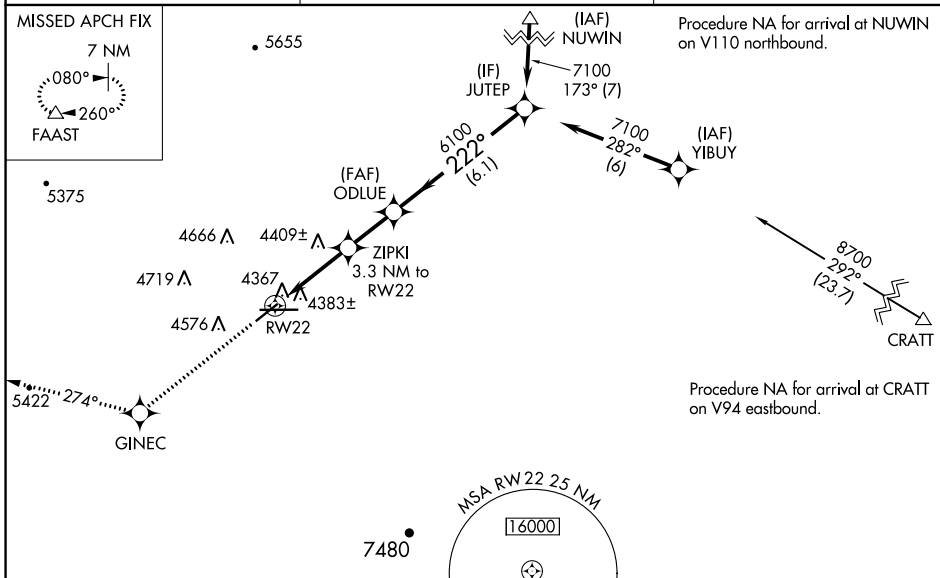
DEMING MUNI (DMN)

RNP APCH - GPS.

⚠ For uncompensated Baro-VNAV systems, LNAV/VNAV NA below -23°C or above 40°C. Baro-VNAV NA when using Las Cruces altimeter setting. When local altimeter setting not received, use Las Cruces altimeter setting and increase all DA 114 feet and all MDA 120 feet; increase LPV and LNAV/VNAV all Cats visibility ¼ mile, increase LNAV Cats C and D visibility ½ mile, increase Circling Cat B visibility ¼ mile and Circling Cats C and D visibility ½ mile. Rwy 22 helicopter visibility reduction below 1 SM NA. Straight-in Rwy 22 NA at night, Circling Rwy 22, 26 NA at night.

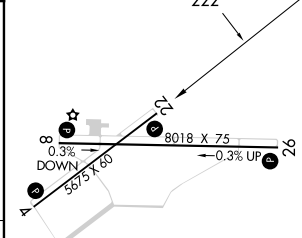
MISSED APPROACH: Climb to 9000 direct GINEC and on track 274° to FAAST and hold.

ASOS 118.525	ALBUQUERQUE CENTER 128.2 285.5	UNICOM 122.8 (CTAF) 0
------------------------	--	---------------------------------



CATEGORY	A	B	C	D
LPV DA		4560-1	250 (300-1)	
LNAV/VNAV DA		4637-1 ¼	327 (400-1 ¼)	
LNAV MDA	4660-1	350 (400-1)		4660-1 ¼ 350 (400-1 ¼)
CIRCLING	4820-1 506 (600-1)	4940-1 626 (700-1)	5020-2 706 (800-2)	5020-2 ¼ 706 (800-2 ¼)

ELEV 4314	TDZE 4310
-----------	-----------



SW-1, 26 DEC 2024 to 23 JAN 2025

SW-1, 26 DEC 2024 to 23 JAN 2025