

| | | | |
|--|------------------------|-----------------------------|---|
| WAAS CH 99319 W04A | APP CRS 042° | Rwy Idg TDZE Apt Elev | 5675 4312 4314 |
|--|------------------------|-----------------------------|---|

RNAV (GPS) RWY 4

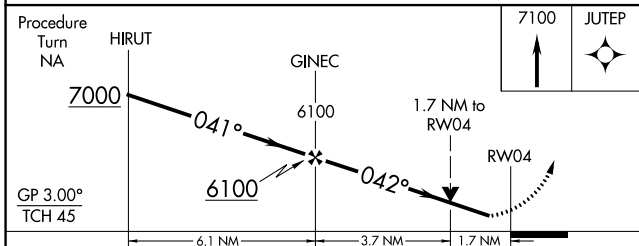
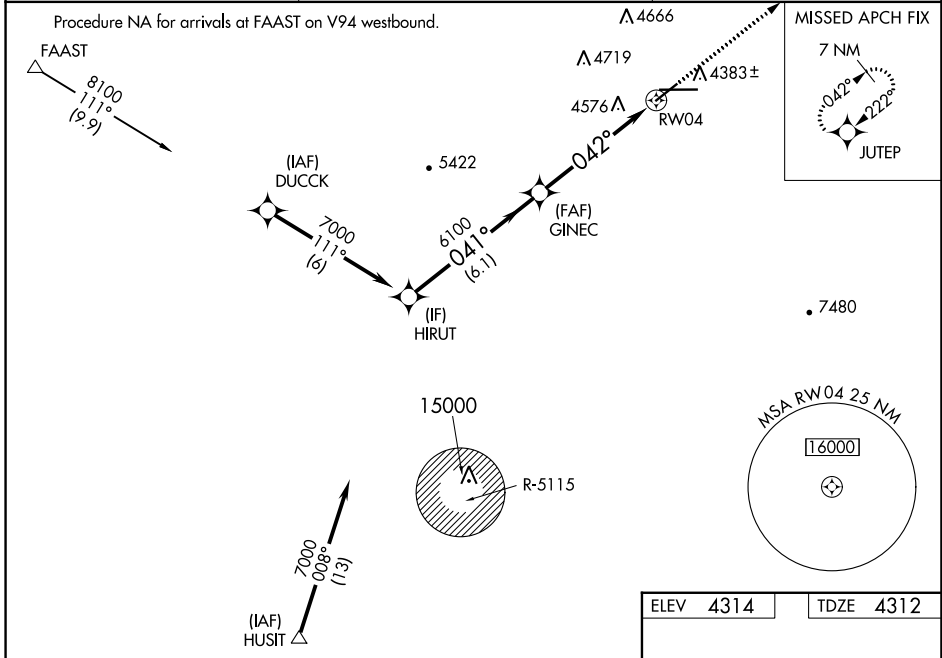
DEMING MUNI (DMN)

RNP APCH - GPS.

⚠ For uncompensated Baro-VNAV systems, LNAV/VNAV NA below -23°C or above 40°C. VDP and Baro-VNAV NA when using Las Cruces altimeter setting. When local altimeter setting not received, use Las Cruces altimeter setting and increase all DA 114 feet and all MDA 120 feet; increase LPV and LNAV/VNAV all Cats visibility ½ mile, increase LNAV Cats C and D visibility ½ mile, increase Circling Cat B visibility ¼ mile and Cats C and D visibility ½ mile. Rwy 4 helicopter visibility reduction below ¾ SM NA. Circling Rwy 22, 26 NA at night.

MISSED APPROACH:
Climb to 7100 direct JUTEF and hold.

| | | |
|------------------------|--|-------------------------------|
| ASOS 118.525 | ALBUQUERQUE CENTER 128.2 285.5 | UNICOM 122.8 (CTAF) |
|------------------------|--|-------------------------------|



| | |
|-----------|-----------|
| ELEV 4314 | TDZE 4312 |
|-----------|-----------|

MIRL Rwy 4-22
MIRL Rwy 8-26

| CATEGORY | A | B | C | D |
|--------------|----------------------|----------------------|----------------------|----------------------|
| LPV DA | 4562-1 250 (300-1) | | | |
| LNAV/VNAV DA | 4945-2¼ 633 (700-2¼) | | | |
| LNAV MDA | 4880-1 568 (600-1) | 4880-1½ 568 (600-1½) | 4880-1¾ 568 (600-1¾) | 4880-2 568 (600-2) |
| CIRCLING | 4880-1 566 (600-1) | 4940-1 626 (700-1) | 5020-2 706 (800-2) | 5020-2¼ 706 (800-2¼) |

SW-1, 26 DEC 2024 to 23 JAN 2025

SW-1, 26 DEC 2024 to 23 JAN 2025