

(SUTHU.SUTHU2) 22139

SUTHU TWO ARRIVAL (RNAV)

AL-488 (FAA)

TRAVIS AFB (KSUU)
FAIRFIELD, CALIFORNIA

RNAV 1 - DME/DME/IRU or GPS.
RADAR required.

TOCOS
FL370
FL330

OKNIE
FL300

TRAVIS APP CON
126.6 281.45 (N)
119.9 322.325 (S)
TRAVIS TOWER
120.75 254.4
GND CON
121.8 289.4
D-ATIS
135.55 292.125

WALBO
FL300

SUTHU
15000
13000

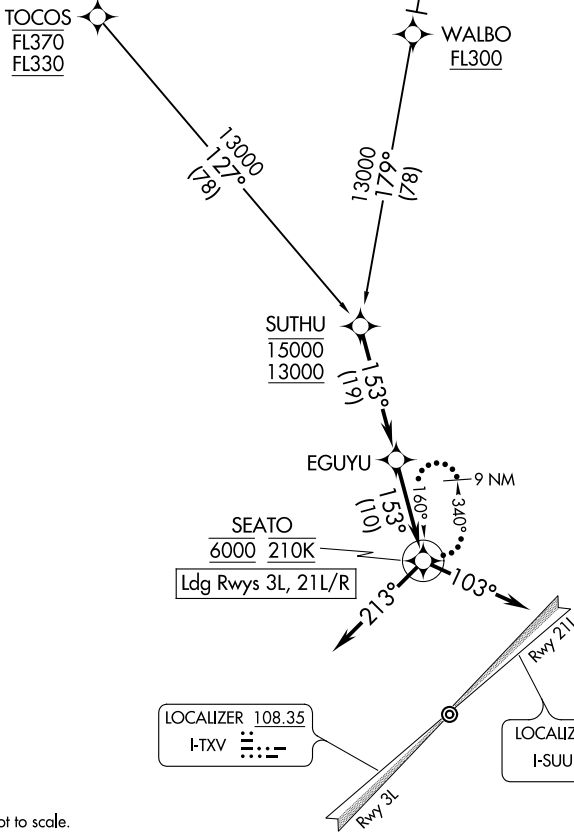
EGUYU

SEATO
6000 210K

Ldg Rwy 3L, 21L/R

LOCALIZER 108.35
I-TXV

LOCALIZER 110.1
I-SUU



NOTE: Chart not to scale.

ARRIVAL ROUTE DESCRIPTION

OKNIE TRANSITION (OKNIE.SUTHU2)

TOCOS TRANSITION (TOCOS.SUTHU2)

From SUTHU on track 153° to EGUYU.

LANDING RUNWAY 3L: From EGUYU on track 153° to cross SEATO at 6000 and at 210K, then on heading 213°. Expect RADAR vectors to final approach course.

LANDING RUNWAYS 21L/R: From EGUYU on track 153° to cross SEATO at 6000 and at 210K, then on heading 103°. Expect RADAR vectors to final approach course.

LOST COMMUNICATIONS: From SEATO, execute ILS or LOC RWY 21L or TACAN RWY 3L approach. If unable, hold at SEATO as depicted, maintain 6000.

SUTHU TWO ARRIVAL (RNAV)

(SUTHU.SUTHU2) 19MAY22

FAIRFIELD, CALIFORNIA
TRAVIS AFB (KSUU)

SW-2, 26 DEC 2024 to 23 JAN 2025

SW-2, 26 DEC 2024 to 23 JAN 2025