

VORTAC GCK <b>113.3</b> Chan <b>80</b>	APP CRS <b>286°</b>	Rwy ldg TDZE Apt Elev <b>5700</b> <b>2885</b> <b>2891</b>
--	------------------------	--

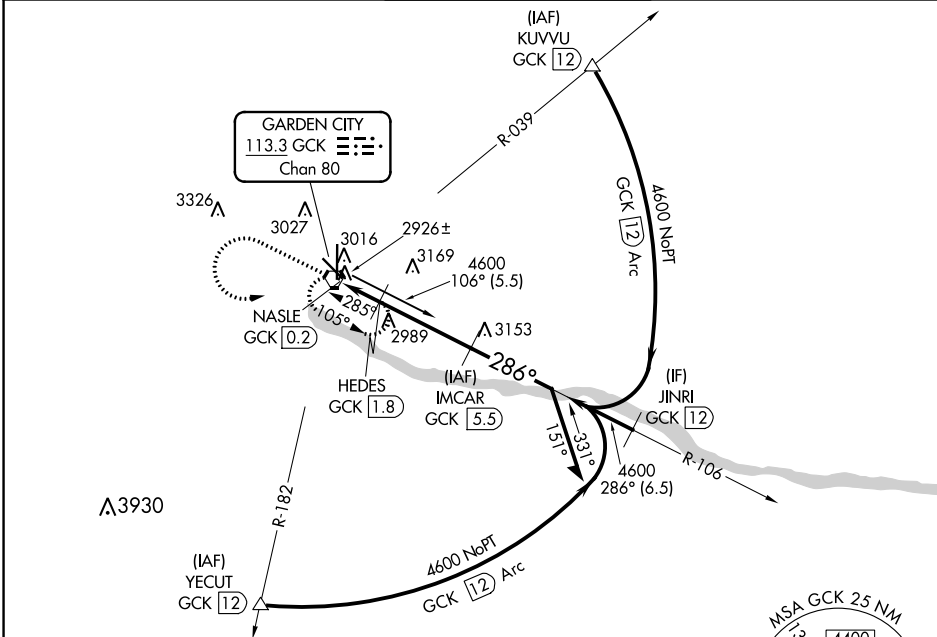
# VOR/DME RWY 30

GARDEN CITY RGNL (GCK)

**⚠** When local altimeter setting not received, use Dodge City Rgnl altimeter setting and increase all MDA 140 feet and Circling Cat C visibility 1/2 SM and Circling Cat D visibility 1/4 SM.

**MISSED APPROACH:**  
Climb to 4000 then climbing left turn to 4600 direct GCK VORTAC and hold.

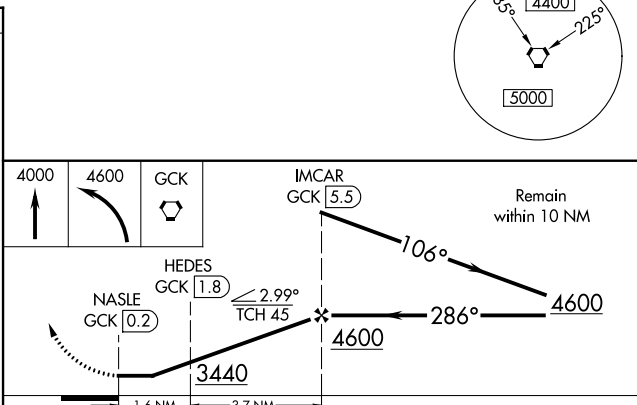
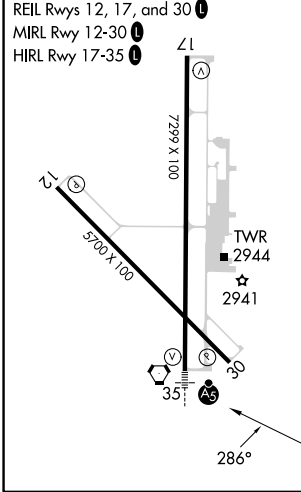
ASOS <b>121.325</b>	KANSAS CITY CENTER <b>125.2 285.425</b>	GARDEN CITY TOWER ★ <b>118.15 (CTAF) 0 254.4</b>	GND CON <b>119.0 254.4</b>	UNICOM <b>122.95</b>
------------------------	--	---	-------------------------------	-------------------------



NC-2, 26 DEC 2024 to 23 JAN 2025

NC-2, 26 DEC 2024 to 23 JAN 2025

ELEV 2891	<b>D</b>	TDZE 2885
-----------	----------	-----------



CATEGORY	A	B	C	D
S-30	3240-1 355 (400-1)		3240-1 1/4 355 (400-1 1/4)	
<b>C</b> CIRCLING	3320-1 429 (500-1)	3360-1 469 (500-1)	3480-1 1/2 589 (600-1 1/2)	3480-2 589 (600-2)