

(FLMGO2.FLMGO) 24081

AL-494 (FAA)

HOMESTEAD ARB (KHST)

# FLMGO TWO DEPARTURE(RNAV)

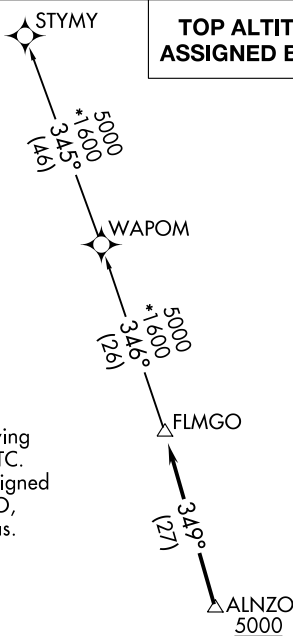
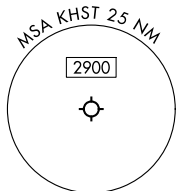
HOMESTEAD, FLORIDA

RNAV 1 - DME/DME/IRU or GPS.

RADAR required.

**TOP ALTITUDE:  
ASSIGNED BY ATC**

MIAMI DEP CON  
125.5 354.1  
ATIS\*  
132.275 269.9  
CLNC DEL  
121.75 275.8  
GND CON  
121.75 275.8  
HOMESTEAD TOWER  
133.45 279.55

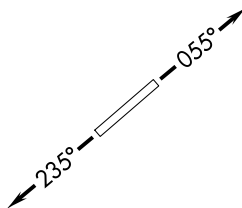


- NOTE: Jet aircraft only.
- NOTE: Accelerate to 250K until leaving 10000, if unable, advise ATC.
- NOTE: WAPOM Transition ATC assigned except aircraft landing: MCO, DAB, and MLB terminal areas.

### TAKEOFF MINIMUMS

Rwy 6: Standard with minimum climb of 500'/NM to 1800.  
Rwy 24: Standard with minimum climb of 500'/NM to 2200.

NOTE: Chart not to scale.



### DEPARTURE ROUTE DESCRIPTION

**TAKEOFF RUNWAY 6:** Climb on heading 055° or as assigned by ATC for RADAR vectors to cross ALNZO at or above 5000, thence. . . .  
**TAKEOFF RUNWAY 24:** Climb on heading 235° or as assigned by ATC for RADAR vectors to cross ALNZO at or above 5000, thence. . . .  
. . . .on track 349° to FLMGO, then on assigned transition. Maintain ATC assigned altitude. Expect filed altitude within 10 minutes after departure.

STYMY TRANSITION (FLMGO2.STYMY)  
WAPOM TRANSITION (FLMGO2.WAPOM)

**FLMGO TWO DEPARTURE(RNAV)**  
(FLMGO2.FLMGO) 21MAR24

HOMESTEAD, FLORIDA  
HOMESTEAD ARB (KHST)

SE-3, 26 DEC 2024 to 23 JAN 2025

SE-3, 26 DEC 2024 to 23 JAN 2025