

HOMESTEAD, FLORIDA

ILS or LOC Z RWY 6

LOC I-HST 109.9	APCH CRS 055°	Rwy Idg 11,201 TDZE 5 Arprt Elev 6
---------------------------	-------------------------	---

AL-494 [USAF]

HOMESTEAD ARB (KHST)

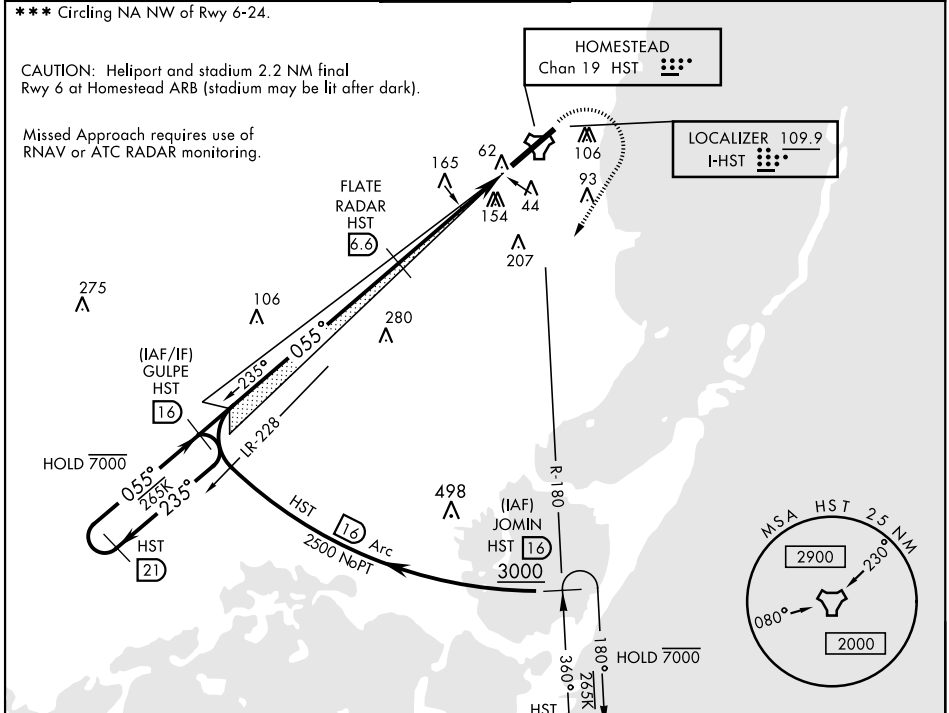
RADAR or DME required.

ALSF-1

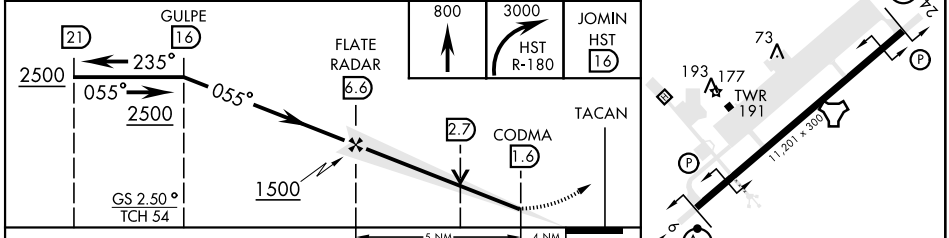
MISSED APPROACH: Climb to 800 then climbing right turn to 3000 intercept HST TACAN R-180 to JOMIN and hold.

*** When ALS inop, increase RVR to 40, vis to 3/4 mile.
 ** When ALS inop, increase CAT AB RVR to 55, vis to 1 mile; CAT CDE RVR to 60, vis to 1 1/2 miles.

ATIS ★ 132.275 269.9	APP CON 123.8 257.675	TOWER 133.45 279.55	GND CON 121.75 275.8	CLNC DEL 121.75 275.8
--------------------------------	---------------------------------	-------------------------------	--------------------------------	---------------------------------



ELEV 6	TDZE 5
--------	--------



CATEGORY	A	B	C	D	E
S-ILS 6 *	205/24 200 (200-1/2)				
S-LOC 6 **	460/24	455 (500-1/2)	460/45	455 (500-7/8)	
*** CIRCLING	460-1 454 (500-1)	500-1 494 (500-1)	520-1 1/2 514 (600-1 1/2)	580-2 574 (600-2)	780-2 3/4 774 (800-2 3/4)

HOMESTEAD, FLORIDA 25°29'N-80°23'W HOMESTEAD ARB (KHST)

Amtd 1 30DEC21

ILS or LOC Z RWY 6

SE-3, 26 DEC 2024 to 23 JAN 2025

SE-3, 26 DEC 2024 to 23 JAN 2025