

# MAYNR THREE DEPARTURE (RNAV)

SE-3, 26 DEC 2024 to 23 JAN 2025

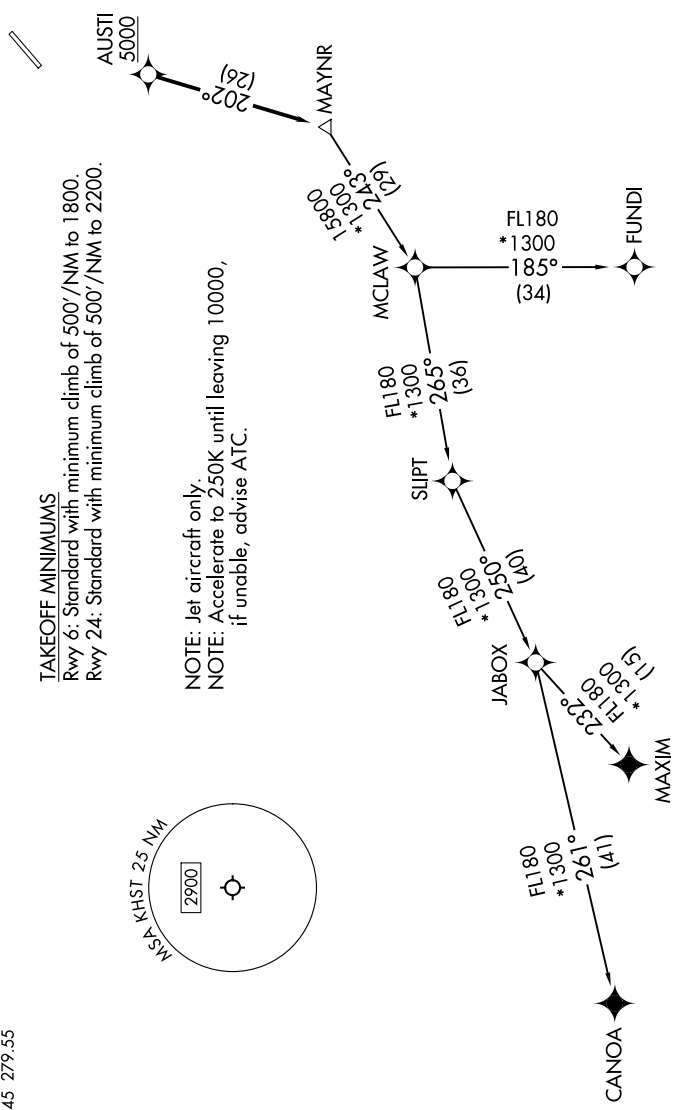
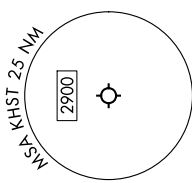
**TOP ALTITUDE:  
ASSIGNED BY ATC**

RNAV 1 - DME/DME/IRU or GPS.  
From SLIPT to MAXIM: RNAV 1 - GPS.  
From SLIPT to CANOA: RNAV 1 - GPS.  
RADAR required for non-GPS equipped aircraft.  
RADAR required.

MIAMI DEP CON  
125.5 354.1  
ATIS \*  
132.275 269.9  
CLNC DEL  
121.75 275.8  
GND CON  
121.75 275.8  
HOMESTEAD TOWER  
133.45 279.55

**TAKEOFF MINIMUMS**  
Rwy 6: Standard with minimum climb of 500'/NM to 1800.  
Rwy 24: Standard with minimum climb of 500'/NM to 2200.

NOTE: Jet aircraft only.  
NOTE: Accelerate to 250K until leaving 10000,  
if unable, advise ATC.



(CONTINUED ON FOLLOWING PAGE)

NOTE: Chart not to scale.

SE-3, 26 DEC 2024 to 23 JAN 2025