

WAAS CH <b>49122</b> <b>W32A</b>	APP CRS <b>323°</b>	Rwy Idg TDZE Apt Elev	<b>5056</b> <b>716</b> <b>716</b>
--	------------------------	-----------------------------	---

# RNAV (GPS) RWY 32

SAULT STE MARIE MUNI/SANDERSON FLD (A.NJ)

RNP APCH.

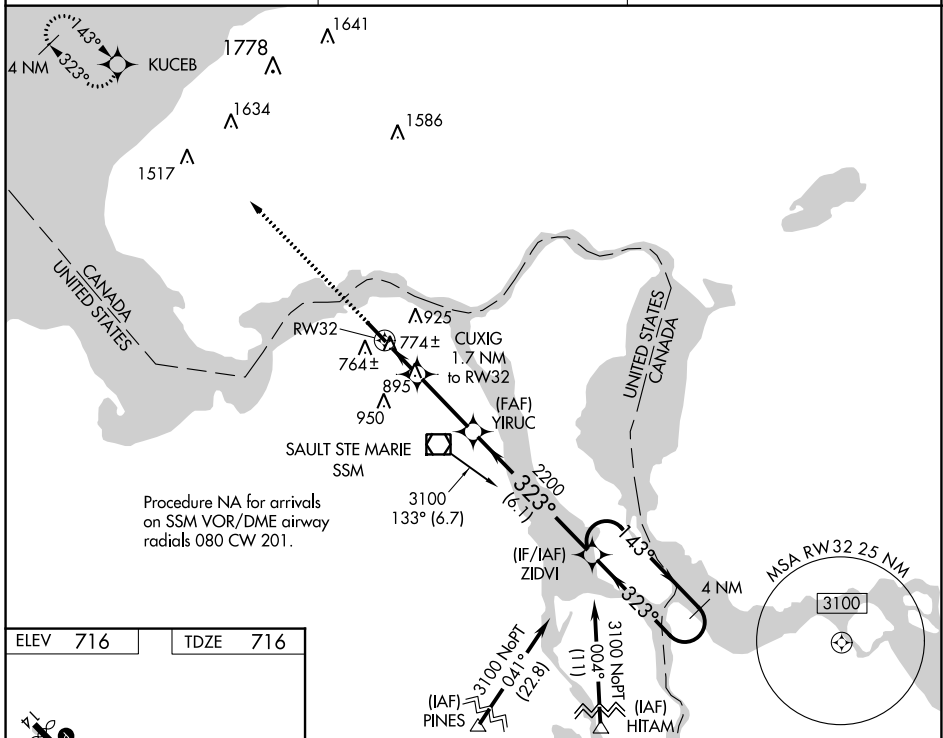
**⚠** Rwy 32 helicopter visibility reduction below 3/4 SM NA. When local altimeter setting not received, use Chippewa County Intl altimeter setting and increase all MDA 60 feet, and increase LP Cat C visibility 1/8 mile and LNAV Cat C visibility 1/4 mile.

MISSED APPROACH: Climb to 2800 direct KUCEB and hold.

ASOS  
**118.375**

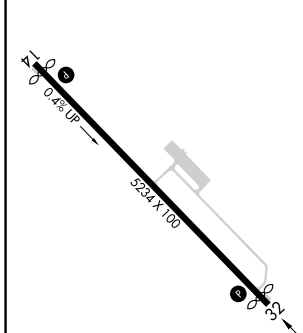
TORONTO CENTER  
**132.65 344.5**

UNICOM  
**122.7 (CTAF)**

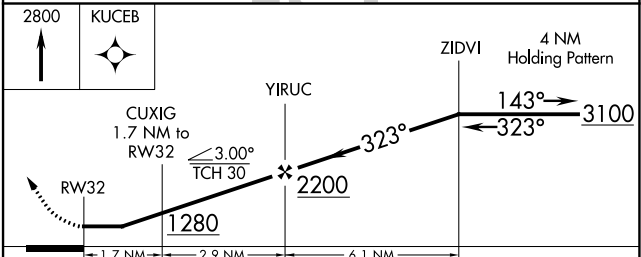


Procedure NA for arrivals on SSM VOR/DME airway radials 080 CW 201.

ELEV 716	TDZE 716
----------	----------



MIRL Rwy 14-32  
REIL Rwys 14 and 32



CATEGORY	A	B	C	D
LP MDA	1040-1 324 (400-1)			NA
LNAV MDA	1200-1 484 (500-1)	1200-1 484 (500-1 3/8)		NA
CIRCLING	1280-1 564 (600-1)	1320-1 604 (700-1 3/4)		NA