

| | | |
|-------------|----------|-------------|
| APP CRS | Rwy Idg | 6300 |
| 190° | TDZE | 6451 |
| | Apt Elev | 6451 |

RNAV (RNP) X RWY 19

JACKSON HOLE (JAC)

RNP AR APCH-GPS.

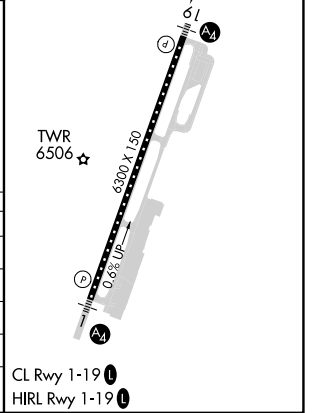
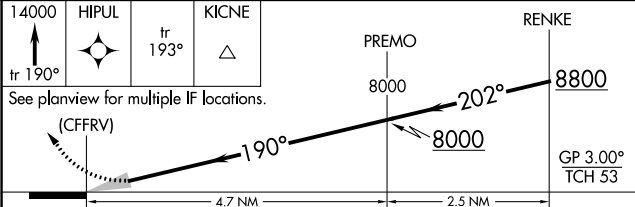
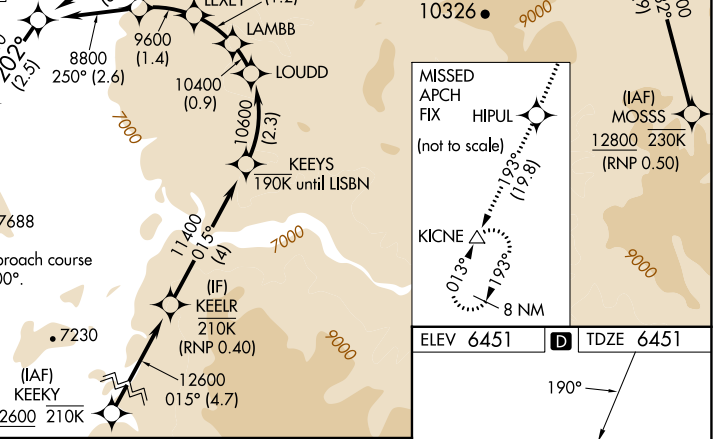
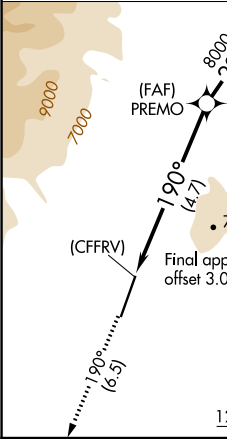
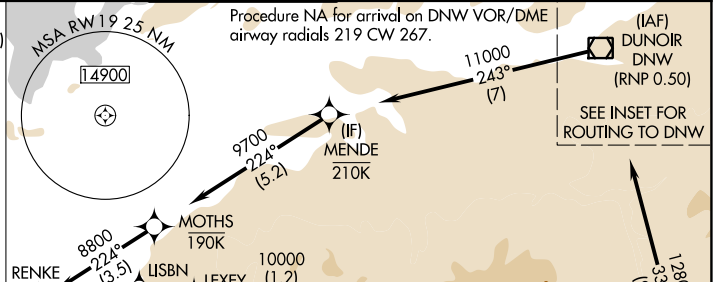
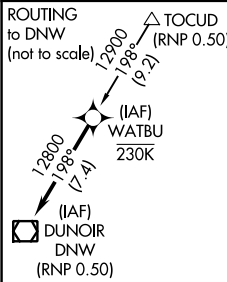
▽ For uncompensated Baro-VNAV systems, procedure NA below -27°C or above 54°C. For inop ALS, increase RNP 0.20# all Cats visibility to RVR 6000. For inop ALS, increase RNP 0.30 all Cats visibility to 1 1/4 SM.

✖ -22°C

MALS **📶**

MISSED APPROACH: Climb to 14000 on track 190° to HIPUL and on track 193° to KICNE and hold, continue climb-in-hold to 14000. *Missed approach requires minimum climb of 226 feet per NM to 11600. #Missed approach requires minimum climb of 215 feet per NM to 11600.

| | | | | |
|--------------------------|---|--|--------------------------|-------------------------|
| D-ATIS 120.625 | SALT LAKE CENTER 133.25 285.6 | JACKSON TOWER* 118.075 (CTAF) 📶 | GND CON 124.55 | UNICOM 122.95 |
|--------------------------|---|--|--------------------------|-------------------------|



| CATEGORY | A | B | C | D |
|--------------|---|------------|-----------------|---|
| RNP 0.10 DA* | | 6777/40 | 326 (400-3/4) | |
| RNP 0.20 DA# | | 6856/50 | 405 (500-1) | |
| RNP 0.30 DA# | | 6938/60 | 487 (500-1 1/4) | |
| RNP 0.30 DA | | 7045-1 3/8 | 594 (600-1 1/2) | |

AUTHORIZATION REQUIRED