

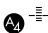
APP CRS Rwy Idg **6300**  
 006° TDZE **6431**  
 Apt Elev **6451**

# RNAV (RNP) Y RWY 1

JACKSON HOLE (JAC)

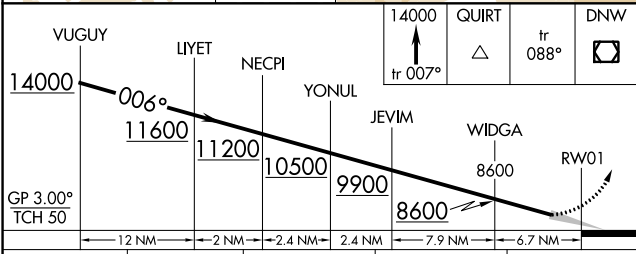
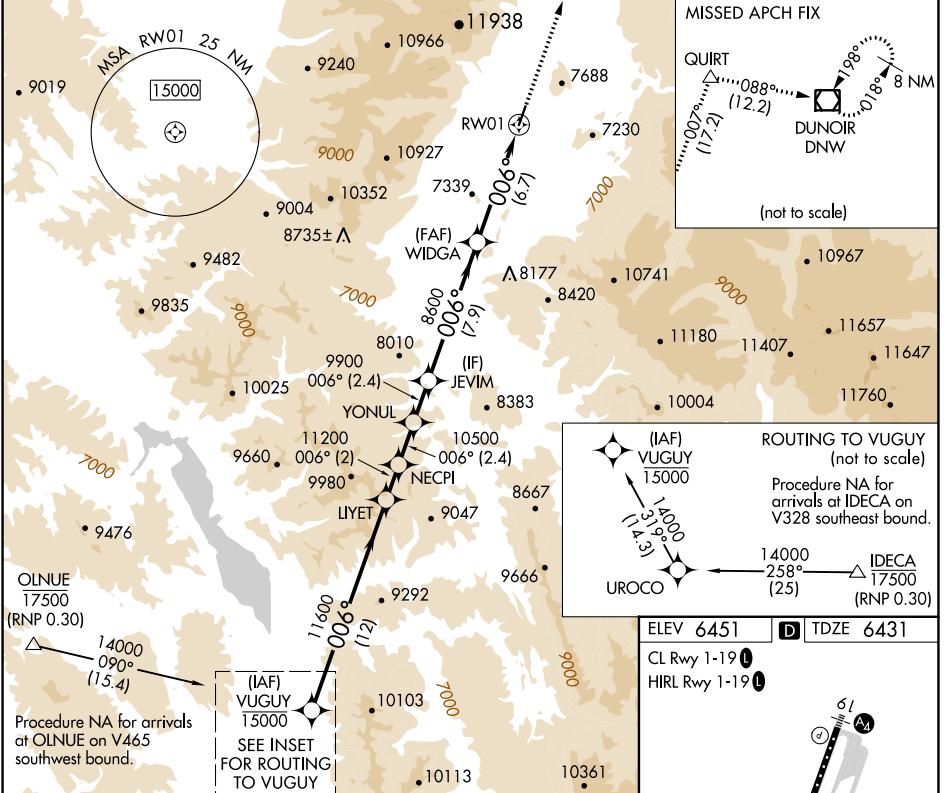
RNP AR APCH.

Inop table does not apply.  
 For uncompensated Baro-VNAV systems, procedure NA below -27°C or above 54°C.

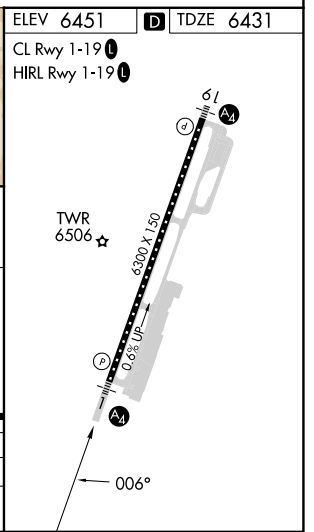
MALS 

MISSED APPROACH: Climb to 14000 on track 007° to QUIRT and track 088° to DNW VOR/DME and hold, continue climb-in-hold to 14000.

D-ATIS <b>120.625</b>	SALT LAKE CENTER <b>133.25 285.6</b>	JACKSON TOWER* <b>118.075 (CTAF) 1</b>	GND CON <b>124.55</b>	UNICOM <b>122.95</b>
--------------------------	---	---	--------------------------	-------------------------



CATEGORY	A	B	C	D
RNP 0.30 DA	7373-4		942 (1000-4)	



**AUTHORIZATION REQUIRED**

NW-1, 26 DEC 2024 to 23 JAN 2025

NW-1, 26 DEC 2024 to 23 JAN 2025