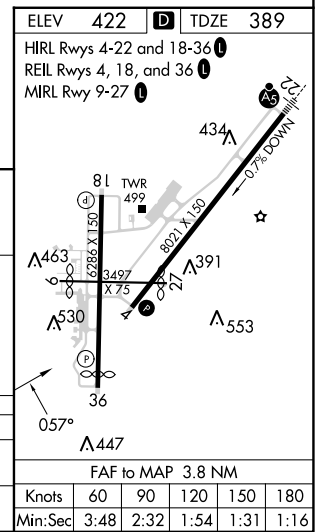
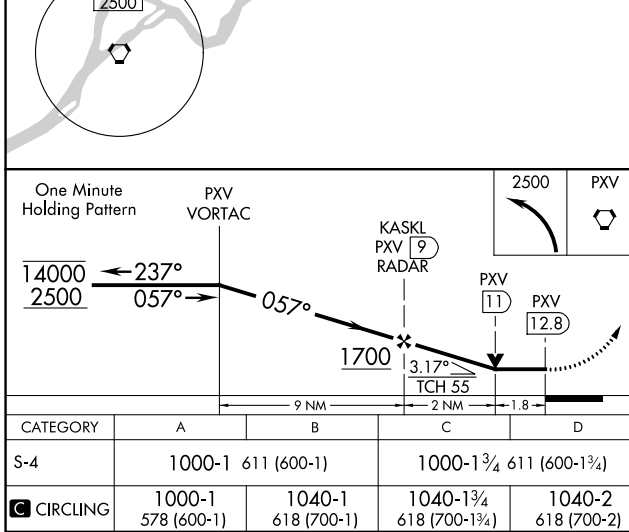
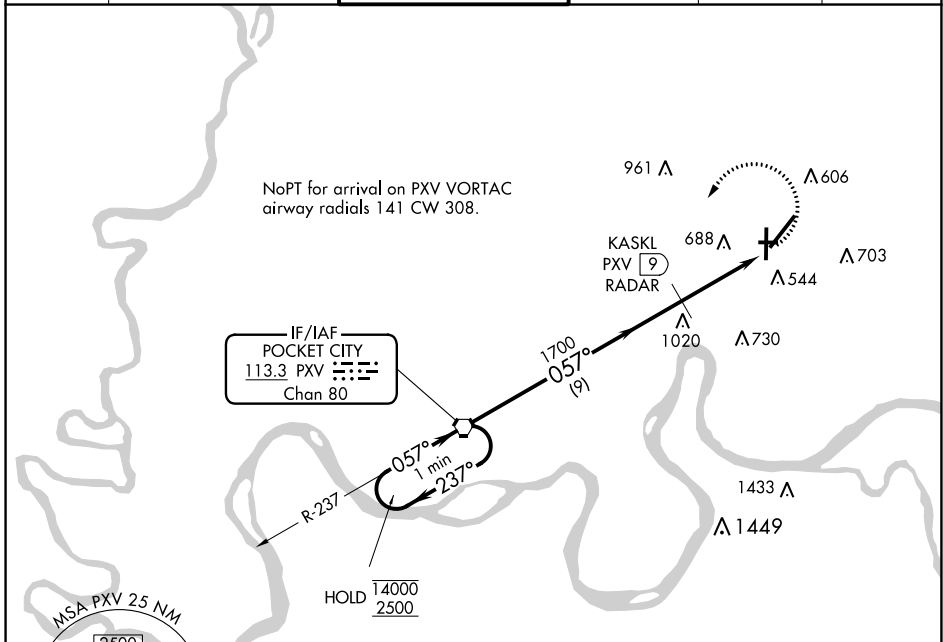


VORTAC PXV 113.3	APP CRS 057°	Rwy Idg TDZE Apt Elev	8021 389 422
Chan 80			

VOR RWY 4

EVANSVILLE RGNL (EVV)

DME or RADAR required.		MISSED APPROACH: Climbing left turn to 2500 direct PXV VORTAC and hold.			
ASR RWY 4 helicopter visibility reduction below 3/4 SM NA. Circling Rwy 9 NA at night.					
ATIS 120.2	EVANSVILLE APP CON ★ 124.025 290.9	EVANSVILLE TOWER ★ 118.7 (CTAF) 257.8	GND CON 121.9	CLNC DEL 126.6	UNICOM 122.95



EVANSVILLE, INDIANA		38°02'N-87°32'W		EVANSVILLE RGNL (EVV)	
Amdt 7A 13SEP18				VOR RWY 4	

EC-2, 26 DEC 2024 to 23 JAN 2025

EC-2, 26 DEC 2024 to 23 JAN 2025