

APP CRS	Rwy Idg	4750
297°	TDZE	1439
	Apt Elev	1442

RNAV (RNP) RWY 30

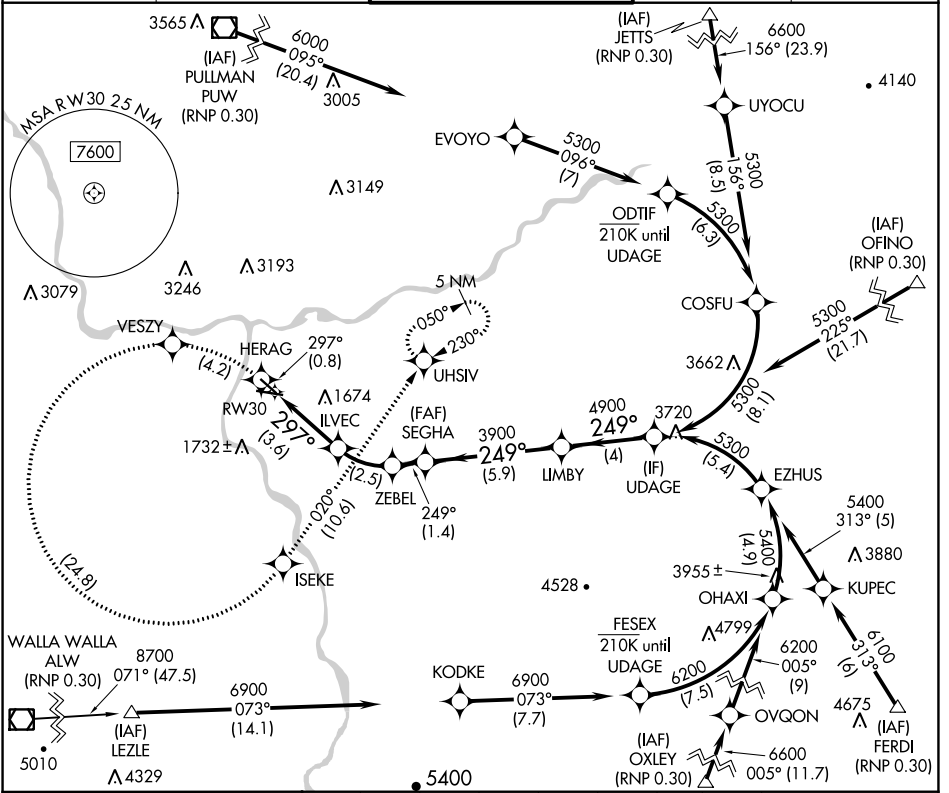
LEWISTON/NEZ PERCE COUNTY (LWS)

RNP AR APCH-GPS.

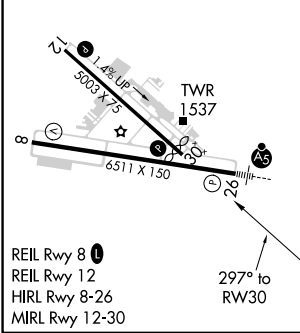
For uncompensated Baro-VNAV systems, procedure NA below -12°C or above 54°C.
Missed approach requires RNP less than RNP 1.00.

MISSED APPROACH: Climb to 6000 on track 297° to HERAG then left turn to VESZY then left turn to ISEKE and track 020° to UHSIV and hold.

ASOS 135.575	SEATTLE CENTER 123.95 290.55	LEWISTON TOWER ★ 119.4 (CTAF) 318.8	GND CON 121.9	UNICOM 122.95
------------------------	--	---	-------------------------	-------------------------



ELEV	1442	D	TDZE	1439
------	-------------	----------	------	-------------



UDAGE	5300	4900	3900	3900	2647	3448	3900	5300
	249°	249°	249°	249°	297°	249°	249°	249°
	5.9 NM	4.9 NM	4.4 NM	5.9 NM	3.6 NM	2.5 NM	1.4 NM	4 NM
CATEGORY	A	B	C	D				
RNP 0.30 DA	1781-1 342 (400-1)							

AUTHORIZATION REQUIRED

NW-1, 26 DEC 2024 to 23 JAN 2025

NW-1, 26 DEC 2024 to 23 JAN 2025