

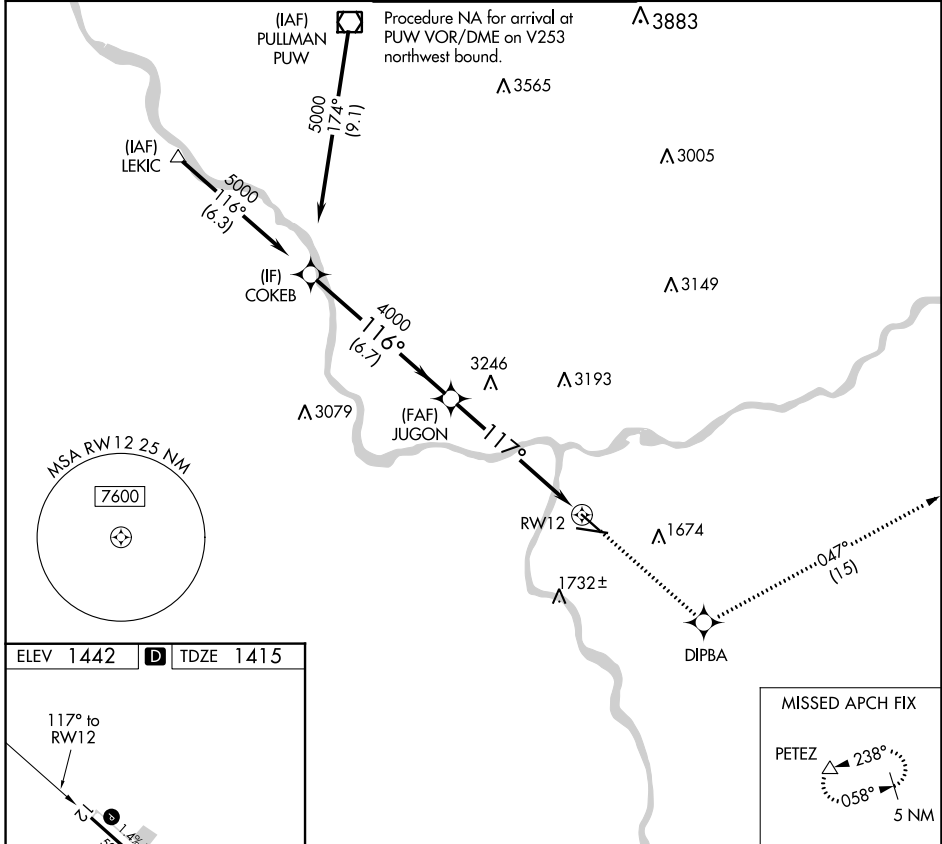
WAAS CH 56500 W12A	APP CRS 117°	Rwy Idg 4750 TDZE 1415 Apt Elev 1442
--	------------------------	---

RNAV (GPS) Y RWY 12

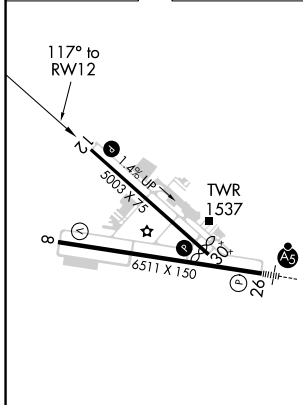
LEWISTON/NEZ PERCE COUNTY (LWS)

<p>▼ When local altimeter setting not received, procedure NA. ▲ NA DME/DME RNP-0.3 NA. Helicopter visibility reduction below ¾ SM NA.</p>	<p>MISSED APPROACH: Climb to 5700 direct DIPBA and on track 047° to PETEZ and hold, continue climb-in-hold to 5700.</p>
---	--

ASOS 135.575	SEATTLE CENTER 123.95 290.55	LEWISTON TOWER ★ 119.4 (CTAF) 0 318.8	GND CON 121.9	UNICOM 122.95
------------------------	--	---	-------------------------	-------------------------



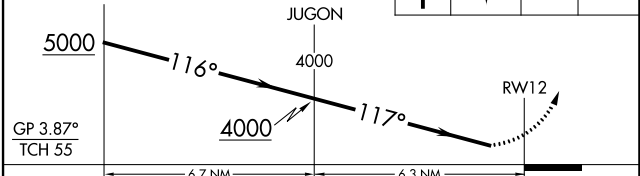
ELEV 1442	D	TDZE 1415
------------------	----------	------------------



REIL Rwy 8 **1**
REIL Rwy 12
HIRL Rwy 8-26
MIRL Rwy 12-30

VGSI and RNAV glidepath not coincident (VGSI Angle 3.00/TCH 40).

5700	DIPBA	tr 047°	PETEZ
------	-------	---------	-------



CATEGORY	A	B	C	D
LPV DA	1793-1	378 (400-1)		NA

NW-1, 26 DEC 2024 to 23 JAN 2025

NW-1, 26 DEC 2024 to 23 JAN 2025