

WAAS CH <b>97600</b> <b>W08A</b>	APP CRS <b>084°</b>	Rwy Ldg TDZE <b>1440</b> Apt Elev <b>1442</b>	<b>6511</b>
--	------------------------	---	-------------

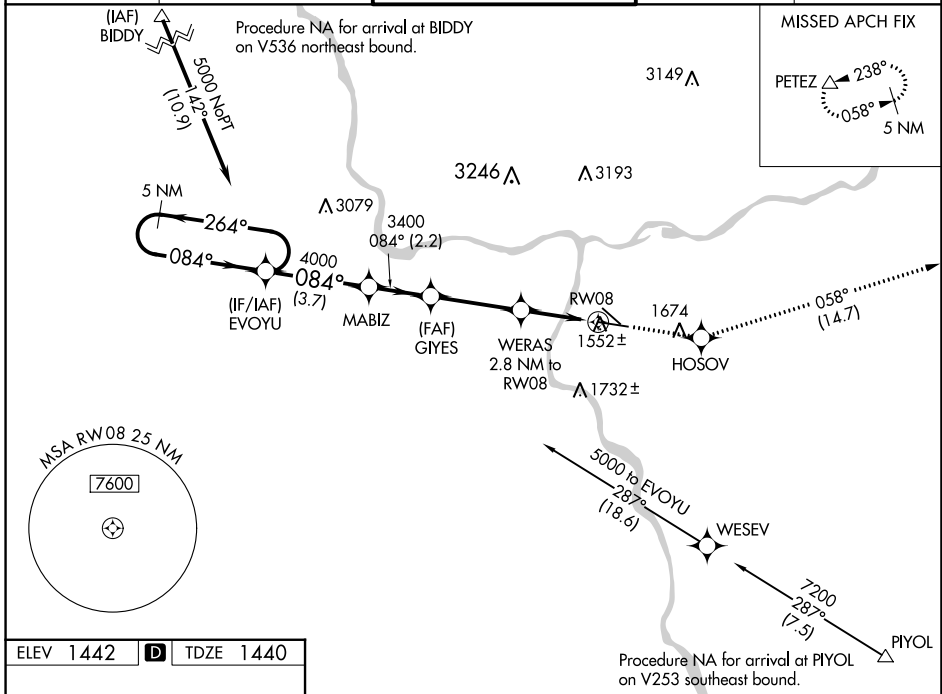
# RNAV (GPS) Y RWY 8

LEWISTON/NEZ PERCE COUNTY (LWS)

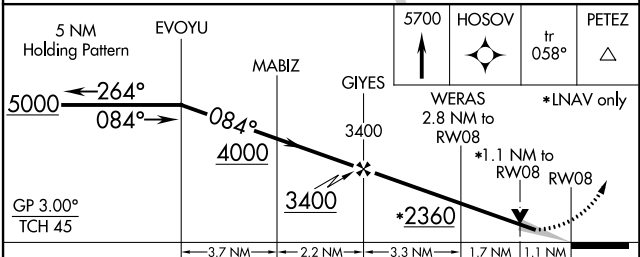
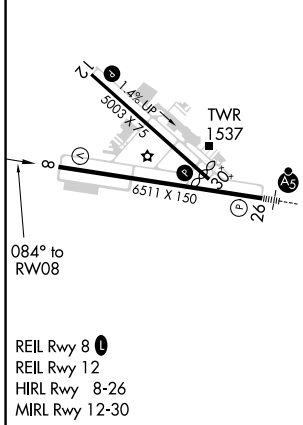
**⚠** For uncompensated Baro-VNAV systems, LNAV/VNAV NA below -1.4°C (7°F) or above 34°C (93°F). DME/DME RNP-0.3 NA.

**MISSED APPROACH:** Climb to 5700 direct HOSOVO and on track 058° to PETEZ and hold, continue climb-in-hold to 5700.

ASOS <b>135.575</b>	SEATTLE CENTER <b>123.95 290.55</b>	LEWISTON TOWER ★ <b>119.4 (CTAF) 0 318.8</b>	GND CON <b>121.9</b>	UNICOM <b>122.95</b>
------------------------	--	---	-------------------------	-------------------------



ELEV <b>1442</b>	<b>D</b>	TDZE <b>1440</b>
------------------	----------	------------------



CATEGORY	A	B	C	D
LPV DA	1690- <sup>3</sup> / <sub>4</sub> 250 (300- <sup>3</sup> / <sub>4</sub> )			
LNAV/VNAV DA	1736-1 296 (300-1)			
LNAV MDA	1820-1	380 (400-1)	1820-1 <sup>1</sup> / <sub>8</sub>	380 (400-1 <sup>1</sup> / <sub>8</sub> )
CIRCLING	2000-1	558 (600-1)	2280-2 <sup>1</sup> / <sub>2</sub> 838 (900-2 <sup>1</sup> / <sub>2</sub> )	2500-3 1058 (1100-3)

NW-1, 26 DEC 2024 to 23 JAN 2025

NW-1, 26 DEC 2024 to 23 JAN 2025