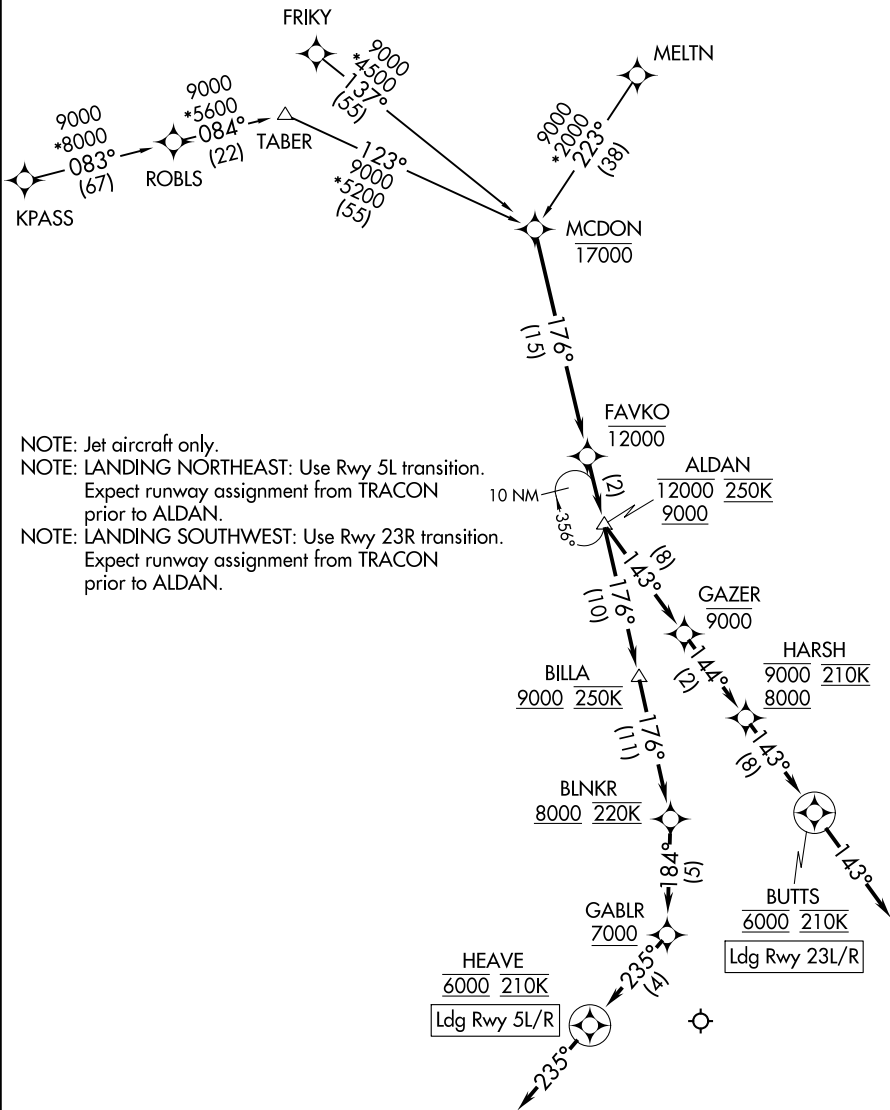


# ALDAN FOUR ARRIVAL (RNAV)

RALEIGH APP CON  
127.675 307.9  
D-ATIS  
123.8

RNAV 1 - DME/DME IRU or GPS.  
RADAR required.



NOTE: Jet aircraft only.  
 NOTE: LANDING NORTHEAST: Use Rwy 5L transition. Expect runway assignment from TRACON prior to ALDAN.  
 NOTE: LANDING SOUTHWEST: Use Rwy 23R transition. Expect runway assignment from TRACON prior to ALDAN.

(CONTINUED ON FOLLOWING PAGE)

NOTE: Chart not to scale.

# ALDAN FOUR ARRIVAL (RNAV)

(MCDON.ALDAN4) 25JAN24

RALEIGH/DURHAM, NORTH CAROLINA  
RALEIGH-DURHAM INTL (RDU)

SE-2, 26 DEC 2024 to 23 JAN 2025

SE-2, 26 DEC 2024 to 23 JAN 2025