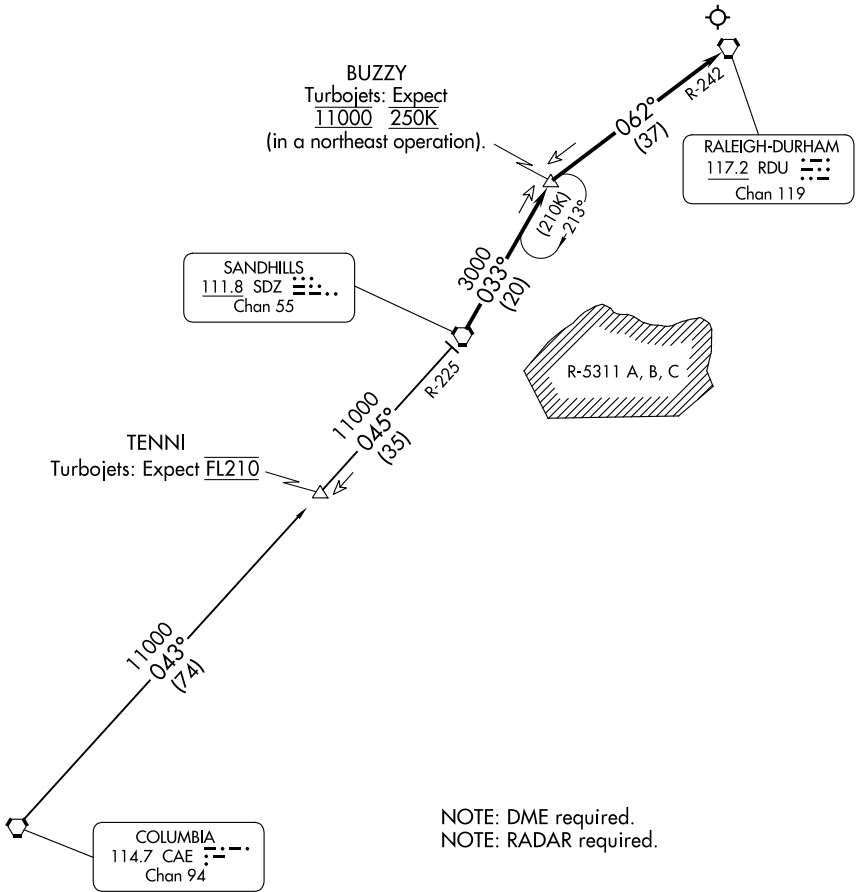


BUZZY ONE ARRIVAL

RALEIGH APP CON
127.675 307.9
D-ATIS
123.8



SE-2, 26 DEC 2024 to 23 JAN 2025

SE-2, 26 DEC 2024 to 23 JAN 2025

NOTE: DME required.
NOTE: RADAR required.

NOTE: Chart not to scale.

ARRIVAL ROUTE DESCRIPTION

COLUMBIA TRANSITION (CAE.BUZZY1): From over CAE VORTAC on CAE R-043 and SDZ R-225 to SDZ VORTAC, then on SDZ R-033 to BUZZY.

... Thence on RALEIGH/DURHAM VORTAC R-242 to RDU. Expect RADAR vectors to final approach course after BUZZY.