

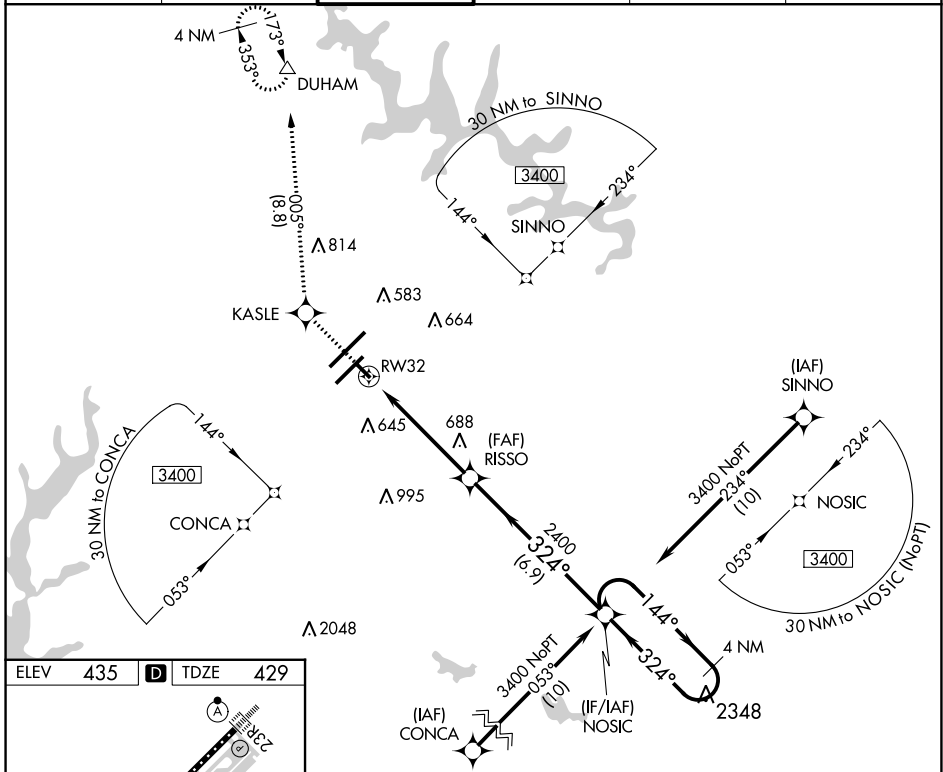
APP CRS	Rwy Idg	3570
324°	TDZE	429
	Apt Elev	435

RNAV (GPS) RWY 32

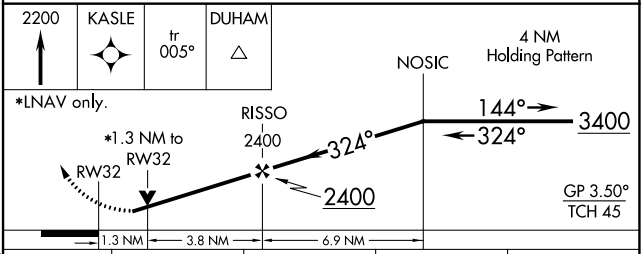
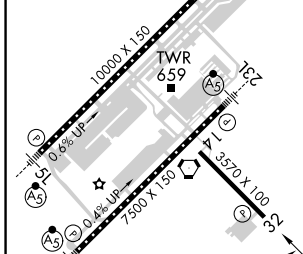
RALEIGH-DURHAM INTL (RDU)

RNP APCH.	Rwy 32 helicopter visibility reduction below 3/4 SM NA. Baro-VNAV NA below -15°C (5°F) or above 48°C (118°F).	MISSED APPROACH: Climb to 2200 direct KASLE and on track 005° to DUHAM and hold.
-----------	--	--

D-ATIS	RALEIGH APP CON	RALEIGH TOWER	GND CON	CLNC DEL	CPDLC
123.8	127.675 307.9	127.45 257.8	121.9 348.6	120.1	



ELEV	435	D	TDZE	429
------	------------	----------	------	------------



CATEGORY	A	B	C	D
LNNAV/VNAV	DA	820-1¼ 391 (400-1¼)		NA
LNNAV MDA	1000-1	571 (600-1)	1000-1½ 571 (600-1½)	NA
C CIRCLING	1000-1¼	565 (600-1¼)	1040-1¾ 605 (700-1¾)	NA

REIL Rwy 32
 MIRL Rwy 14-32
 HIRL Rwys 5R-23L and 5L-23R
 TDZ/CL Rwys 23R, 23L and 5L

RALEIGH/DURHAM, NORTH CAROLINA
 Orig-A 24MAY18

35°53'N-78°47'W

RALEIGH-DURHAM INTL (RDU)

RNAV (GPS) RWY 32

SE-2, 26 DEC 2024 to 23 JAN 2025

SE-2, 26 DEC 2024 to 23 JAN 2025