

# RALEIGH ONE DEPARTURE

D-ATIS  
123.8  
CLNC DEL  
120.1  
CPDLC  
RALEIGH DEP CON  
125.3 353.675 (055°-229°)  
132.35 256.9 (230°-054°)

**TOP ALTITUDE:  
AS ASSIGNED BY ATC**

NOTE: RADAR required.  
NOTE: Propeller aircraft only.

SOUTH BOSTON  
110.4 SBV  
Chan 41

FLAT ROCK  
113.3 FAK  
Chan 80

NORTH DEPARTURE  
132.35 256.9

TAR RIVER  
117.8 TYI  
Chan 125

SOUTH DEPARTURE  
125.3 353.675

GREENSBORO  
116.2 GSO  
Chan 109

LIBERTY  
113.0 LIB  
Chan 77

RALEIGH-DURHAM  
117.2 RDU  
Chan 119

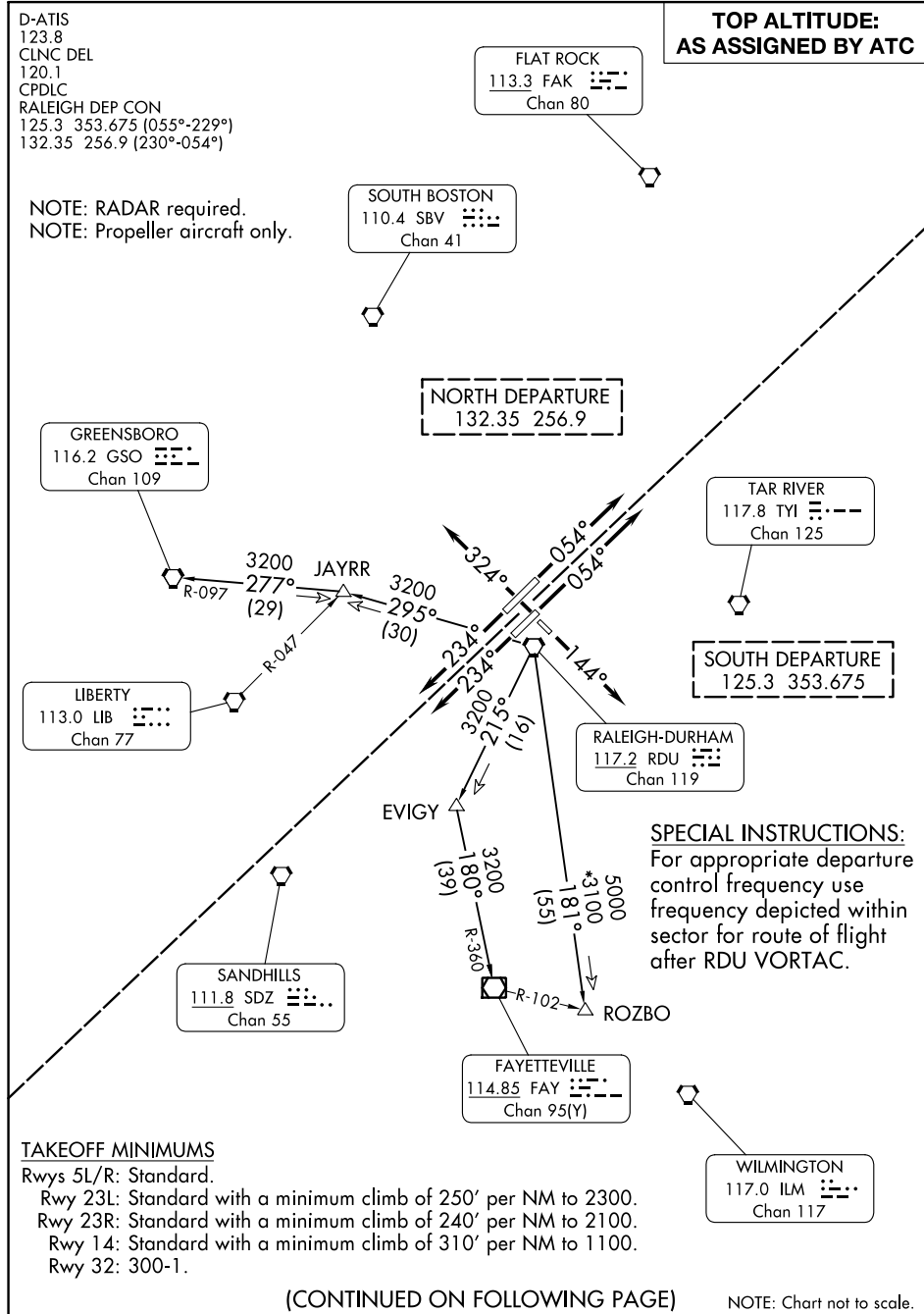
SANDHILLS  
111.8 SDZ  
Chan 55

FAYETTEVILLE  
114.85 FAY  
Chan 95(Y)

WILMINGTON  
117.0 ILM  
Chan 117

SE-2, 26 DEC 2024 to 23 JAN 2025

SE-2, 26 DEC 2024 to 23 JAN 2025



**SPECIAL INSTRUCTIONS:**  
For appropriate departure control frequency use frequency depicted within sector for route of flight after RDU VORTAC.

**TAKEOFF MINIMUMS**  
Rwys 5L/R: Standard.  
Rwy 23L: Standard with a minimum climb of 250' per NM to 2300.  
Rwy 23R: Standard with a minimum climb of 240' per NM to 2100.  
Rwy 14: Standard with a minimum climb of 310' per NM to 1100.  
Rwy 32: 300-1.

(CONTINUED ON FOLLOWING PAGE)

NOTE: Chart not to scale.