

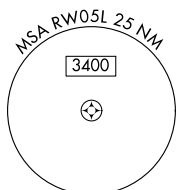
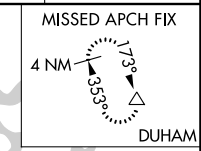
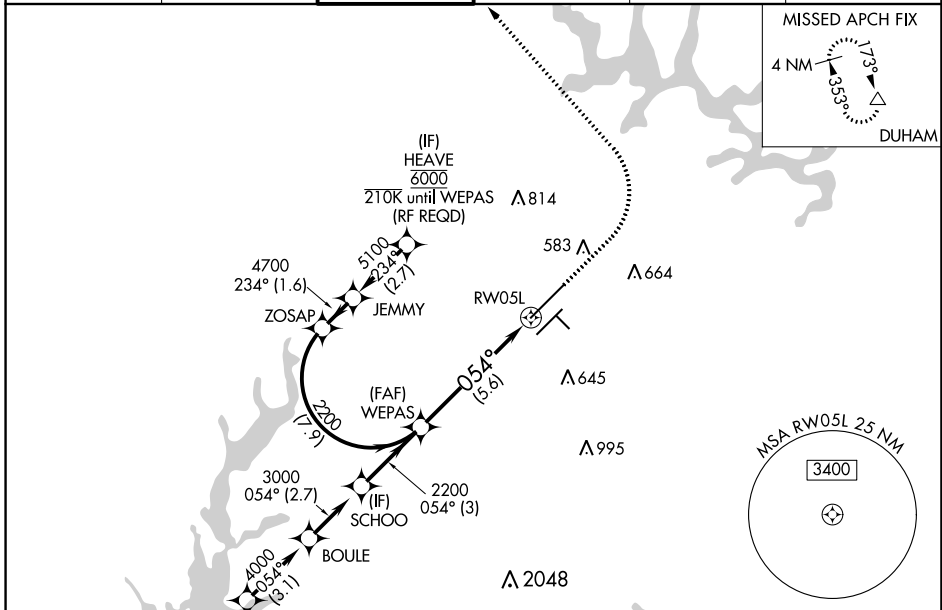
APP CRS	Rwy Idg	10000
054°	TDZE	384
	Apt Elev	435

RNAV (RNP) Z RWY 5L

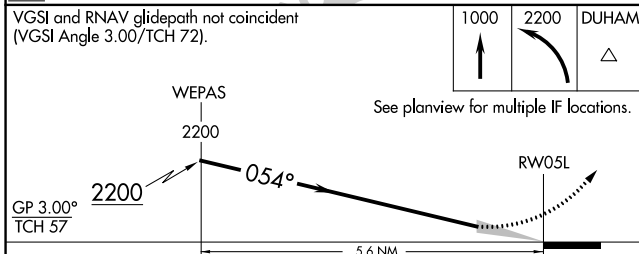
RALEIGH-DURHAM INTL (RDU)

RNP AR APCH-GPS.	MALSR 	MISSED APPROACH: Climb to 1000 then climbing left turn to 2200 direct DUHAM and hold.
<p>▼ For uncompensated Baro-VNAV systems, procedure NA below -1°C or above 54°C. Simultaneous approach authorized, except for arrivals at HEAVE. For inop ALS, increase RNP 0.10 all Cats visibility to RVR 4500.</p>		

D-ATIS 123.8	RALEIGH APP CON 127.675 307.9	RALEIGH TOWER 127.45 257.8	GND CON 121.9 348.6	CLNC DEL 120.1	CPDLC
------------------------	---	--------------------------------------	-------------------------------	--------------------------	-------



(IAF) OTOTOS 6000 210K	(IAF) CHWDR 210K	(IAF) BOULE	(IF) SCHOO 2200 054° (3)	(FAF) WEPAS	(IF) JEMMY	(IF) HEAVE 6000 210K until WEPAS (RF REQD)
---------------------------	---------------------	-------------	-----------------------------	-------------	------------	--



ELEV 435	D TDZE 384
REIL Rwy 32	MIRL Rwy 14-32
HIRL Rws 5R-23L and 5L-23R	
TDZ/CL Rws 5L, 23L, and 23R	

RALEIGH/DURHAM, NORTH CAROLINA
Amdt 3 25FEB21

RALEIGH-DURHAM INTL (RDU)
RNAV (RNP) Z RWY 5L

35°53'N-78°47'W

SE-2, 26 DEC 2024 to 23 JAN 2025

SE-2, 26 DEC 2024 to 23 JAN 2025

AUTHORIZATION REQUIRED