

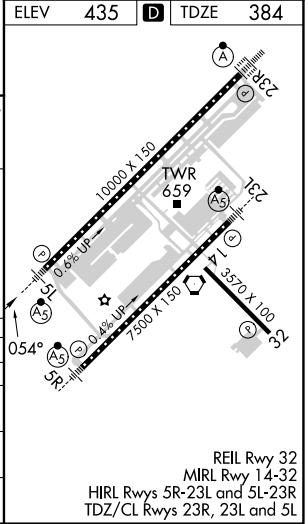
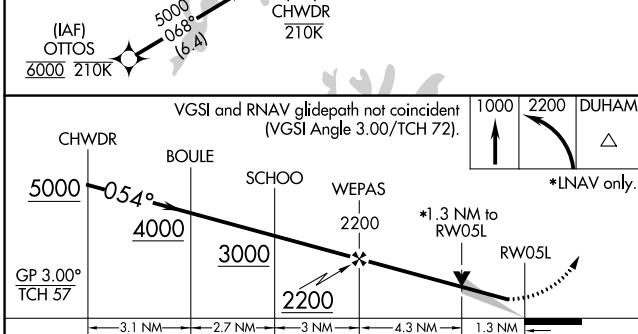
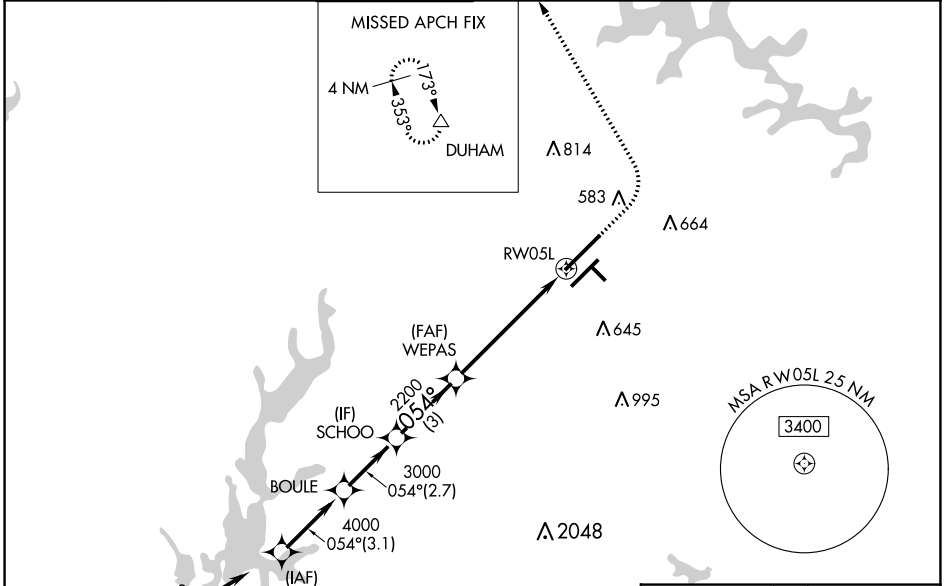
WAAS CH <b>48813</b> <b>W05A</b>	APP CRS <b>054°</b>	Rwy Idg <b>10000</b> TDZE <b>384</b> Apt Elev <b>435</b>
--	------------------------	--

# RNAV (GPS) Y RWY 5L

RALEIGH-DURHAM INTL (RDU)

RNP APCH-GPS.		MALSR	MISSED APPROACH: Climb to 1000 then climbing left turn to 2200 direct DUHAM and hold.
<p>⚠ Simultaneous approach authorized. LNAV procedure NA during simultaneous operations. For uncompensated Baro-VNAV systems, LNAV/VNAV NA below -12°C or above 54°C. For inop ALS, increase LNAV/VNAV all Cats visibility to RVR 5500. Use of FD or AP required during simultaneous operations.</p>			

D-ATIS <b>123.8</b>	RALEIGH APP CON <b>127.675 307.9</b>	RALEIGH TOWER <b>127.45 257.8</b>	GND CON <b>121.9 348.6</b>	CLNC DEL <b>120.1</b>	CPDLC
------------------------	---	--------------------------------------	-------------------------------	--------------------------	-------



CATEGORY	A	B	C	D
LPV DA		598/18	214 (200-1/2)	
LNAV/VNAV DA		748/35	364 (400-5/8)	
LNAV MDA	840/24	456 (500-1/2)	840/45	456 (500-7/8)
CIRCLING	960-1	525 (600-1)	1020-1 1/2 585 (600-1/2)	1180-2 1/2 745 (800-2/2)

SE-2, 26 DEC 2024 to 23 JAN 2025

SE-2, 26 DEC 2024 to 23 JAN 2025