

(TAQLE.TAQLE2) 23278

AL-516 (FAA)

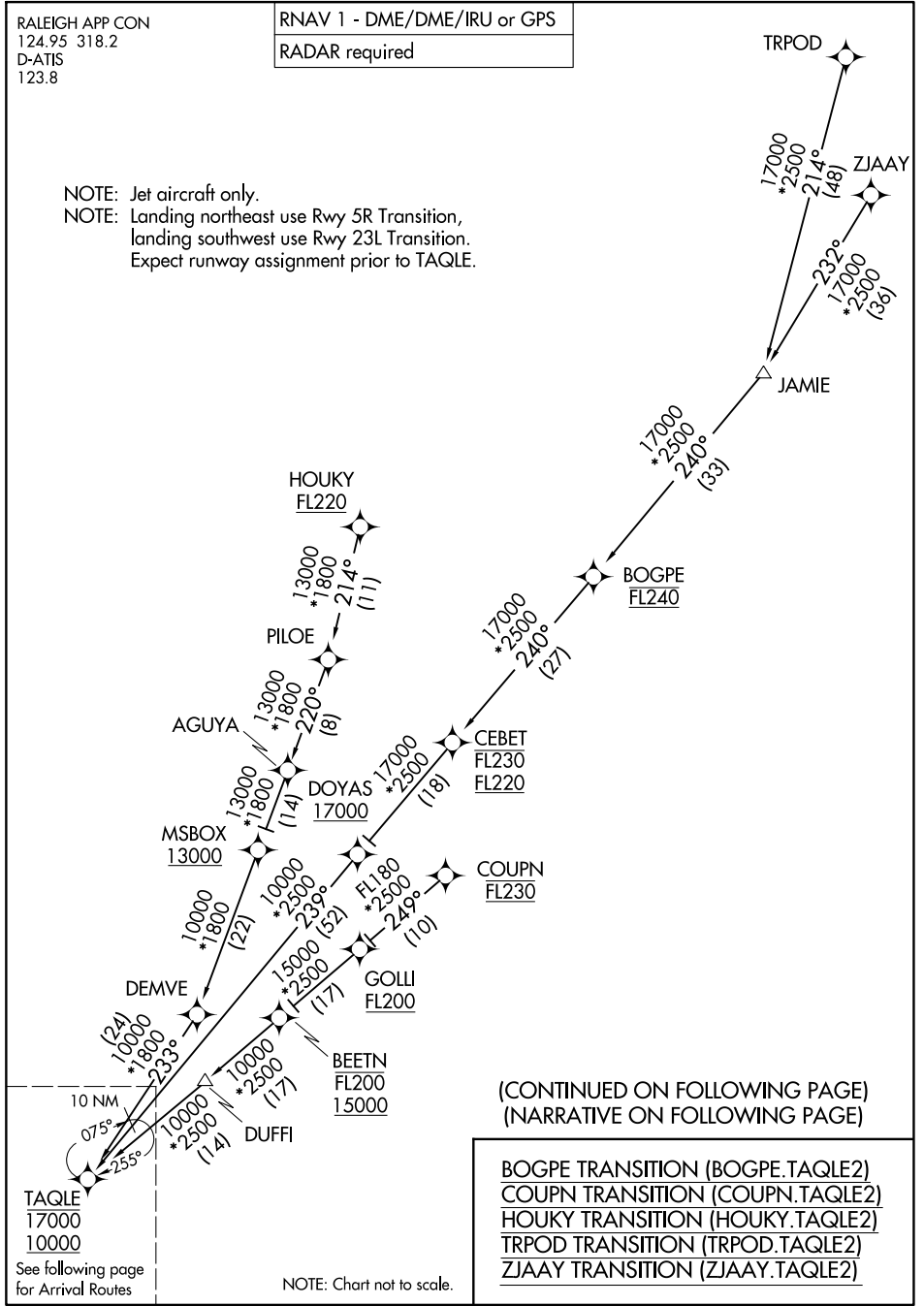
RALEIGH-DURHAM INTL (RDU)  
RALEIGH/DURHAM, NORTH CAROLINA

# TAQLE TWO ARRIVAL (RNAV) Transition Routes

RALEIGH APP CON  
124.95 318.2  
D-ATIS  
123.8

RNAV 1 - DME/DME/IRU or GPS
RADAR required

NOTE: Jet aircraft only.  
 NOTE: Landing northeast use Rwy 5R Transition,  
 landing southwest use Rwy 23L Transition.  
 Expect runway assignment prior to TAQLE.



(CONTINUED ON FOLLOWING PAGE)  
 (NARRATIVE ON FOLLOWING PAGE)

- BOGPE TRANSITION (BOGPE.TAQLE2)
- COUPN TRANSITION (COUPN.TAQLE2)
- HOUKY TRANSITION (HOUKY.TAQLE2)
- TRPOD TRANSITION (TRPOD.TAQLE2)
- ZJAAY TRANSITION (ZJAAY.TAQLE2)

NOTE: Chart not to scale.

SE-2, 26 DEC 2024 to 23 JAN 2025

SE-2, 26 DEC 2024 to 23 JAN 2025

**TAQLE TWO ARRIVAL (RNAV) Transition Routes**  
 (TAQLE.TAQLE2) 05OCT23

RALEIGH/DURHAM, NORTH CAROLINA  
 RALEIGH-DURHAM INTL (RDU)