

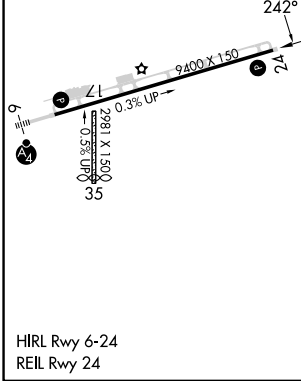
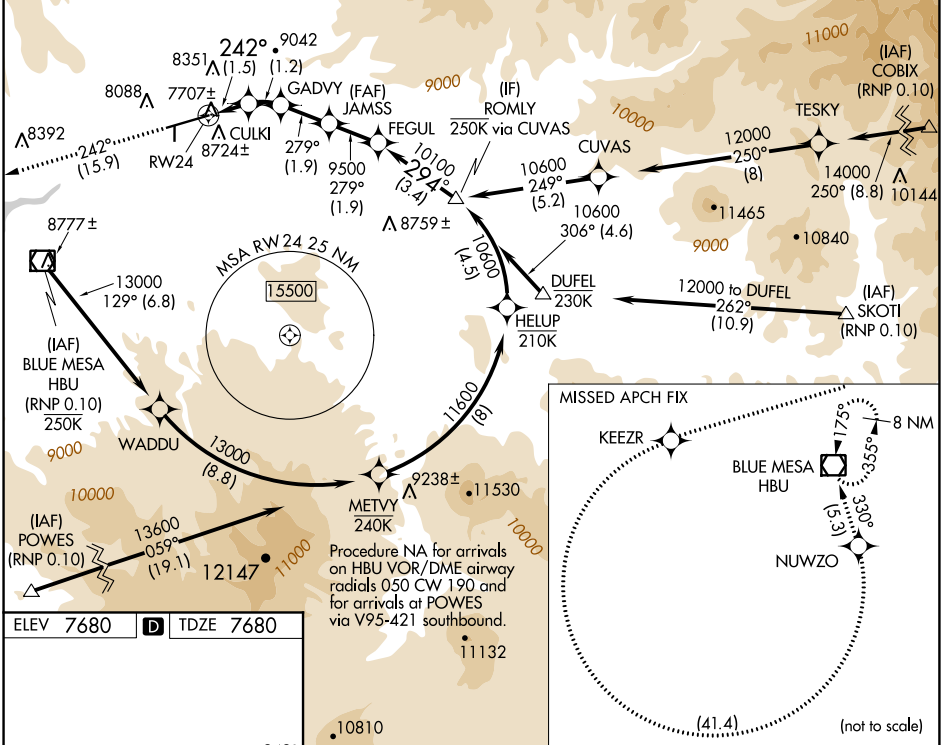
APP CRS	Rwy Idg	9400
242°	TDZE	7680
	Apt Elev	7680

RNAV (RNP) RWY 24

GUNNISON-CRESTED BUTTE RGNL (GUC)

RNP AR APCH - GPS, RF, min RNP 0.10. Authorization required.	MISSED APPROACH: Climb to 14000 on track 242° to KEEZR, and left turn to NUWZO, and on track 330° to HBU VOR/DME and hold. Missed approach requires minimum climb of 425 feet per NM to 9000.
<p>▼ When local altimeter setting not received, procedure NA.</p> <p>❄ -26°C Procedure NA for aircraft with wingspan greater than 136 feet. For uncompensated Baro-VNAV systems, procedure NA below -29°C or above 24°C.</p>	

AWOS-3PT 135.075	DENVER CENTER 124.5 350.25	UNICOM 122.7 (CTAF) 0
----------------------------	--------------------------------------	---------------------------------



14000	KEEZR	NUWZO	VGSI and RNAV glidepath not coincident (VGSI Angle 3.60/TCH 71).	
tr 242°			JAMSS	ROMLY
	CULKI	GADVY	FEGUL	
	8320	8776	9500	10600
			279°	294°
			9500	10100
				Procedure Turn NA GP 3.60° TCH 65
			1.5 NM	1.2 NM
			1.9 NM	1.9 NM
			3.4 NM	
CATEGORY	A	B	C	D
RNP 0.10 DA	8029-1 349 (400-1)			NA
AUTHORIZATION REQUIRED				

SW-1, 26 DEC 2024 to 23 JAN 2025

SW-1, 26 DEC 2024 to 23 JAN 2025