

WAAS CH 82316 W16A	APP CRS 165°	Rwy Idg 5070 TDZE 15 Apt Elev 15
--	------------------------	---

RNAV (GPS) RWY 16

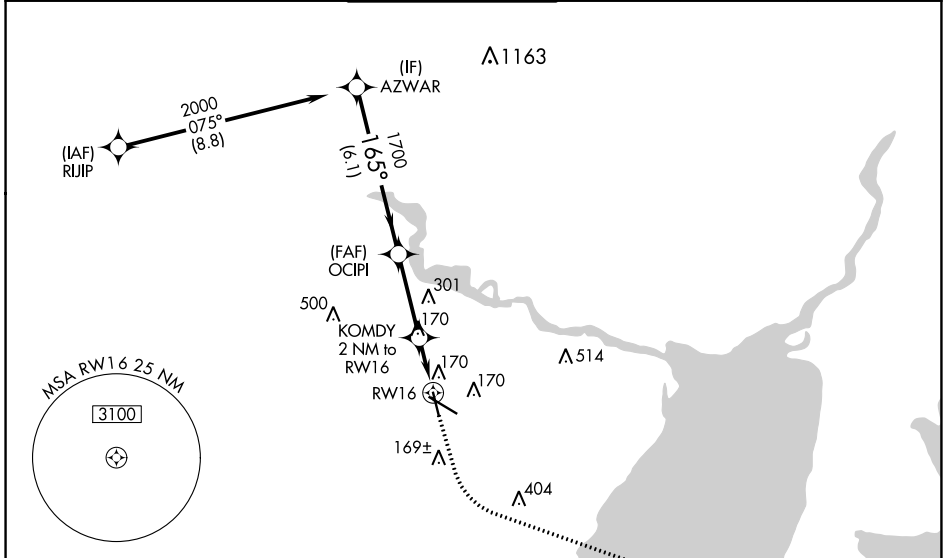
JACK BROOKS RGNL (BPT)

RNP APCH - GPS.

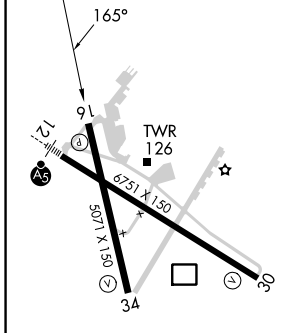
⚠ For uncompensated Baro-VNAV systems, LNAV/VNAV NA below -4°C or above 54°C. Baro-VNAV and VDP NA when using Orange County altimeter setting. Rwy 16 helicopter visibility reduction below 3/4 SM NA. When local altimeter setting not received, use Orange County altimeter setting; increase LPV DA to 307 feet and all visibilities 1/2 SM; increase LNAV/VNAV DA to 363 feet and all visibilities 1/2 SM; increase all MDAs 40 feet and LNAV visibility Cat C/D/E 1/4 SM.

MISSED APPROACH: Climb to 500 then climbing left turn to 3000 direct MARSAs and hold.

ATIS 126.3	HOUSTON APP CON 121.3 377.1	BEAUMONT TOWER * 119.5 (CTAF) 0	GND CON 124.85	CLNC DEL 118.3	UNICOM 122.95
----------------------	---------------------------------------	---	--------------------------	--------------------------	-------------------------



ELEV 15	D	TDZE 15
----------------	----------	----------------



REIL Rwy 16, 30 and 34 0
HIRL Rwy 12-30, 16-34 0

	500	3000	MARSA
	↑	↶	△
AZWAR	OCIPI	KOMDY	
2000	1700	2 NM to RWY 16	
GP 3.00°		1.1 NM to RWY 16	
TCH 53		0.9 NM	1.1 NM
	6.1 NM	3.1 NM	0.9 NM
CATEGORY	A	B	C
LPV DA		275-3/4	260 (300-3/4)
LNAV/VNAV DA		331-7/8	316 (400-7/8)
LNAV MDA	420-1	405 (500-1)	420-1 1/8 405 (500-1 1/8)

SC-5, 26 DEC 2024 to 23 JAN 2025

SC-5, 26 DEC 2024 to 23 JAN 2025