

WAAS CH 69216 W30A	APP CRS 300°	Rwy Idg TDZE Apt Elev	6751 12 15
--	------------------------	-----------------------------	---------------------------------------

RNAV (GPS) RWY 30

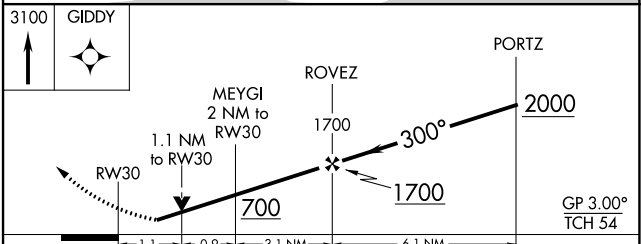
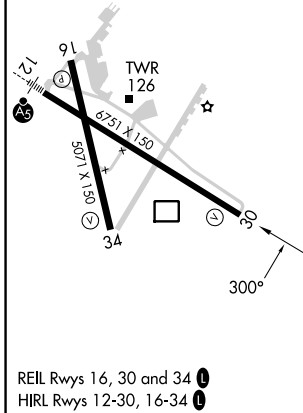
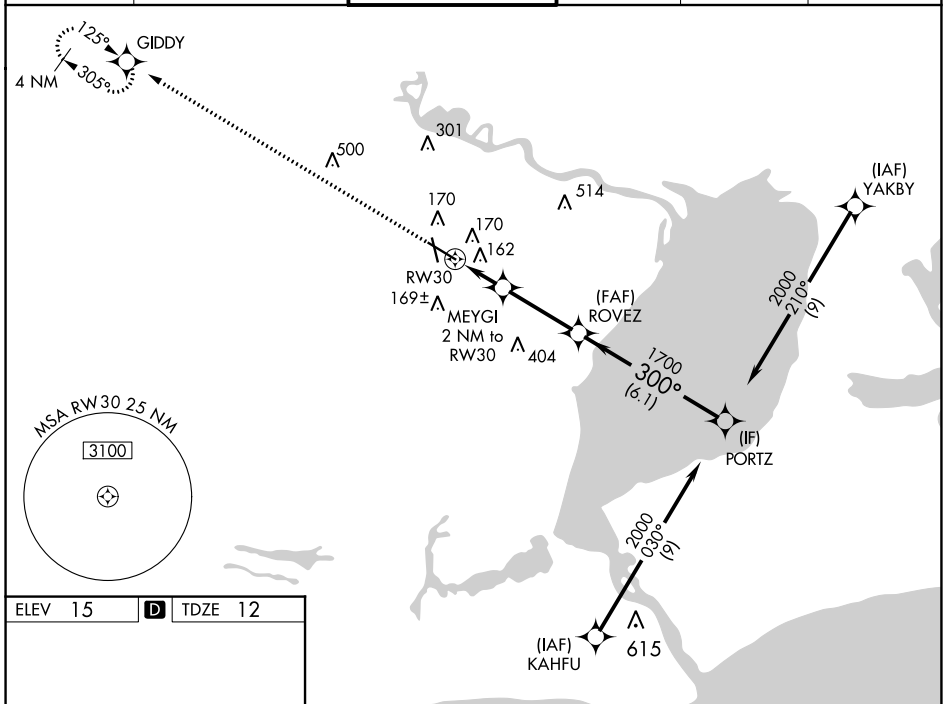
JACK BROOKS RGNL (BPT')

RNP APCH - GPS.

⚠ For uncompensated Baro-VNAV systems, LNAV/VNAV NA below -4°C or above 54°C. Rwy 30 helicopter visibility reduction below 3/4 SM NA. Baro-VNAV and VDP NA when using Orange County altimeter setting. When local altimeter setting not received, use Orange County altimeter setting: increase LPV DA to 294 feet and all visibilities 1/2 SM. Increase LNAV/VNAV DA to 355 feet and all visibilities 1/2 SM. Increase all MDAs 40 feet and LNAV visibility Cat C/D/E 1/4 SM.

MISSED APPROACH: Climb to 3100 direct GIDDY and hold, continue climb-in-hold to 3100.

ATIS 126.3	HOUSTON APP CON 121.3 377.1	BEAUMONT TOWER* 119.5 (CTAF)	GND CON 124.85	CLNC DEL 118.3	UNICOM 122.95
----------------------	---------------------------------------	--	--------------------------	--------------------------	-------------------------



CATEGORY	A	B	C	D	E
LPV DA		262-3/4	250 (300-3/4)		
LNAV/VNAV DA		323-7/8	311 (400-7/8)		
LNAV MDA	420-1	408 (500-1)	420-1 1/2	408 (500-1 1/2)	

SC-5, 26 DEC 2024 to 23 JAN 2025

SC-5, 26 DEC 2024 to 23 JAN 2025