

LOC/DME I-JQX 108.9 Chan 26	APP CRS 178°	Rwy Idg 6499 TDZE 965 Apt Elev 978
---	------------------------	---

ILS or LOC RWY 18

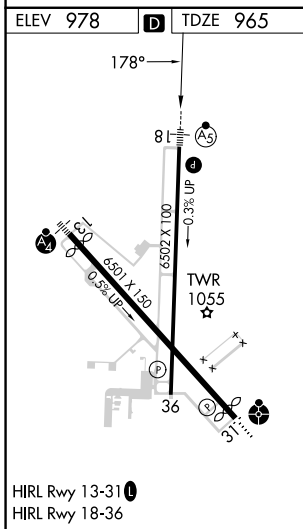
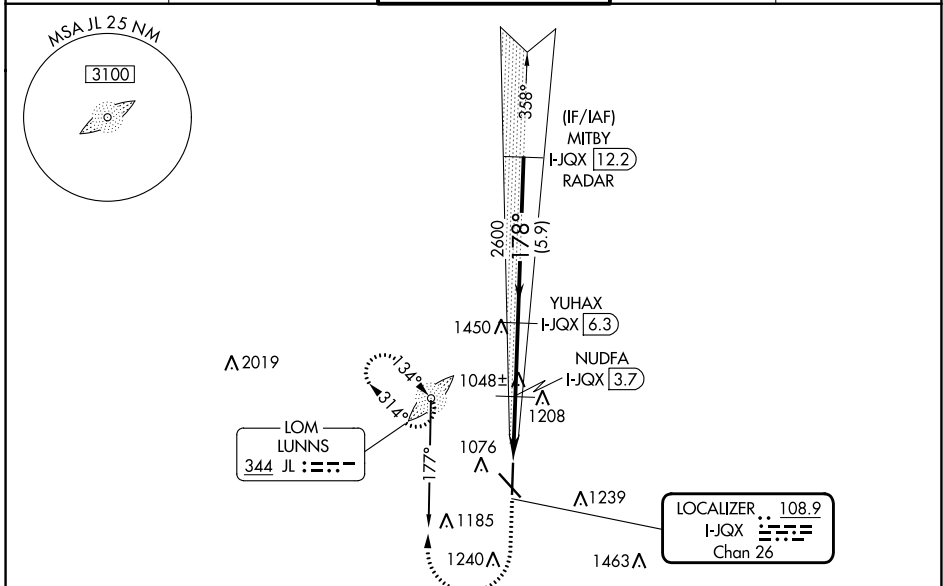
JOPLIN RGNL (JLN)

ADF required. DME required for LOC only. RADAR required for procedure entry.

⚠ For inop ALS, increase S-ILS 18# all Cats visibility to RVR 4500 and S-LOC 18 Cat C/D visibility to RVR 5500.

MALS MISSED APPROACH: Climb to 1460 then climbing right turn to 3100 on LUNNS LOM bearing 177° to LUNNS LOM and hold, continue climb-in-hold to 3100. S-ILS 18* missed approach requires minimum climb of 204 feet per NM to 2240. (If unable to meet climb gradient use S-ILS 18# minimums).

ATIS 120.85	KANSAS CITY CENTER 128.6 282.325	JOPLIN TOWER* 119.8 (CTAF) 0	GND CON 121.6	UNICOM 122.95
-----------------------	--	--	-------------------------	-------------------------



ELEV 978	D	TDZE 965				
1460	3100	JL	YUHAX I-JQX 6.3		MITBY I-JQX 12.2	
1760	2600	177°	NUDFA I-JQX 3.7	2600	3100	
1.1 NM	1.3 NM	2.6 NM	5.9 NM	GS 3.00° TCH 46		
CATEGORY	A	B	C	D		
S-ILS 18*	1165/24		200 (200-1/2)			
S-ILS 18#	1240/24		275 (300-1/2)			
S-LOC 18	1340/24	375 (400-1/2)		1340/35	375 (400-5/8)	
C CIRCLING	1420-1 442 (500-1)	1480-1 502 (600-1)	1540-1 3/4 562 (600-1 3/4)	1600-2 622 (700-2)		

NC-3, 26 DEC 2024 to 23 JAN 2025

NC-3, 26 DEC 2024 to 23 JAN 2025