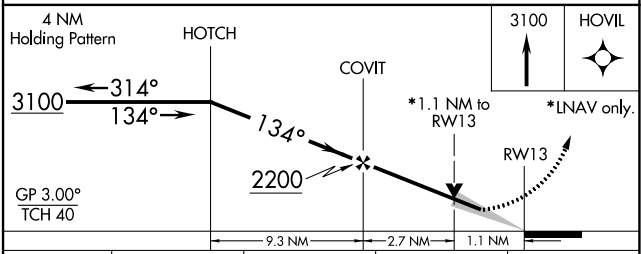
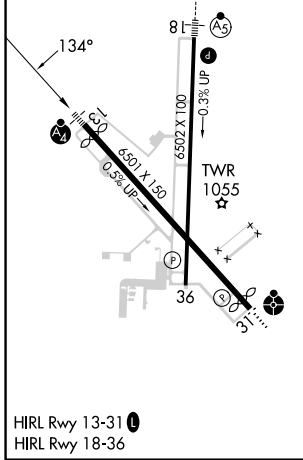
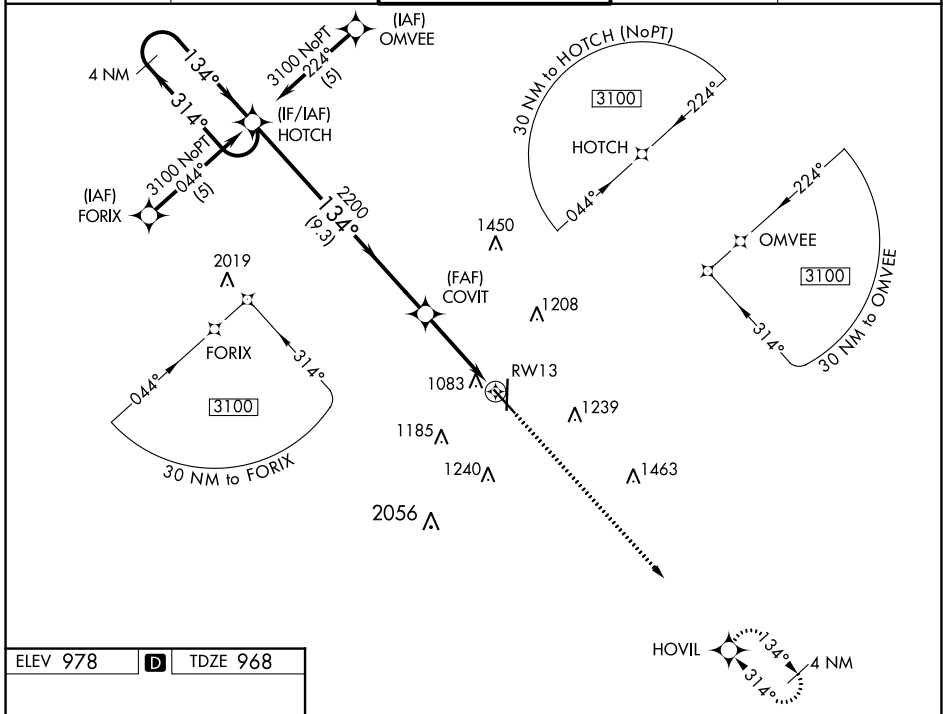


WAAS CH 90109 W13A	APP CRS 134°	Rwy Idg 5813 TDZE 968 Apt Elev 978
--	------------------------	---

RNAV (GPS) RWY 13

JOPLIN RGNL (JLN)

RNP APCH.		MALSF	MISSED APPROACH: Climb to 3100 direct HOVIL and hold.	
▼ MALSF (NSTD) 1368'. Baro-VNAV NA below -16°C (4°F). For inop MALSF, increase LPV Cats A/B/C visibility to 1.				
ATIS 120.85	KANSAS CITY CENTER 128.6 282.325	JOPLIN TOWER* 119.8 (CTAF) 0	GND CON 121.6	UNICOM 122.95



CATEGORY	A	B	C	D
LPV DA	1220-¾	252 (300-¾)		1220-1 252 (300-1)
LNAV/VNAV DA	1380-1¼	412 (400-1¼)		1380-1½ 412 (400-1½)
LNAV MDA	1340-¾	372 (400-¾)		1340-1 372 (400-1)
C CIRCLING	1500-1½	522 (600-1½)	1540-1½ 562 (600-1½)	1600-2 622 (700-2)

NC-3, 26 DEC 2024 to 23 JAN 2025

NC-3, 26 DEC 2024 to 23 JAN 2025