

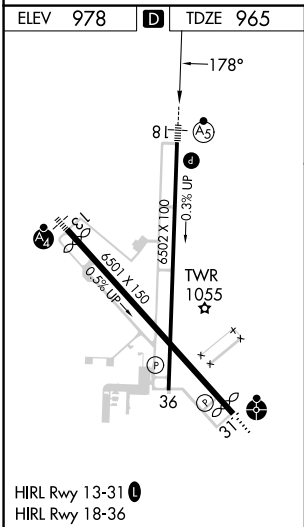
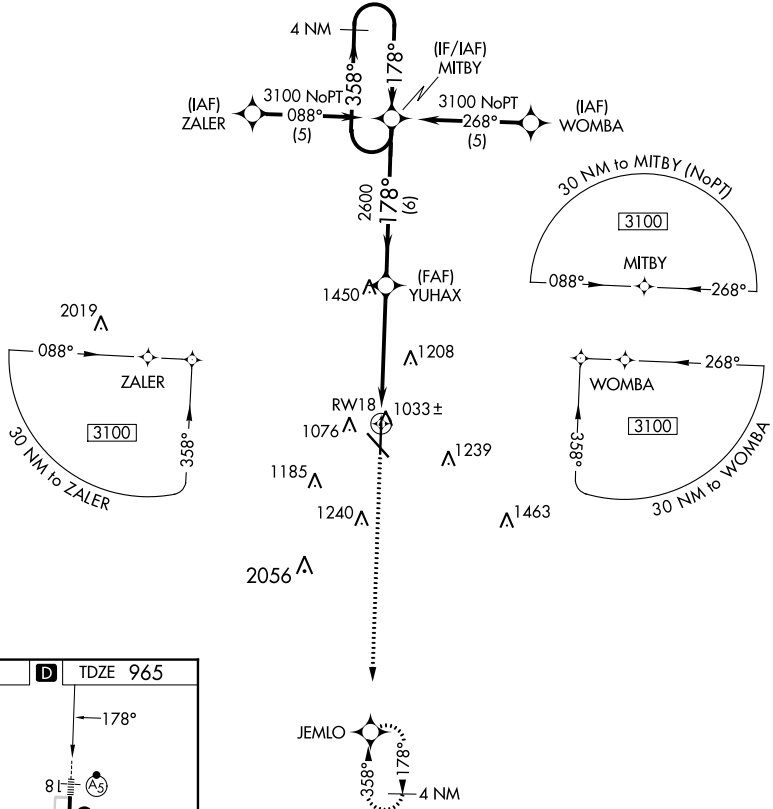
WAAS CH 97309 W18A	APP CRS 178°	Rwy Idg TDZE Apt Elev	6499 965 978
--	------------------------	-----------------------------	---

RNAV (GPS) RWY 18

JOPLIN RGNL (JLN)

RNP APCH.	MALSR	MISSED APPROACH: Climb to 3100 direct JEMLO and hold.
For uncompensated Baro-VNAV systems, procedure NA below -16°C (4°F) or above 54°C (130°F). For inoperative MALSR, increase LPV all Cats visibility to RVR 5000.		

ATIS 120.85	KANSAS CITY CENTER 128.6 282.325	JOPLIN TOWER * 119.8 (CTAF) 0	GND CON 121.6	UNICOM 122.95
-----------------------	--	--	-------------------------	-------------------------



3100	JEMLO	* LNAV only.	YUHAX	MITBY	4 NM Holding Pattern
	RWY 18	* 1.9 NM to RWY 18	2600	358°	3100
				178°	GP 3.00° TCH 46
CATEGORY	A	B	C	D	
LPV DA		1220/24	255 (300-½)		
LNAV/VNAV DA		1460/60	495 (500-1¼)		
LNAV MDA	1600/24	635 (700-½)	1600/60 635 (700-1¼)	1600-½ 635 (700-1½)	
CIRCLING		1600-1¾	622 (700-1¾)		1600-2 622 (700-2)

NC-3, 26 DEC 2024 to 23 JAN 2025

NC-3, 26 DEC 2024 to 23 JAN 2025