

SW-3, 26 DEC 2024 to 23 JAN 2025

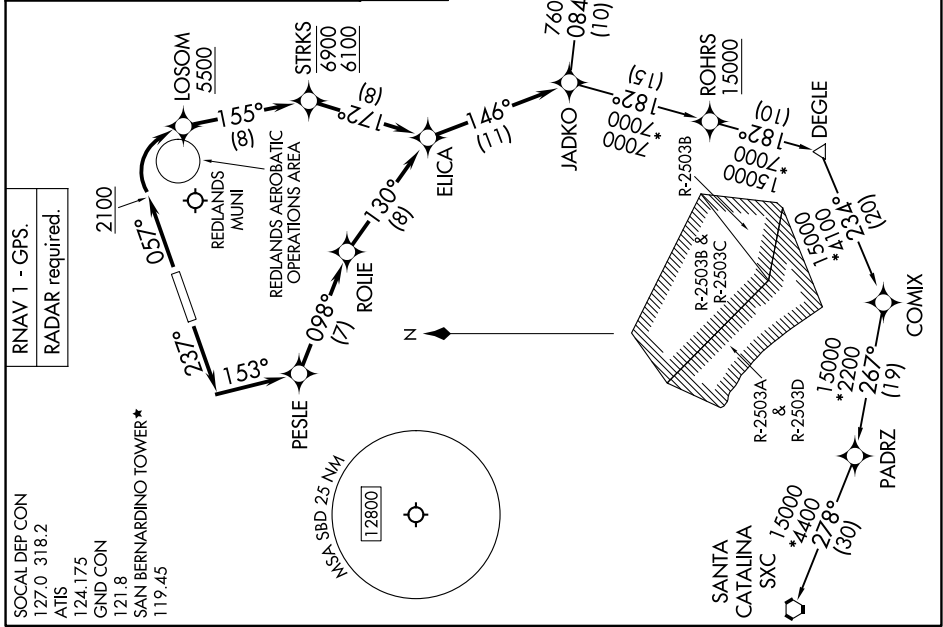
DEPARTURE ROUTE DESCRIPTION

TAKEOFF RUNWAY 6: Climb on heading 057° to 2100, then climbing right turn direct LOSOM to cross LOSOM at or above 5500, then on track 155° to cross STRKS between 6100 and 6900 then on track 172° to ELICA, thence. . . .

TAKEOFF RUNWAY 24: Climb on heading 237° to intercept course 153° to PESLE, then on track 098° to ROLIE, then on track 130° to ELICA, thence. . . . on track 146° to JADKO. Expect filled altitude 10 minutes after departure.

AVRRY TRANSITION (JADKO1.AVRRY)
MTBAL TRANSITION (JADKO1.MTBAL)
SANTA CATALINA TRANSITION (JADKO1.SXC)

**TOP ALTITUDE:
AVRRY and MTBAL TRANSITIONS: 14000;
SANTA CATALINA TRANSITION: 15000.**



SW-3, 26 DEC 2024 to 23 JAN 2025

NOTE: Chart not to scale.

TAKEOFF MINIMUMS
 Rwy 6: Standard with minimum climb of 602' per NM to 5800.
 Rwy 24: Standard with minimum climb of 439' per NM to 4100.

NOTE: Turbojet and turboprop aircraft only.
 NOTE: Rwy 6 departures maintain at or below 210K until leaving 3500.
 NOTE: Scheduled aerobatic activity beginning 4.5 NM east of Rwy 6 DER/ 2.7 NM west of LOSOM 3500 feet to 7500 feet MSL. 123.05.