

APP CRS <b>240°</b>	Rwy Idg <b>10000</b>
	TDZE <b>1159</b>
	Apt Elev <b>1159</b>

# RNAV (RNP) RWY 24

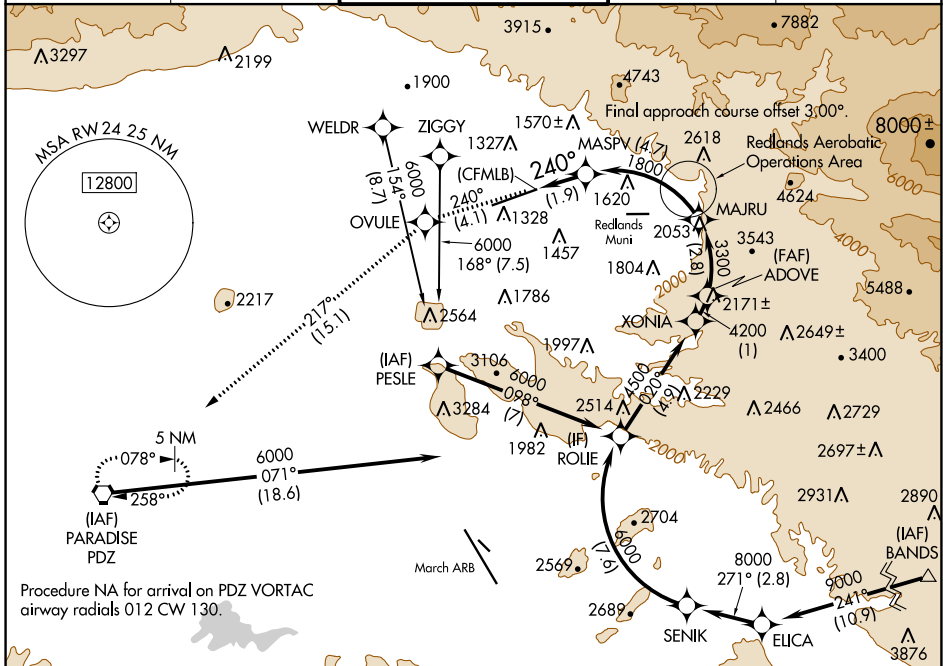
SAN BERNARDINO INTL (SBD)

RNP AR APCH - GPS, RF. Authorization required.

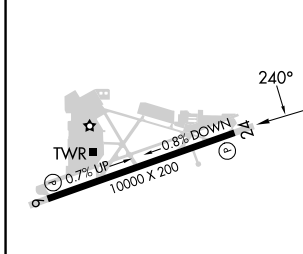
For uncompensated Baro-VNAV systems, procedure NA below 2°C or above 54°C.

MISSED APPROACH: Climb to 6000 on track 240° to OVULE and track 217° to PDZ VORTAC and hold, continue climb-in-hold to 6000.

D-ATIS <b>124.175</b>	SOCAL APP CON <b>127.0 318.2</b>	SAN BERNARDINO TOWER* <b>119.45 (CTAF) 0</b>	GND CON <b>121.8</b>	UNICOM <b>122.975</b>
--------------------------	-------------------------------------	-------------------------------------------------	-------------------------	--------------------------



ELEV 1159	<b>D</b> TDZE 1159
-----------	--------------------



6000	OVULE	tr 217°	PDZ	ROUJE
tr 240°				6000
	MAJRU	ADOVE	XONIA	
	3300	4200	4500	
	MAJRU	ADOVE	XONIA	
	3300	4200	4500	
	1.9 NM	4.7 NM	2.8 NM	1 NM
	4.9 NM			

CATEGORY	A	B	C	D
RNP 0.15 DA	1520/55 361 (400-1)			

**AUTHORIZATION REQUIRED**

SW-3, 26 DEC 2024 to 23 JAN 2025

SW-3, 26 DEC 2024 to 23 JAN 2025