

LOC I-VNY 111.3	APP CRS 164°	Rwy ldg TDZE Apt Elev 6569 793 802
---------------------------	------------------------	--

ILS Z RWY 16R

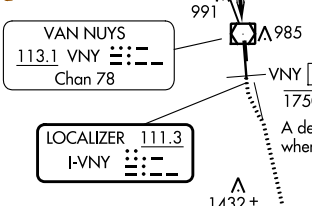
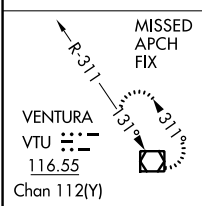
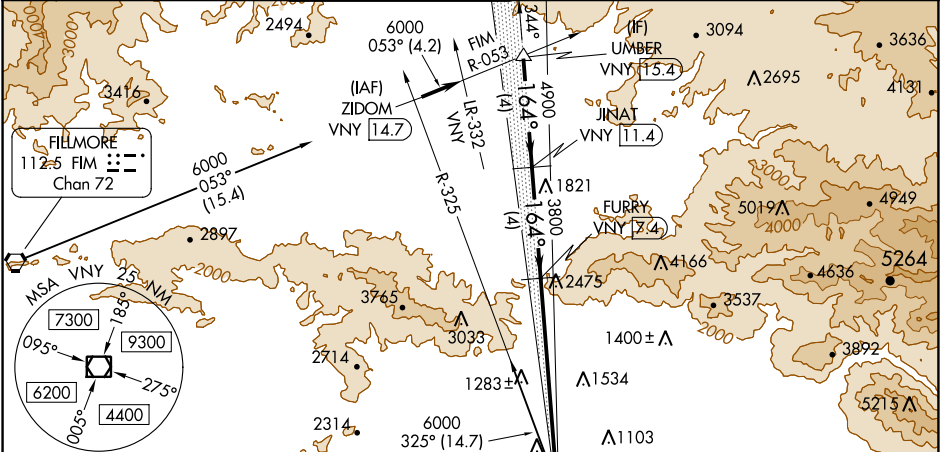
VAN NUYS (VNY)

⚠ DME required. RADAR required for monitoring of missed approach. When local altimeter setting not received, use Burbank altimeter setting and increase DA to 1114. Rwy 16R helicopter visibility reduction below RVR 4000 NA. For inop ALS, increase S-ILS 16R all Cats visibility to RVR 5000.

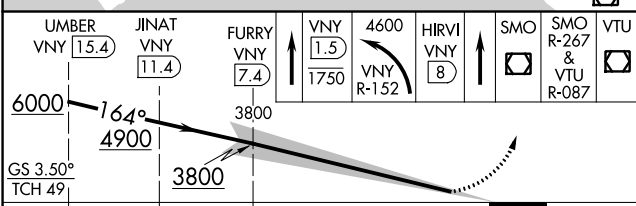
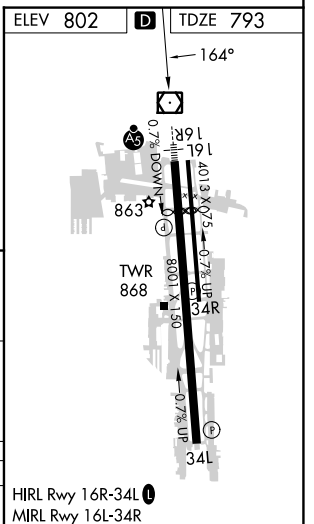
MALSRS **AS**

MISSED APPROACH: Climb to cross VNY 1.5 DME south of VNY VOR/DME at or below 1750 then climbing left turn to 4600 on VNY VOR/DME R-152 to HIRVI/VNY VOR/DME 8 DME, direct SMO VOR/DME then on SMO VOR/DME R-267 then on VTU VOR/DME R-087 to VTU VOR/DME and hold.

ATIS 127.55	SOCAL APP CON 120.4 360.6 (NORTH) 134.2 338.2 (WEST)	VAN NUYS TOWER ★ 119.3 (CTAF) 239.0	GND CON 121.7	CLNC DEL 126.6 239.0	CPDLC	UNICOM 122.95
-----------------------	--	---	-------------------------	--------------------------------	-------	-------------------------



A descent to at or below 1750 may be required when executing an early missed approach.



CATEGORY	A	B	C	D
S-ILS 16R		1095/40	302 (300-¾)	

SW-3, 26 DEC 2024 to 23 JAN 2025

SW-3, 26 DEC 2024 to 23 JAN 2025