

SPOKANE, WASHINGTON

# RNAV (GPS) RWY 23

APCH CRS	Rwy Idg	<b>13,899</b>
<b>231°</b>	TDZE	<b>2423</b>
	Arprt Elev	<b>2462</b>

- (USAF)

FAIRCHILD AFB (KSKA)

RNP APCH

ALSF-1

MISSED APPROACH: Climb to 3000, then climbing right turn to 7000 direct to KNOCK and hold, continue climb in hold to 7000.

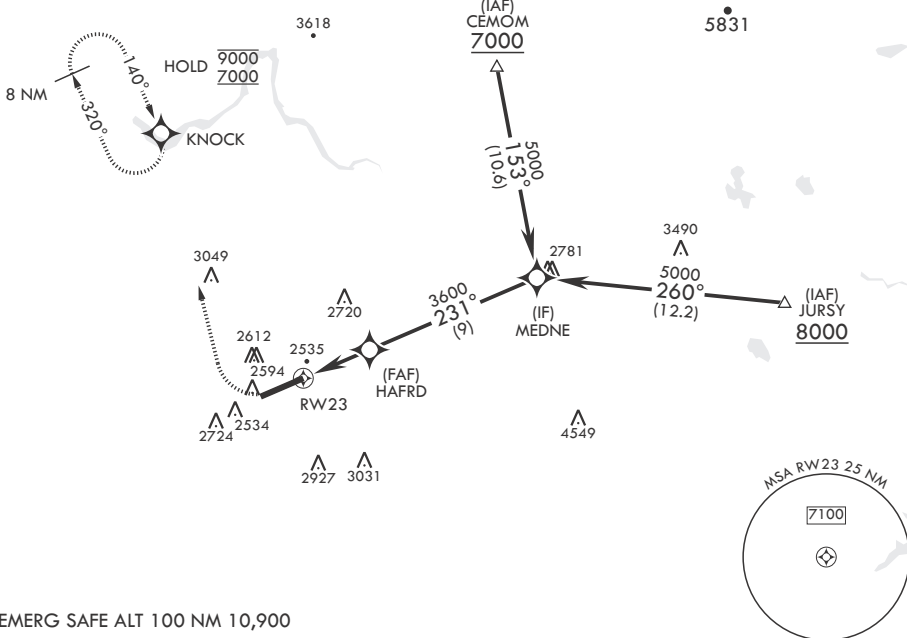
RADAR required for KNOCK holding.



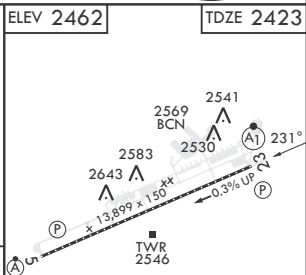
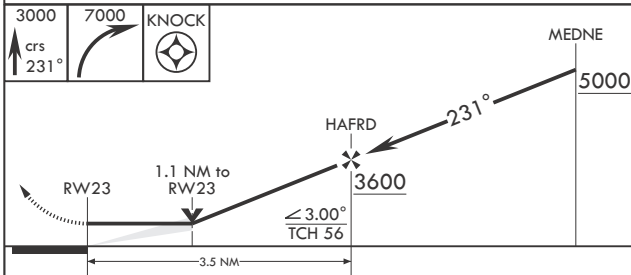
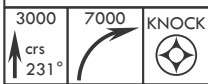
⚠ \* When ALS inop, increase CAT AB RVR to 55 and vis to 1 mile, CAT CDE vis to 1 1/4 miles.

ATIS <b>257.625</b>	SPOKANE APP CON <b>123.75 282.25 (208°-028°)</b> <b>133.35 263.0 (029°-207°)</b>	TOWER <b>120.35 233.7</b>	GND CON <b>123.6 275.8</b>
------------------------	--	------------------------------	-------------------------------

\*\* Circling S of Rwy 5-23 NA.



EMERG SAFE ALT 100 NM 10,900



CATEGORY	A	B	C	D	E
LNAV MDA*	2820/24	397 (400-½)	2820/35	397	(400-%)
CIRCLING**	2900-1 438 (500-1)	2920-1 458 (500-1)	3040-1½ 578 (600-1½)	3040-2 578 (600-2)	3600-3 1138 (1200-3)

HIRL all Rwys  
TDZL/CL Rwy 5

SPOKANE, WASHINGTON

47°37'N - 117°39'W

FAIRCHILD AFB (KSKA)

Amdt 2 03NOV22

# RNAV (GPS) RWY 23

NW-1, 26 DEC 2024 to 23 JAN 2025

NW-1, 26 DEC 2024 to 23 JAN 2025