

(SZAGI.SZAGI1) 24249

AL-556 (FAA)

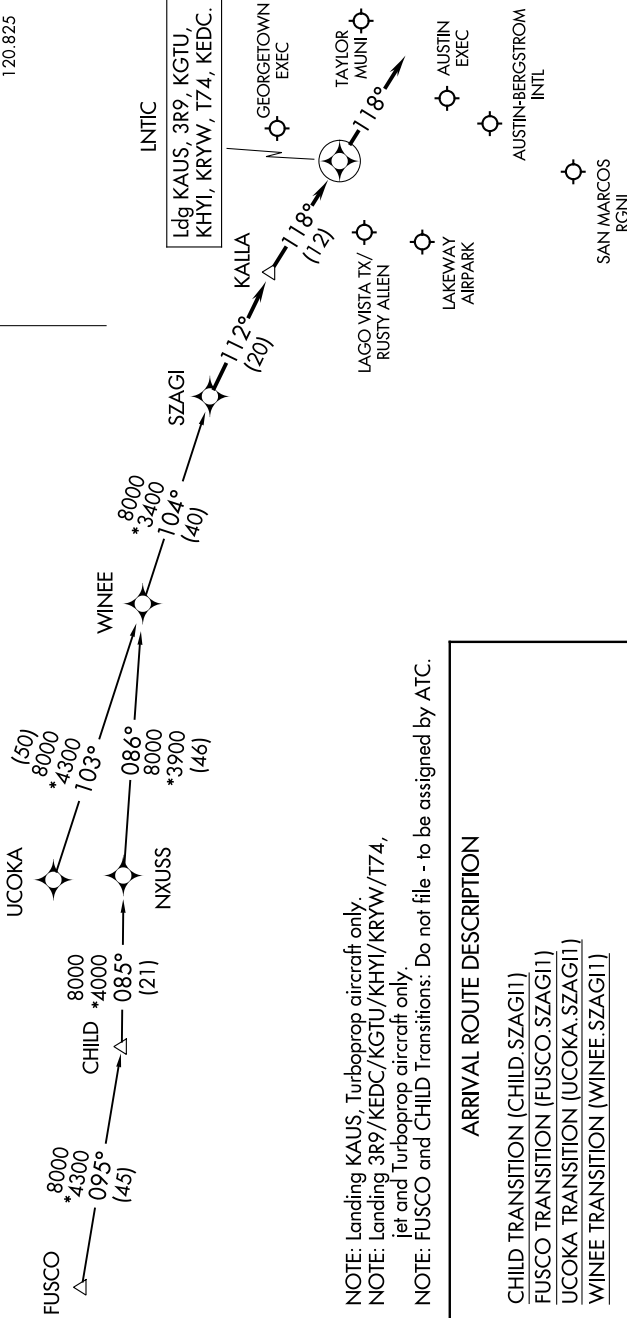
SZAGI ONE ARRIVAL (RNAV)

AUSTIN, TEXAS

SC-3, 26 DEC 2024 to 23 JAN 2025

RNAV 1 - DME/DME/IRU or GPS.
RADAR required.

AUSTIN APP CON
118.15 350.25 (SFC-7000)
119.0 370.85 (8000-12000)
AUS D-ATIS
124.4
GTU ATIS
118.6
HYI ATIS *
120.825



LINTIC
Ldg KAUS, 3R9, KGJTU,
KHYI, KRYW, T74, KEDC.

NOTE: Landing KAUS, Turboprop aircraft only.
NOTE: Landing 3R9/KEDC/KGJTU/KHYI/KRYW/T74,
jet and Turboprop aircraft only.
NOTE: FUSCO and CHILD Transitions: Do not file - to be assigned by ATC.

ARRIVAL ROUTE DESCRIPTION

CHILD TRANSITION (CHILD.SZAGI1)
FUSCO TRANSITION (FUSCO.SZAGI1)
UCOKA TRANSITION (UCOKA.SZAGI1)
WINEE TRANSITION (WINEE.SZAGI1)

LANDING ALL AIRPORTS: From SZAGI on track 112° to KALLA,
then on track 118° to LINTIC, then on track 118°.
Expect RADAR vectors to final approach course.

NOTE: Chart not to scale.

SZAGI ONE ARRIVAL (RNAV)

(SZAGI.SZAGI1) 05SEP24

AUSTIN, TEXAS

SC-3, 26 DEC 2024 to 23 JAN 2025