

APP CRS	Rwy Idg	<b>5898</b>
<b>229°</b>	TDZE	<b>13</b>
	Apt Elev	<b>13</b>

# RNAV (RNP) Z RWY 23

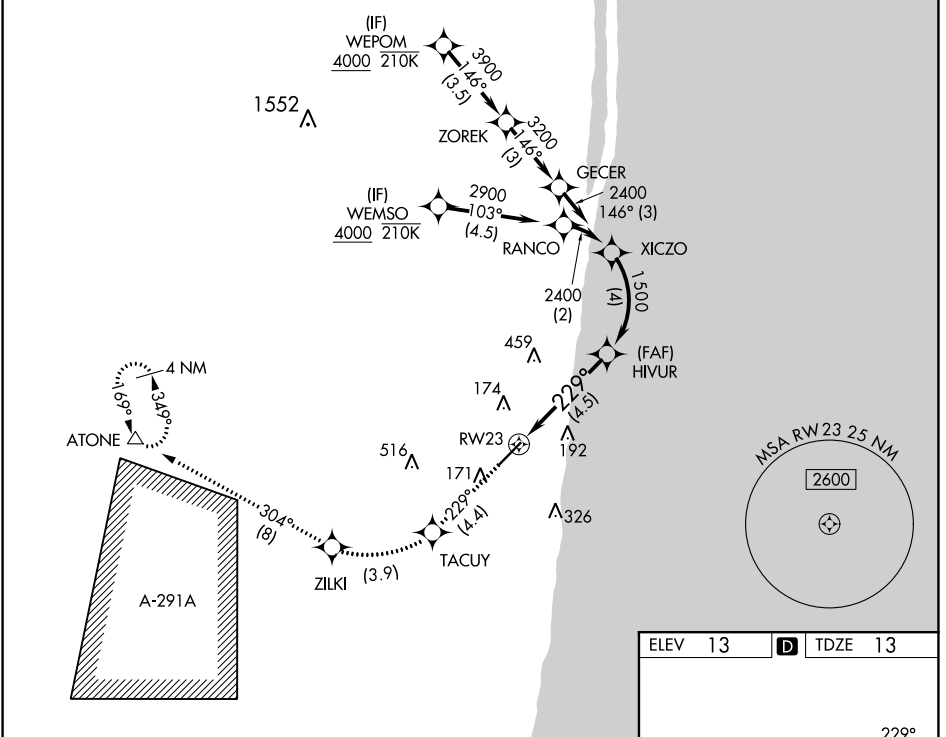
BOCA RATON (BCT)

RNP AR APCH. RF Required.

▼ For uncompensated Baro-VNAV systems, procedure NA below -15°C or above 54°C. In minimum visibility conditions, bright lights on highway ¼ mile north of airport may be mistaken for runway lights.

MISSED APPROACH: Climb to 2100 on track 229° to TACUY, right turn to ZILKI and track 304° to ATONE and hold.

AWOS-3	PALM BEACH APP CON	BOCA RATON TOWER ★	GND CON	CLNC DEL	GCO
<b>121.125</b>	<b>127.35 343.6</b>	<b>118.425 (CTAF) 0</b>	<b>121.8</b>	<b>121.8</b>	<b>127.35</b>

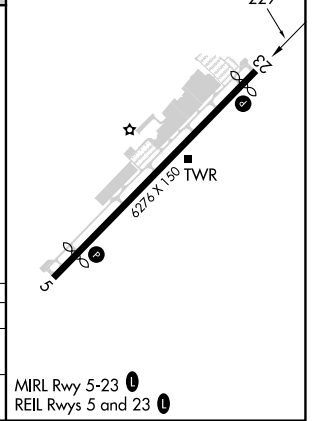


SE-3, 26 DEC 2024 to 23 JAN 2025

SE-3, 26 DEC 2024 to 23 JAN 2025

ELEV 13	<b>D</b> TDZE 13
---------	------------------

2100	TACUY	ZILKI	ATONE	See planview for multiple IF locations.
↑ tr 229°	↘	↘	△	
VGSI and RNAV glidepath not coincident (VGSI Angle 3.25/TCH 46).				
CATEGORY	A	B	C	D
RNP 0.30 DA	519-1 <sup>3</sup> / <sub>8</sub> 506 (600-1 <sup>3</sup> / <sub>8</sub> )			
<b>AUTHORIZATION REQUIRED</b>				



MIRL Rwy 5-23 0  
REIL Rws 5 and 23 0