

LOC/DME I-ARK 110.95 Chan 46(Y)	APP CRS 185°	Rwy Idg TDZE Apt Elev 9001 90 96
----------------------------------------------	------------------------	----------------------------------------------------------------------

ILS RWY 17L (SA CAT I)

ORLANDO INTL (MCO)

RNAV 1-DME/DME/IRU or GPS or RADAR required for procedure entry. DME or RADAR required.

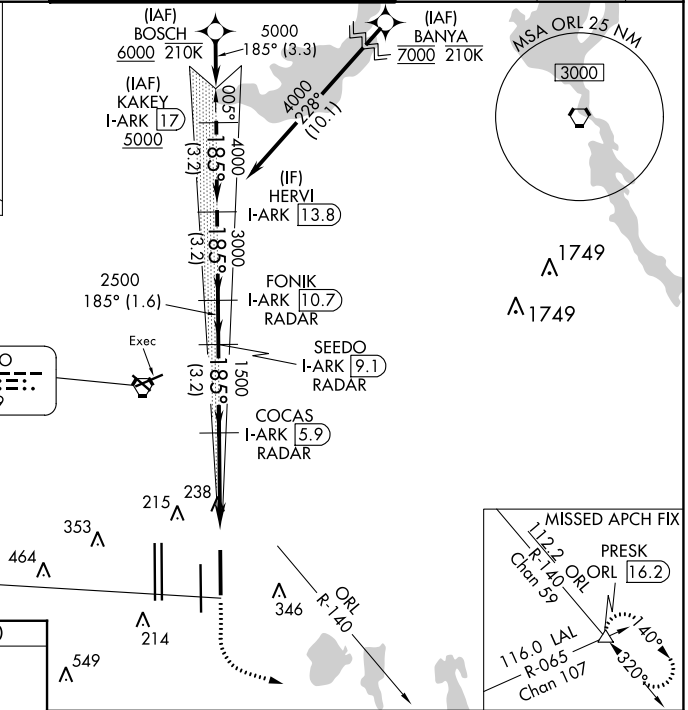
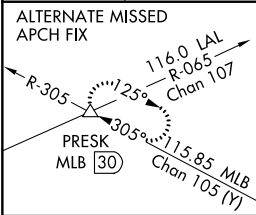
ALSF-2

MISSED APPROACH: Climb to 500 then climbing left turn to 3000 on heading 100° and ORL VORTAC R-140 to PRESK INT/ORL 16.2 DME and hold, continue climb-in-hold to 3000.

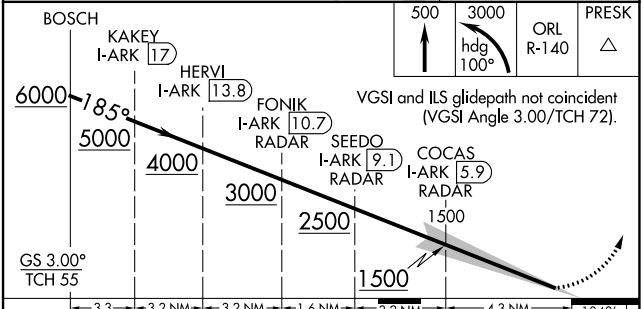
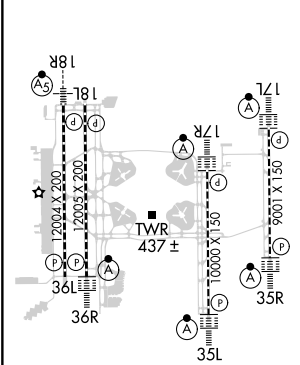
⚠ Bright lights on highway midway between Rwy 17L and Rwy 17R may be mistaken for runway lights. Simultaneous approach authorized. Requires specific OPSPEC, MSPEC, or LOA approval.



D-ATIS ARR 121.25 DEP 120.525	ORLANDO APP CON 124.8 307.0	ORLANDO TOWER 118.45 253.5 (Rwys 17L-35R, 17R-35L) 124.3 253.5 (Rwys 18L-36R, 18R-36L)	GND CON 126.4 (East) 121.8 (West)	CLNC DEL 134.7 341.7	CPDLC
---------------------------------------------------	---------------------------------------	------------------------------------------------------------------------------------------------------------	-------------------------------------------------------	------------------------------------------	-------



ELEV 96	D	TDZE 90
---------	---	---------



CATEGORY	A	B	C	D
S-ILS 17L	RA 145/14 150 DA 240			
SA CATEGORY I ILS - SPECIAL AIRCREW & AIRCRAFT CERTIFICATION REQUIRED				